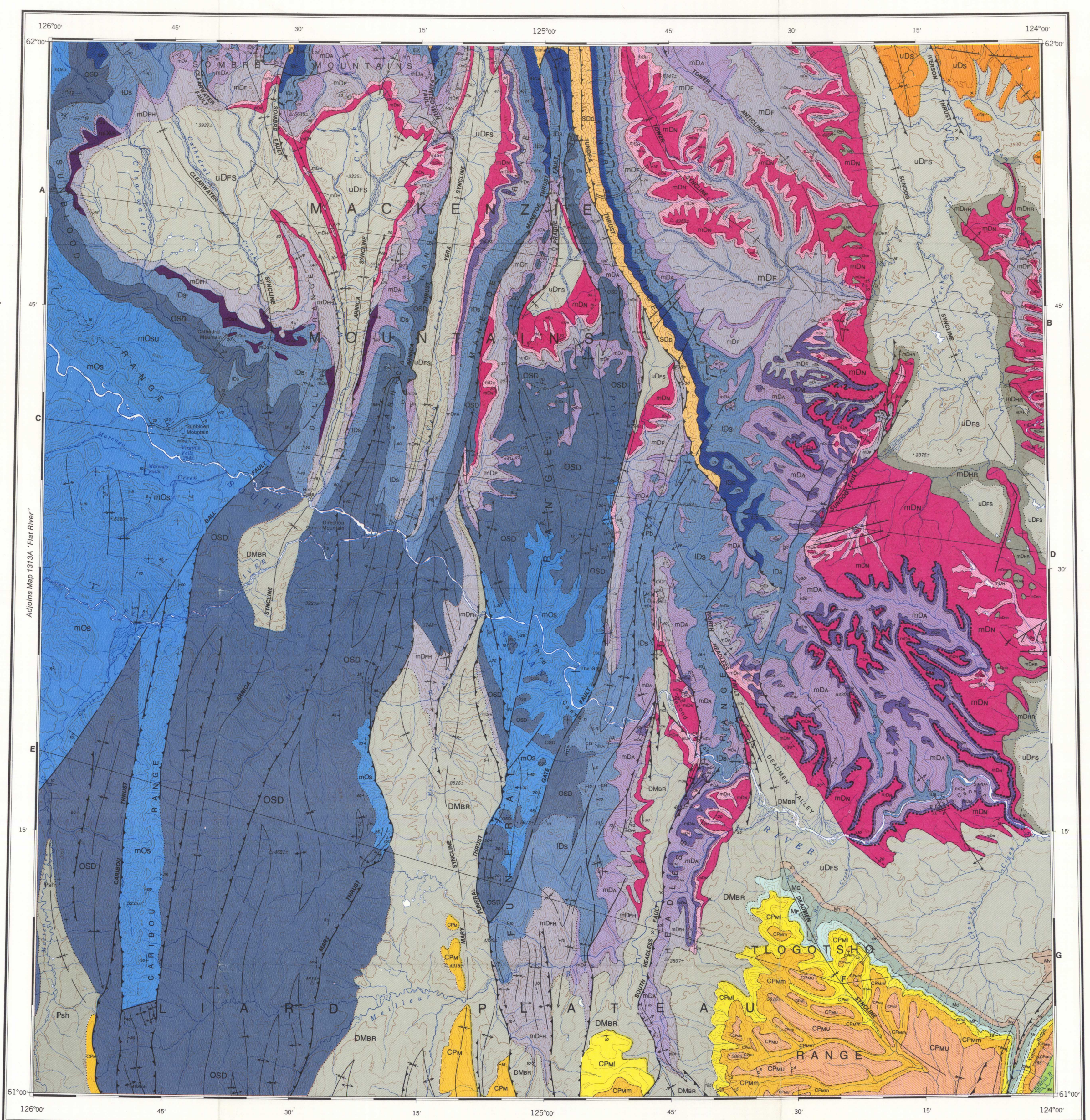


LEGEND

- MESOZOIC**
- CRETACEOUS LOWER CRETACEOUS**
 - IKg GARBUTT FORMATION: shale, grey rusty weathering
 - CARBONIFEROUS AND PERMIAN**
 - CPm MATTSON FORMATION: undivided
 - CPMu Upper part: grey sandstone, limestone, shale
 - CPMm Middle part: massive bedded, grey to brown sandstone
 - CPMl Lower part: thinly bedded grey sandstone; shale; coal
 - MISSISSIPPIAN**
 - Mf FLETT FORMATION: limestone, grey, fossiliferous, crinoidal and argillaceous; shale, grey
 - Mc CLAUSEN FORMATION: shale, black fissile
 - My YOHIN FORMATION: sandstone, thinly bedded; limestone, silty
 - DEVONIAN**
 - uDs Siltstone, calcareous; mudstone, silty
 - uDfs FORT SIMPSON FORMATION: shale, fissile, black; siltstone (may include undifferentiated HORN RIVER FORMATION)
 - MIDDLE DEVONIAN**
 - mDhr HORN RIVER FORMATION: shale, black, pyritic, fissile, brittle
 - mDn NAHANNI FORMATION: limestone, grey, finely crystalline, bioclastic, thickly bedded; shale, dolomite
 - mDh HEADLESS FORMATION: shale, dark grey, calcareous; limestone, argillaceous
 - mDm MANETOE FORMATION: dolomite, coarsely crystalline, vuggy, massive bedded
 - mDf FUNERAL FORMATION: shale, dark grey; limestone, argillaceous, thinly bedded (equivalent to ARNICA and MANETOE FORMATIONS)
 - mDa ARNICA FORMATION: dolomite, finely crystalline, black, banded dark and medium-grey weathering
 - mDg GRIZZLY BEAR FORMATION: dolomite, coarsely crystalline, vuggy, massive bedded
 - LOWER DEVONIAN**
 - lDs SOMERS FORMATION: dolomite, cryptocrystalline to fine-grained; grey, banded light and medium grey weathering; dark grey weathering band in middle indicated by heavy dashed line
 - lDc CAMSELL FORMATION: dolomite, silty and argillaceous, banded buff and grey weathering
 - SILURIAN AND LOWER DEVONIAN**
 - SDd DELORME FORMATION: dolomite, limestone and shale, grey, banded buff and brown weathering
 - UPPER ORDOVICIAN AND SILURIAN**
 - OSw WHITTAKER FORMATION: limestone, dark grey; dolomite, massive; shale grey (in structure section only)
 - ORDOVICIAN**
 - MIDDLE ORDOVICIAN**
 - OSd SUNBLOOD FORMATION: limestone, cryptocrystalline, grey, thinly bedded, orange and pink weathering; (may include younger and older beds in Caribou Range); mOs - upper part: limestone, dark grey; dolomite, massive; shale, grey weathering
 - ORDOVICIAN, SILURIAN AND DEVONIAN**
 - OSD Shale, grey, argillitic; thinly bedded limestone; includes basal coarse-grained sandstone in Funeral Range
 - PALEOZOIC**
 - Psh Shale
 - DEVONIAN AND MISSISSIPPIAN**
 - DMbr BESA RIVER FORMATION: shale, dark grey; siltstone



- Rock outcrop x
 Geological boundary (approximate, assumed) - - - - -
 Bedding, measured (horizontal, inclined, vertical) / / / / /
 Bedding, estimated (horizontal, inclined, vertical, overturned) / / / / /
 Bedding, determined photographically (inclined) / / / / /
 Fault - - - - -
 Transcurrent fault (dextral, sinistral) - - - - -
 Thrust, reverse fault (teeth on hanging wall) - - - - -
 Normal fault (hachures on hanging wall) - - - - -
 Anticline (arrow indicates plunge) - - - - -
 Syncline (arrow indicates plunge) - - - - -
 Location of measured section - - - - -
 Mineral prospect (galena) Pb x

Geology by W.B. Brady, R.J.W. Douglas, P. Harker, D.J. McLaren, A.W. Norris, D.K. Norris, B.R. Pelletier, 1967
 Compilation by R.J.W. Douglas and D.K. Norris, 1960, 1974

Geological cartography by H. Kovachic, Geological Survey of Canada

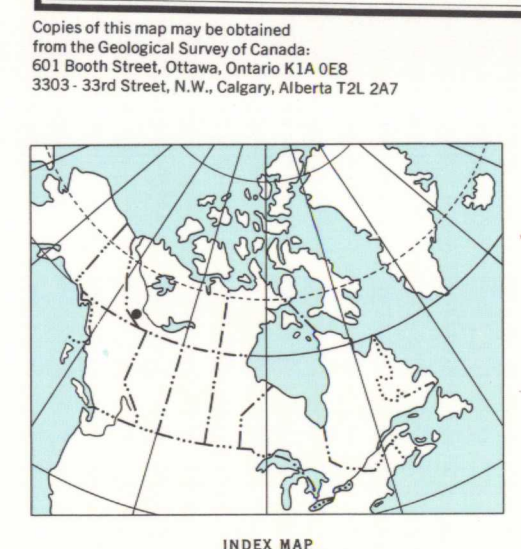
Any revision or additional geological information known to the user would be welcomed by the Geological Survey of Canada

Base-map at the same scale published by the Surveys and Mapping Branch, 1972

Copies of the topographical edition of this map may be obtained from the Canada Map Office, Department of Energy, Mines and Resources Ottawa

Magnetic declination 1975 varies from 33°29' easterly at centre of west edge to 33°29' easterly at centre of east edge. Mean annual change 0.5' westerly

Elevations in feet above mean sea-level



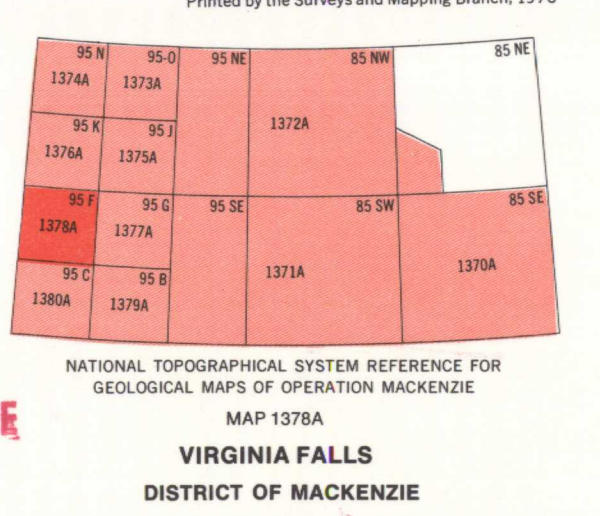
MAP 1378A
 GEOLOGY
VIRGINIA FALLS
 DISTRICT OF MACKENZIE
 Scale 1:250,000
 GEOLOGICAL SURVEY OF CANADA
 COMMISSION GÉOLOGIQUE

LIBRARY / BIBLIOTHÈQUE
 M 1077

6 Kilometres / 4 Miles

Universal Transverse Mercator Projection
 © Crown Copyrights reserved

NOT TO BE TAKEN FROM LIBRARY
 NE PAS SORTIR DE LA BIBLIOTHÈQUE



1378A