

LEGEND

- MISSISSIPPIAN ?
 - Msh Shale, grey, compact
- DEVONIAN
 - UPPER DEVONIAN
 - uDspc Siltstone and shale, green to reddish brown; limestone, argillaceous
 - uDsh Shale, green and grey
 - uDR TROUT RIVER FORMATION: sandstone, calcareous; siltstone, shale, olive grey
 - uDR REDKNIFE FORMATION: sandstone, siltstone and shale, olive grey
 - uDFs FORT SIMPSON FORMATION: shale and mudstone, grey; siltstone, grey (may include HORN RIVER FORMATION)
 - MIDDLE DEVONIAN
 - mDhr HORN RIVER FORMATION: shale, black, pyritic, sulphur stained
 - mDn NAHANNI FORMATION: limestone, fine to medium-grained, grey
 - mDh HEADLESS FORMATION: limestone, argillaceous; shale, calcareous
 - mDL LANDRY FORMATION: limestone, cryptocrystalline to medium-grained, grey (equivalent to mDn and part of mDf)
 - mDm MANETOE FORMATION: dolomite, coarsely crystalline, grey, porous (equivalent to mDL and part of mDf)
 - mDf FUNERAL FORMATION: limestone, argillaceous; shale grey (equivalent to mDL, mDm and part of mDA)
 - mDA ARNICA FORMATION: dolomite, crypto- to fine-grained, banded dark grey and black weathering
 - LOWER DEVONIAN
 - lDs SOMBRE FORMATION: dolomite, cryptocrystalline to fine-grained; banded grey and light grey weathering; dark grey weathering band in middle indicated by heavy dashed line
 - lDc CAMSELL FORMATION: massive breccia, cryptocrystalline limestone; banded buff and orange weathering limestone and dolomite
 - SILURIAN AND DEVONIAN
 - sDd DELORME FORMATION: dolomite, limestone, siltstone and shale, grey, banded buff and brown weathering
 - ORDOVICIAN AND SILURIAN
 - oSw WHITTAKER FORMATION: limestone, dark grey, dolomite, massive; shale, grey; grey weathering
 - ORDOVICIAN
 - oDs MIDDLE ORDOVICIAN
 - oDsb SUNBLOOD FORMATION: limestone, dark grey, dolomite, sandy; sandstone grey, orange and red weathering (may include older beds in Manetoe and Whittaker anticlines)
 - CAMBRIAN ?
 - cd Dolomite, buff and orange, locally sandy (extended from adjacent map-area)
 - HADRYNIAN
 - hR RAPITAN GROUP: mudstone, conglomerate; (in structure section only; extended from adjacent map-area)
 - HELIKIAN
 - hLd LITTLE DAL FORMATION: dolomite; (in structure section only; extended from adjacent map-area)
 - hT TIGONANKWEINE FORMATION: quartzite; (in structure section only; extended from adjacent map-area)

- Rock outcrop
- Geological boundary (approximate, assumed)
- Bedding, measured (horizontal, inclined, vertical)
- Bedding, estimated (horizontal, inclined, vertical)
- Bedding, determined photogrammetrically (inclined)
- Fault
- Transcurrent fault (dextral, sinistral)
- Thrust, reverse fault (teeth on hanging wall)
- Anticline (arrow indicates plunge)
- Syncline (arrow indicates plunge)
- Location of measured section
- Mineral prospect (copper)
- Well (abandoned)

Geology by W.B. Brady, R.J.W. Douglas, P. Harker, D.J. McLaren, A.W. Norris, D.K. Norris, B.R. Pelletier, 1957

Compilation by R.J.W. Douglas and D.K. Norris, 1960, 1974

Geological cartography by J.S. Yello, Geological Survey of Canada

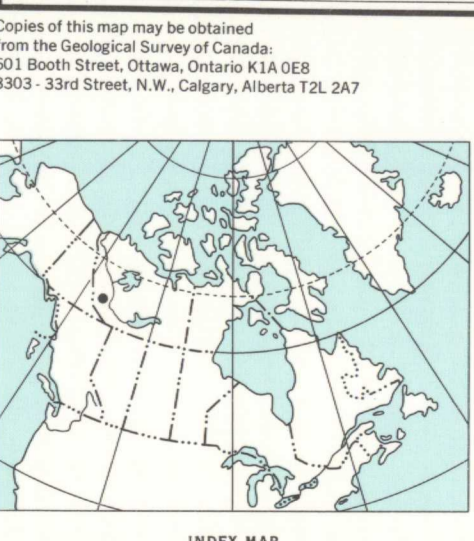
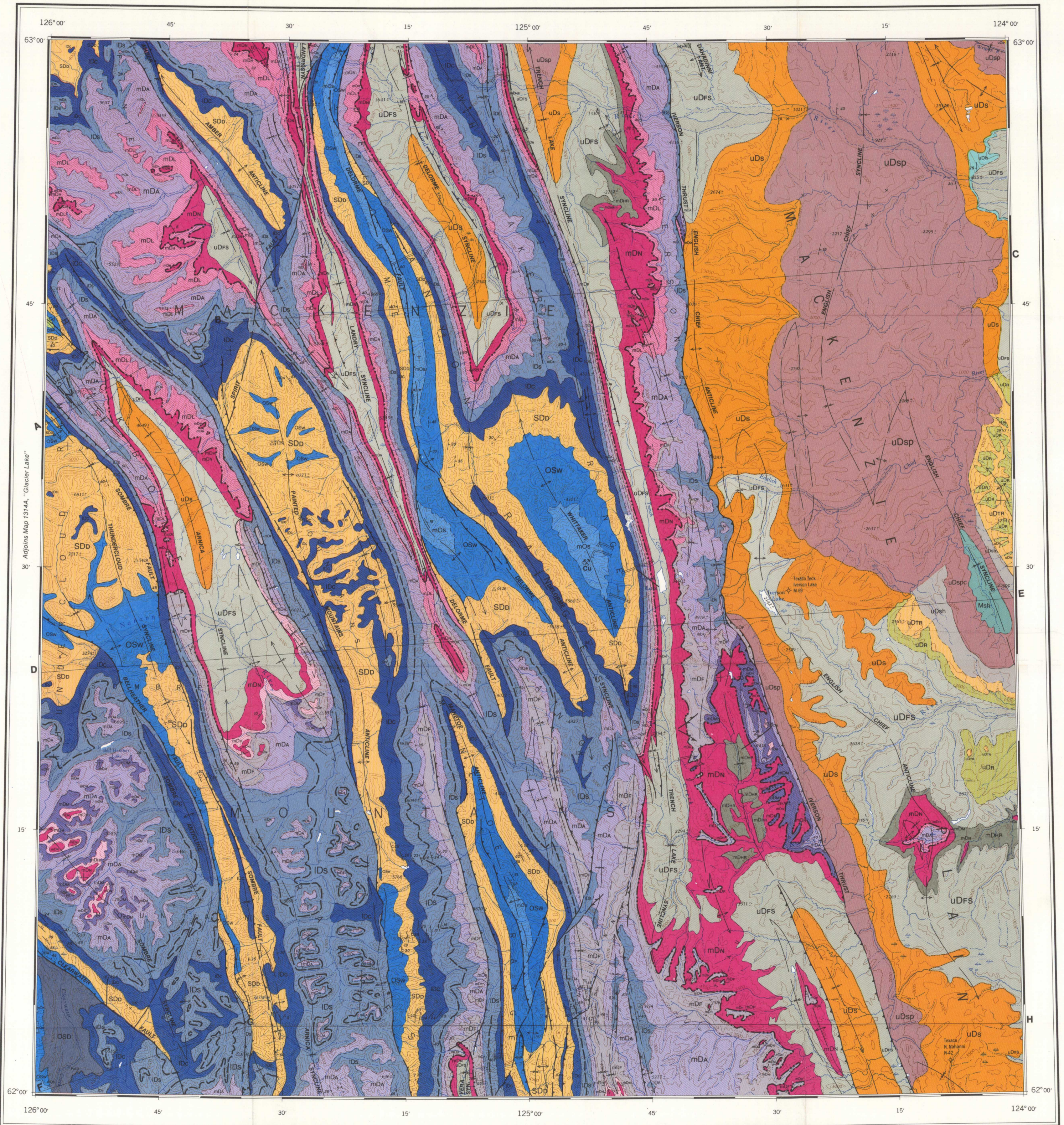
Any revisions or additional geological information known to the user would be welcomed by the Geological Survey of Canada

Base-map at the same scale published by the Army Survey Establishment in 1959

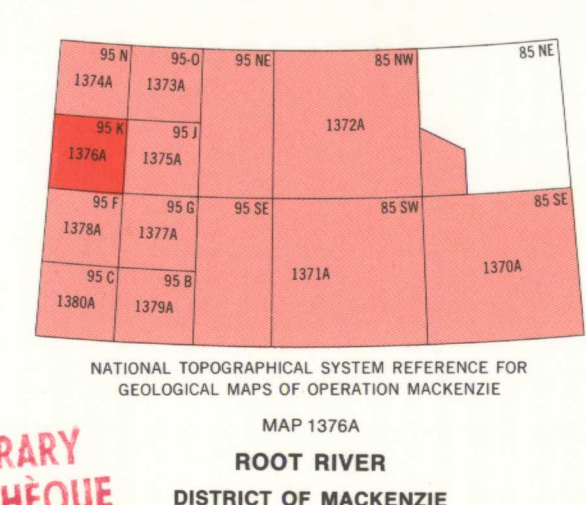
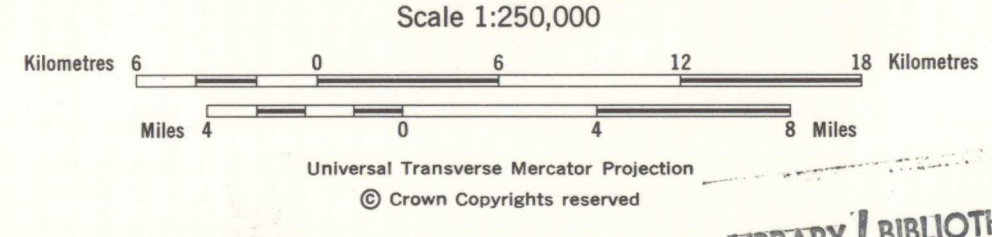
Copies of this map may be obtained from the Geological Survey of Canada, 601 Booth Street, Ottawa, Ontario K1A 0G8, 3903, 33rd Street, N.W., Calgary, Alberta T2L 2A7

Magnetic declination 1975 varies from 34°37' easterly at centre of west edge to 34°41' easterly at centre of east edge. Mean annual change 5' westerly

Elevations in feet above mean sea-level



MAP 1376A
GEOLOGY
ROOT RIVER
DISTRICT OF MACKENZIE
Scale 1:250,000



LIBRARY / BIBLIOTHÈQUE
MAR 21 1977
GEOLOGICAL SURVEY COMMISSION G.S.O./C.I.Q.

NOT TO BE TAKEN FROM LIBRARY
NE PAS SORTIR DE LA BIBLIOTHÈQUE

1376A