

LEGEND

Note: Legend blocks apply to Maps 1446A, 1447A and 1448A.  
Coloured legend blocks indicate map-units that appear on this map

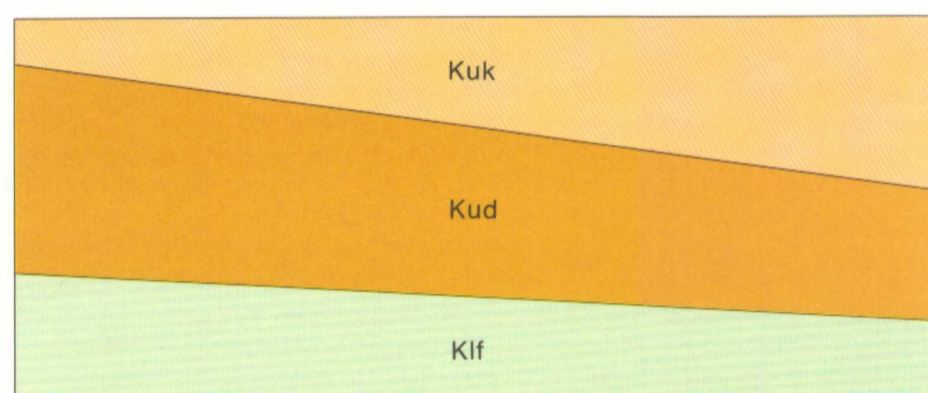
- MESOZOIC**
- CRETACEOUS**
- UPPER CRETACEOUS**
- Kuk** KASKAPAU FORMATION: dark grey to black marine shale, siltstone, siderite concretions
  - Kud** DUNVEGAN FORMATION: conglomerate and coarse- to fine-grained sandstone, carbonaceous shale
- LOWER CRETACEOUS**
- FORT ST. JOHN GROUP**
- Kif** Dark grey marine shale, tan to grey siltstone, calcareous sandstone, siderite concretions

Rock outcrop, area of outcrop .....  
Geological boundary (defined, approximate, assumed) .....  
Microfossil sample locality (G.S.C. catalogue number) ..... C-37275 x

Geology compiled by R.I. Thompson, 1974, 1975

To accompany G.S.C. Paper 75-11 by R.I. Thompson

SCHEMATIC STRATIGRAPHIC RELATIONSHIPS



Geological cartography by B.H. Ortman, Institute of Sedimentary and Petroleum Geology, Geological Survey of Canada

Any revisions or additional geological information known to the user would be welcomed by the Geological Survey of Canada

Base map at the same scale published by Surveys and Mapping Branch, 1963

Copies of the topographical edition of this map may be obtained from the Canada Map Office, 615 Booth Street, Ottawa, Ontario K1A 0E9

Magnetic declination 1976 varies from 28°53.4' easterly at centre of west edge to 28°40.0' easterly at centre of east edge. Mean annual change 5.25' westerly

Elevations in feet above mean sea-level

94J	94I	84L
3-1968	1447A	
94G	94H	84E
12-1963	1446A	
94B	94A	84D
1232A	17-1958	

NATIONAL TOPOGRAPHIC SYSTEM REFERENCE AND INDEX TO ADJOINING GEOLOGICAL SURVEY OF CANADA MAPS



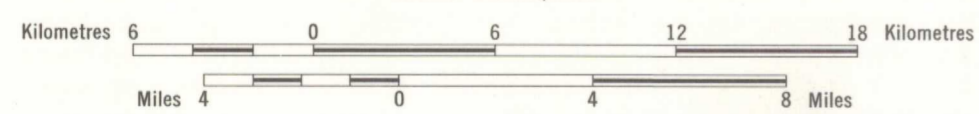
INDEX MAP

MAP 1446A  
PAPER 75-11  
GEOLOGY

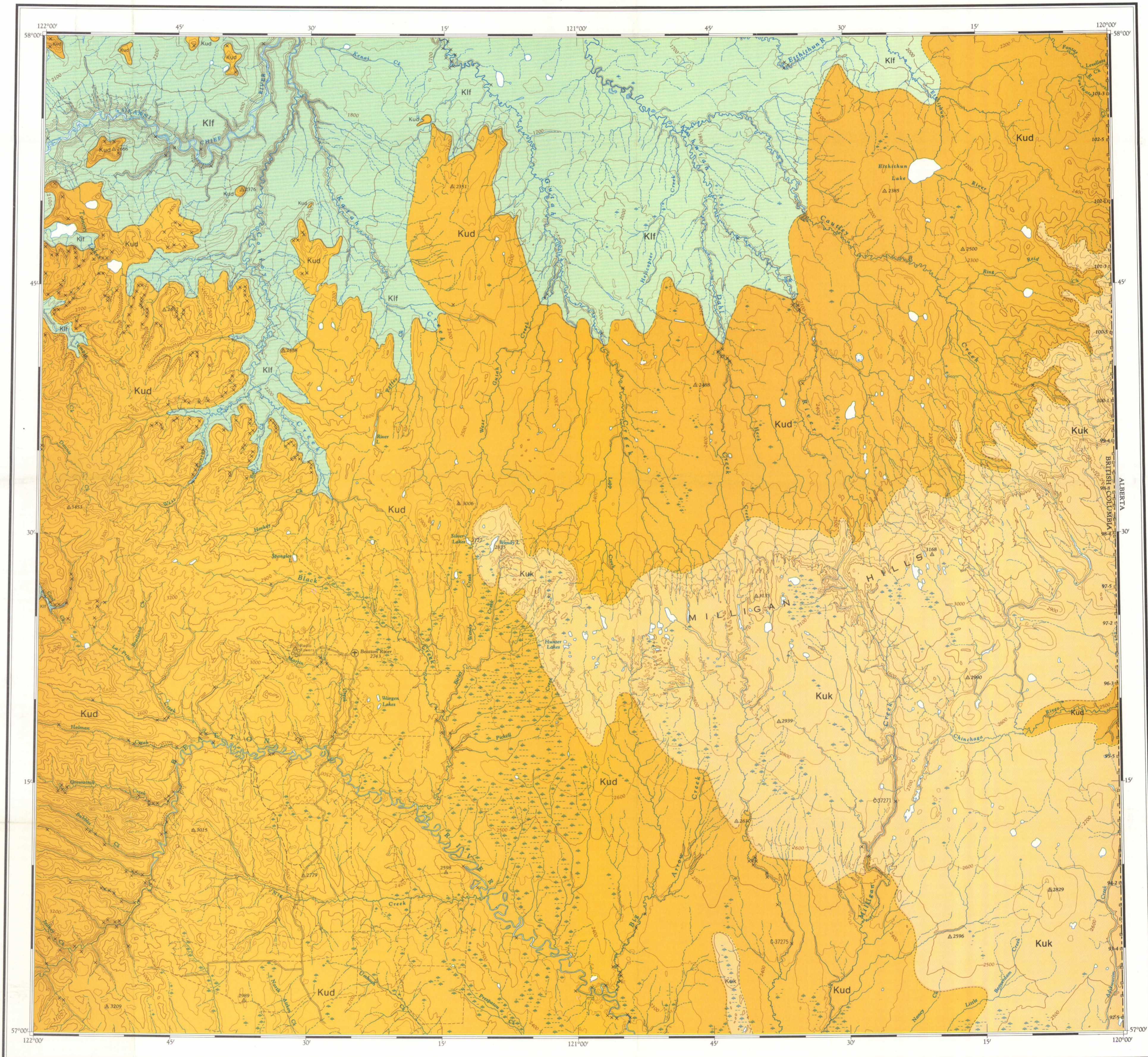
**BEATTON RIVER**

WEST OF SIXTH MERIDIAN  
BRITISH COLUMBIA

Scale 1:250,000



Transverse Mercator Projection  
© Crown Copyrights reserved



Copies of this map may be obtained from the Geological Survey of Canada, 601 Booth Street, Ottawa, Ontario K1A 0E8 or 1300 - 90 Street N.W., Calgary, Alberta T2L 2A7

Printed by the Surveys and Mapping Branch, 1976

LIBRARY / BIBLIOTHÈQUE

OCT 21 1988

GEOLOGICAL SURVEY  
COMMISSION GÉOLOGIQUE

MAP LIBRARY / CARTOTHEQUE

NOT TO BE TAKEN FROM LIBRARY  
NE PAS SORTIR DE LA BIBLIOTHÈQUE

1446A

MAP 1446A  
BEATTON RIVER  
BRITISH COLUMBIA

