



GEOLOGICAL SURVEY OF CANADA  
DEPARTMENT OF ENERGY, MINES AND RESOURCES

LEGEND AND DESCRIPTION OF TERRAIN UNITS

Table with columns: Symbol, Name, Material, Thickness, Topography, Slopes, Comments. Lists various terrain units like talus, rock glacier, colluvial blanket, lacustrine plain, alluvial fan, etc.

Explanation of letter notation

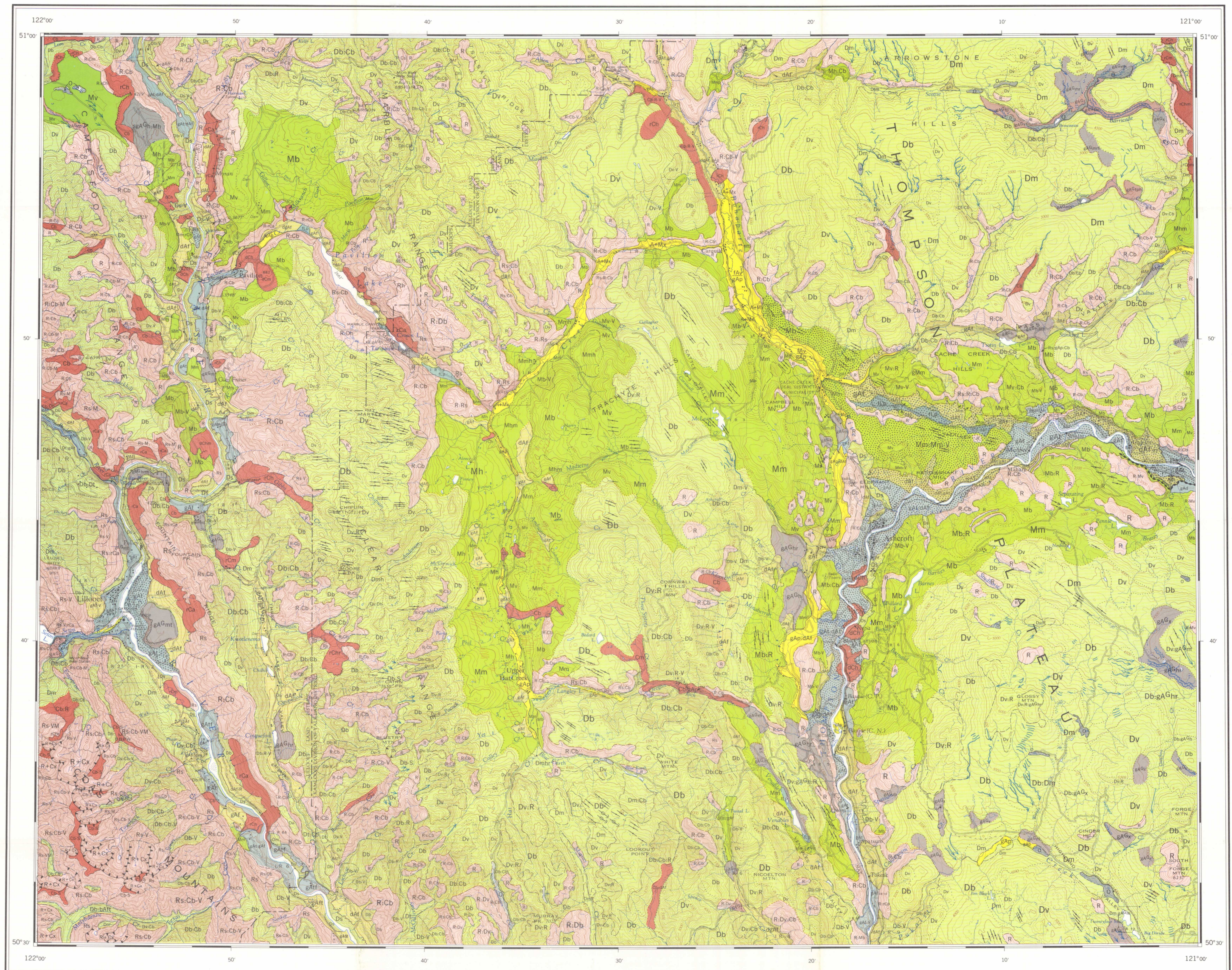
A combination of letters is used to designate each map unit or component of compound map units e.g. dA1. The upper case letter indicates the broad compositional-genetic class. The lower case letter(s) that generally follow indicate morphology. The lower case letter(s) in front of the central upper case letter describes the texture. This specific texture term is used where it is possible to specify the texture more precisely than is indicated by the compositional-genetic term.

In certain cases the letter designation ends with an upper case letter(s) that is separated from the other letters by a dash e.g. Mb-V. This final letter indicates that the area has been modified or eroded in a specific way.

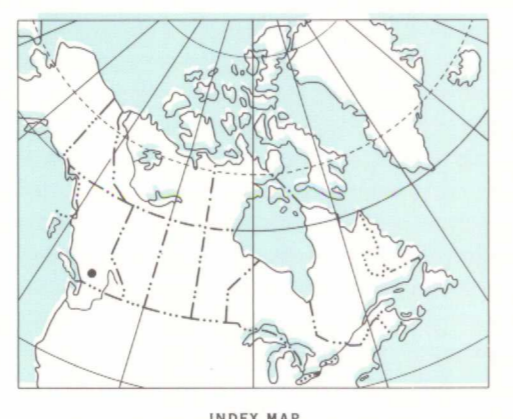
Some map units are designated by more than one group of letters separated by a colon. These areas consist of more than one component that could not be separated at the scale of mapping. The term in front of the colon refers to the dominant component. One term placed above another e.g. Mb/AM indicates a stratigraphic succession within the unit. Compound units are coloured according to the dominant component.

Table with columns: Texture, Compositional-genetic class, Morphologic subdivision, Erosional Modifiers. Lists symbols for boudlery, gravely, sandy, etc.

Table with columns: Geological boundary, Glacial lake strandline, Sand dunes, Veneer of eolian sand and silt, Meltwater channel, Landslide scar, Major terrace scarp, Gravel pits (active). Lists symbols for various geological features.



Copies of this map may be obtained from the Geological Survey of Canada, 601 Booth Street, Ottawa, Ontario K1A 0E8, 3303 - 33rd Street N.W., Calgary, Alberta T2L 2A7

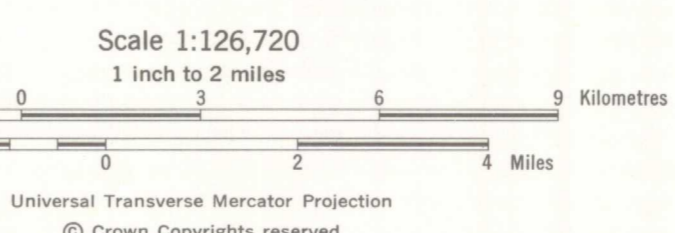


Geology by J.M. Ryder 1972  
To accompany Paper 74-49 by J.M. Ryder

Geological cartography by H.A. Thomson, Geological Survey of Canada  
Any revision or additional geological information known to the user would be welcomed by the Geological Survey of Canada

Elevation in feet above mean sea level

MAP 1405A  
PAPER 74-49  
SURFICIAL GEOLOGY  
ASHCROFT  
BRITISH COLUMBIA



Base map modified by the Geological Survey of Canada from map published at the same scale by the Department of Lands, Forests and Water Resources, British Columbia

Copies of the topographical edition of this map may be obtained from Geographic Division, Surveys and Mapping Branch, Department of Lands, Forests and Water Resources, Victoria, B.C.

Approximate magnetic declination 1975, 23°24.5' East, decreasing 3.0" annually

Table with columns: 92 O/E, 92 P/SW, 92 P/SE, 92 J/NE, 1405A, 1394A, 92 J/SE, 92 I/SW, 92 I/SE, 1393A. Grid coordinates for the map area.

NATIONAL TOPOGRAPHIC SYSTEM OF CANADA AND INDEX TO GEOLOGICAL SURVEY OF CANADA MAPS  
MAP 1405A  
ASHCROFT  
BRITISH COLUMBIA

NOT TO BE TAKEN FROM LIBRARY  
NE PAS SORTIR DE LA BIBLIOTHÈQUE  
1405A