



GEOLOGICAL SURVEY OF CANADA
DEPARTMENT OF ENERGY, MINES AND RESOURCES

LEGEND

Note: Legend blocks apply to Maps 1408A, 1409A, and 1410A.
Coloured legend blocks indicate map-units that appear on this map

- CENOZOIC**
- QUATERNARY**
 - Qa** Alluvium, largely sand
- MESOZOIC**
- CRETACEOUS**
 - K** Cretaceous undivided: sandstone, white, fine- to coarse-grained, commonly basal; shale, black, fissile; shale, brown with ironstone concretions; sandstone, brown, laminated, partly fossiliferous
- DEVONIAN**
- UPPER DEVONIAN**
 - Di2** IMPERIAL FORMATION: shale, brown, greenish grey, generally fissile; subordinate sandstone, brown, impure, very fine grained; minor siltstone
 - Di1** Basal unit: shale, dark brown to black, fissile, with siltstone laminae and clay ironstone concretions
 - Di** IMPERIAL FORMATION (undivided)
 - MIDDLE DEVONIAN**
 - Dc** CANOL FORMATION: shale, black, mostly bituminous, partly fissile, partly siliceous and blocky
 - D4** Unnamed unit (approximate, assumed): sandstone, brown, fine-grained, thin- to medium-bedded, partly shaly, partly calcareous, commonly fossiliferous
 - Dr** RAMPARTS FORMATION: limestone, generally well bedded and partly argillaceous, rubbly weathering, commonly fossiliferous; massive in Iroquois Syncline (see Map 1410A)
 - Dhi** HARE INDIAN FORMATION: shale, black and fissile at base, greenish grey above; beds of siltstone and fossiliferous limestone locally developed especially near top
 - Dh** HUME FORMATION: limestone, well bedded and rubbly, highly fossiliferous; shales in middle and lower parts

- Rock outcrop
- Rock outcrop visited
- Geological boundary (approximate, assumed)
- Geological boundary (extended beneath thick overburden)
- Bedding, tops known (inclined)
- Fossil locality G.S.C. catalogue number
- Stratigraphic section studied by W. S. MacKenzie with section number
- Shallow borehole samples examined (surface map-unit)
- Gas seep (reported)
- Oil seep (reported)
- Abandoned well

Geology compiled by D. G. Cook and J. D. Aitken, 1974. Compilation based on field work by D. G. Cook, J. D. Aitken, M. E. Ayling, H. R. Balkwill, W. S. MacKenzie and C. J. Yorath (1968, 1971), published maps and reports, and unpublished reports on file with the Department of Indian Affairs and Northern Development

To accompany G.S.C. Paper 74-17 by D. G. Cook and J. D. Aitken

ABANDONED WELLS

- Decalta Trans Ocean GCOA Ontaratie 1-38
- Atlantic Circle River No. 1
- Atlantic et al. Ontaratie K-4
- Candei et al. Mobil Grandview L-26

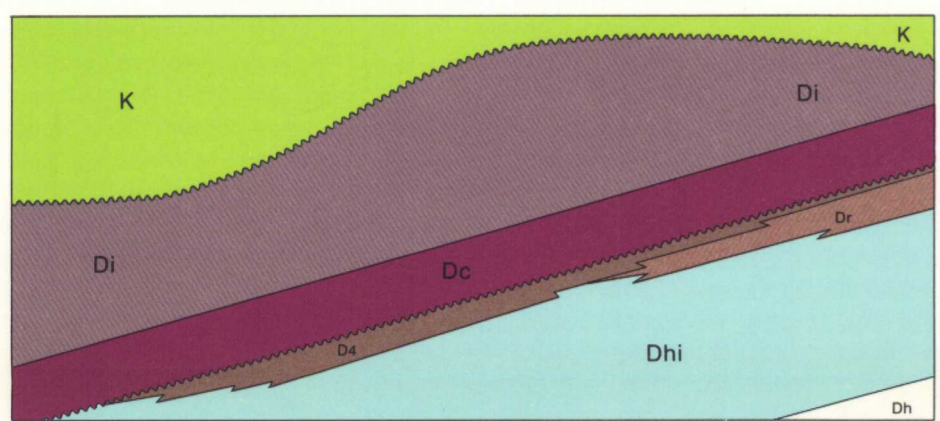
SHALLOW BOREHOLE SAMPLES

- Western Decalta Petroleum Ltd. - seismic shot points
- Sun Oil Co. - seismic shot points

REPORTED OIL OR GAS SEEPS

- DIAND Report No. 246-1-6-3
- DIAND Report Nos. 530-1-6-8, 246-1-6-6, 246-1-6-4, 530-1-6-1
- DIAND Report No. 246-1-6-3

SCHEMATIC STRATIGRAPHIC RELATIONSHIPS



Geological cartography by D.J. Walter, Institute of Sedimentary and Petroleum Geology, Geological Survey of Canada

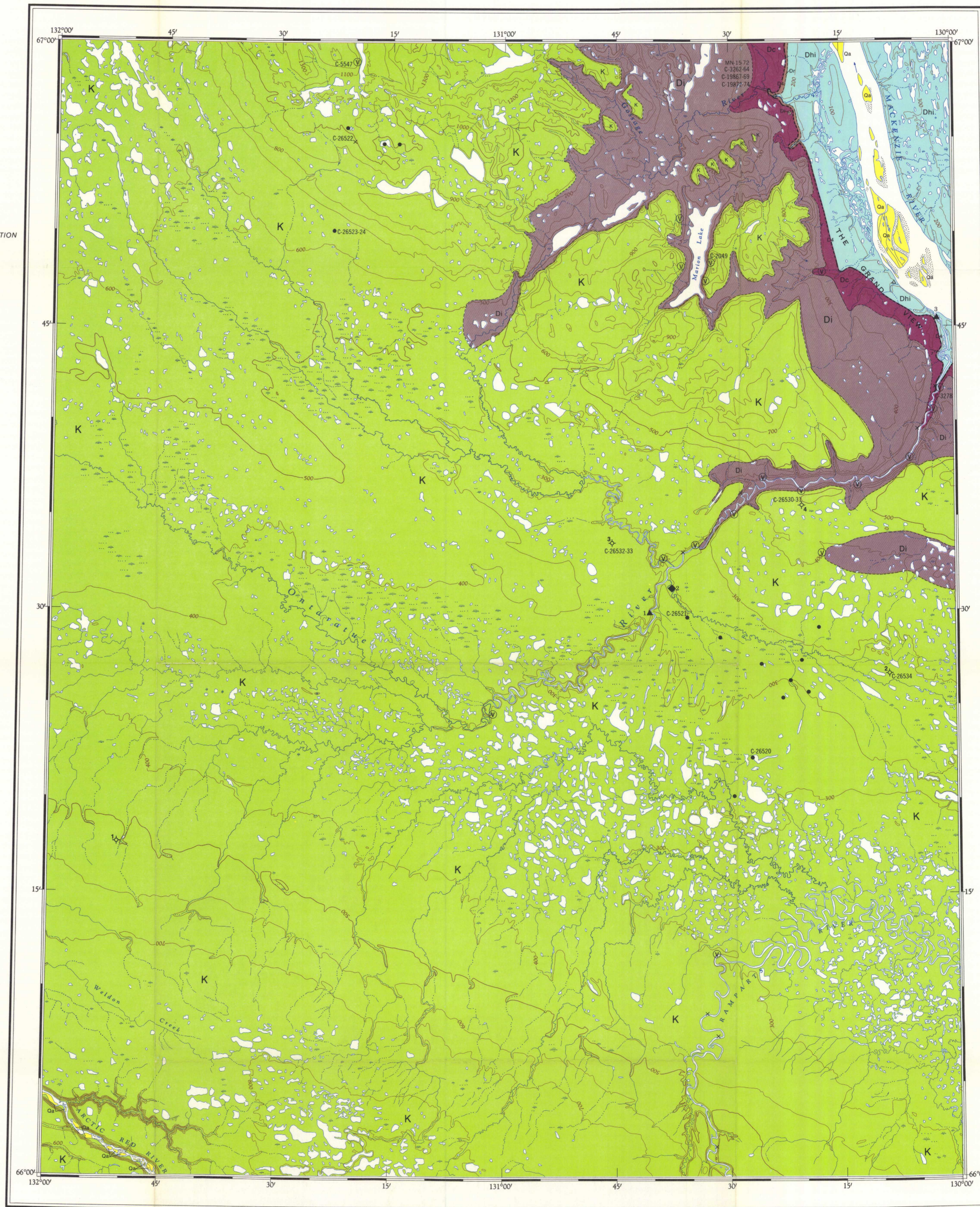
Any revisions or additional geological information known to the user would be welcomed by the Geological Survey of Canada

Base-map at the same scale published by the Surveys and Mapping Branch in 1959

Copies of the topographical edition of this map may be obtained from the Canada Map Office, 615 Booth Street, Ottawa, Ontario K1A 0E9

Magnetic declination 1975 varies from 37°25.4' easterly at centre of west edge to 38° 0.4' easterly at centre of east edge. Mean annual change 6.0' westerly

Elevations in feet above mean sea-level



Copies of this map may be obtained from the Geological Survey of Canada: 601 Booth Street, Ottawa, Ontario K1A 0E8 3303 - 33rd Street N.W., Calgary, Alberta T2N 2A7

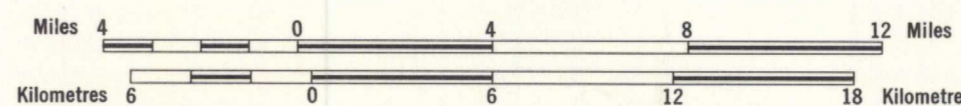


INDEX MAP

MAP 1408A
PAPER 74-17
GEOLOGY

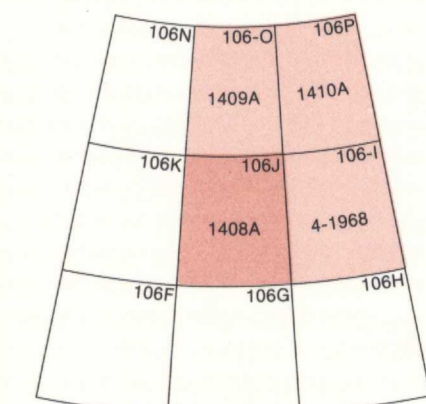
ONTARATUE RIVER
DISTRICT OF MACKENZIE

Scale 1:250,000



Transverse Mercator Projection
© Crown Copyrights reserved

Printed by the Surveys and Mapping Branch, 1975



NATIONAL TOPOGRAPHIC SYSTEM REFERENCE AND INDEX TO ADJOINING GEOLOGICAL SURVEY OF CANADA MAPS

MAP 1408A
ONTARATUE RIVER
DISTRICT OF MACKENZIE

1408A

LIBRARY / BIBLIOTHÈQUE
OCT 21 1988
GEOLOGICAL SURVEY
COMMISSION GÉOLOGIQUE

MAP LIBRARY / CARTOTHEQUE

NOT TO BE TAKEN FROM LIBRARY
NE PAS SORTIR DE LA BIBLIOTHÈQUE