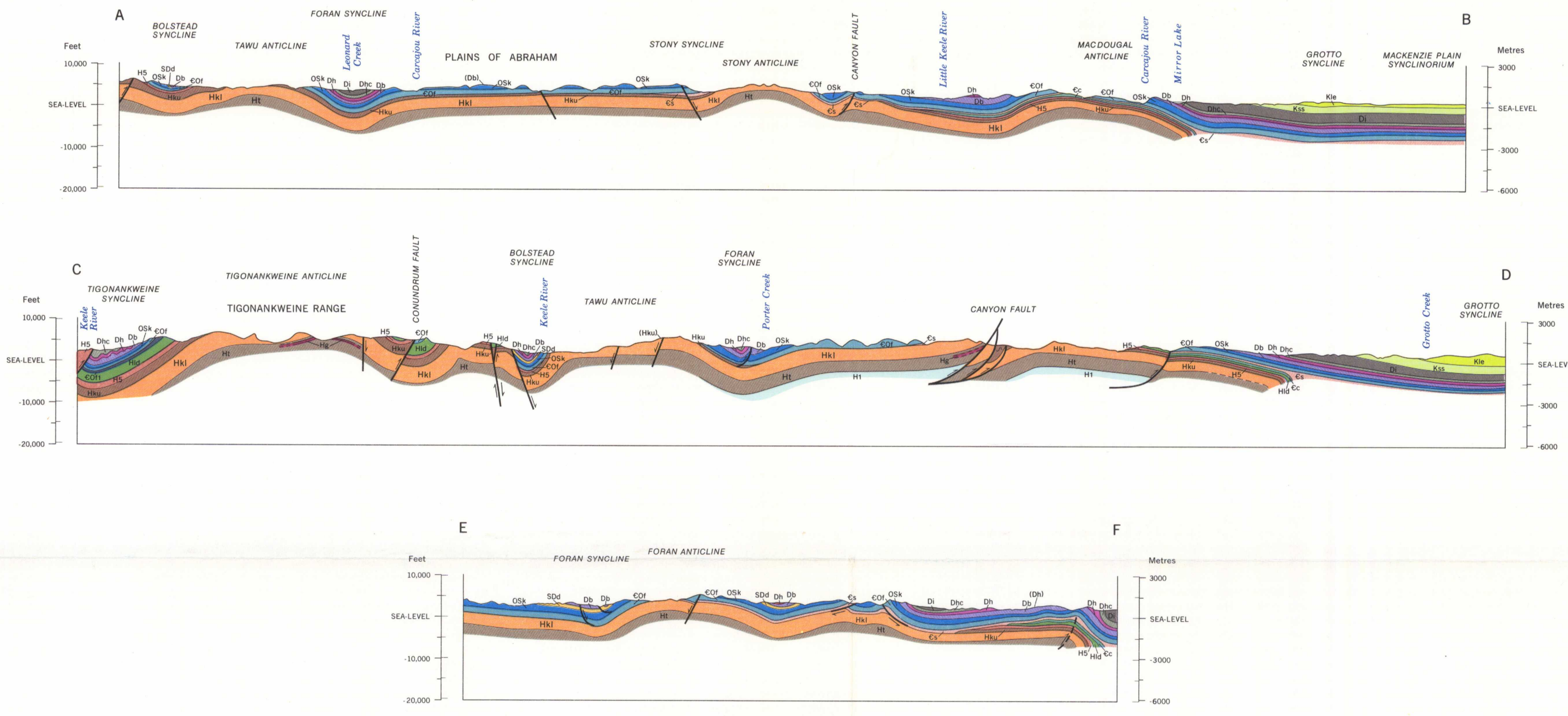


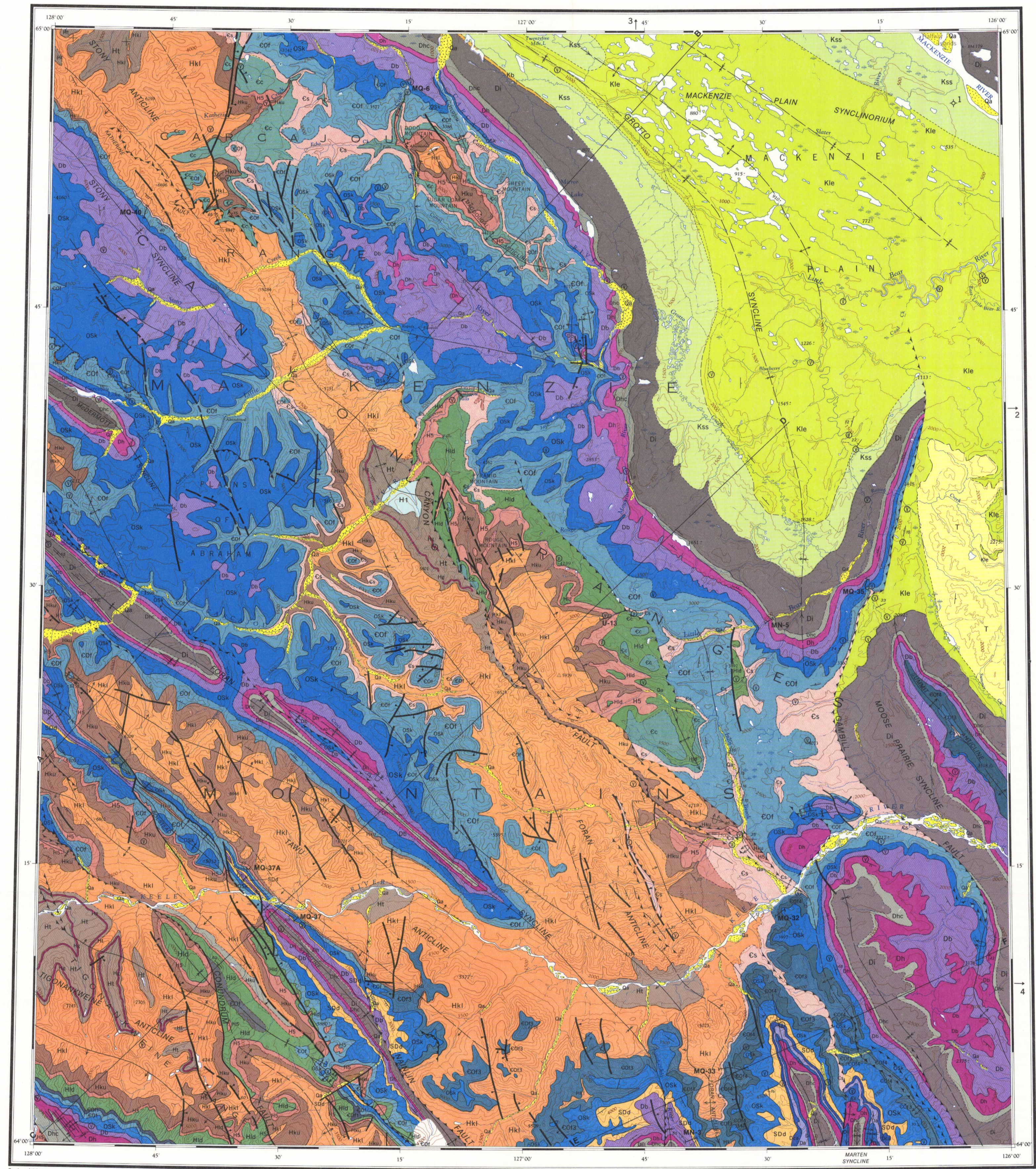
LEGEND

Note: Coloured legend blocks indicate map-units that appear on this map

CENOZOIC	QUATERNARY	Qa	Alluvium, largely gravel	
	TERTIARY	Eocene (?)	T	Gravel, conglomerate, sand, sandstone; minor coal and volcanic ash or tuff; nonmarine
MESOZOIC	CRETACEOUS	UPPER CRETACEOUS	Kle	LITTLE BEAR AND EAST FORK FORMATIONS, undifferentiated: sandstone, shale, minor coal; marine and nonmarine
	LOWER AND UPPER (?) CRETACEOUS	Kss, Kb	SANS SAULT AND SLATER RIVER FORMATIONS, undifferentiated: shale, sandstone; marine; Kb, basal sandstone and conglomerate	
	DEVONIAN	UPPER DEVONIAN	Di	IMPERIAL FORMATION: shale, sandstone, minor limestone; marine
	MIDDLE DEVONIAN	Dc	CANOL FORMATION: shale, black, siliceous, bituminous; marine	
PALEOZOIC	DEVONIAN	MIDDLE AND UPPER DEVONIAN	Dhc	HARE INDIAN AND CANOL FORMATIONS and basal IMPERIAL shales, undifferentiated
	LOWER DEVONIAN	Dh	HUME FORMATION: limestone, fossiliferous; minor shale; marine	
	LOWER DEVONIAN	Di	LANDRY FORMATION: limestone, thick-bedded, resistant; marine	
	LOWER DEVONIAN	Da	ARVICA FORMATION: dolomite, brown, striped; minor solution breccia; marine	
	LOWER DEVONIAN	Dca	CAMSELL FORMATION: limestone, massive, resistant; limestone breccia; marine	
	SILURIAN AND DEVONIAN	UPPER SILURIAN AND LOWER DEVONIAN	Sd	DELORME FORMATION: dolomite, partly sandy, silty, argillaceous; marine
	ORDOVICIAN AND SILURIAN	UPPER ORDOVICIAN AND LOWER SILURIAN	OSK	MOUNT KINDLE FORMATION: dolomite, fossiliferous, siliceous; minor chert; marine
	CAMBRIAN AND ORDOVICIAN	UPPER CAMBRIAN AND LOWER ORDOVICIAN	CO1	"Cherty" member: dolomite, chert, drusy quartz; marine
	CAMBRIAN AND ORDOVICIAN	UPPER CAMBRIAN AND LOWER ORDOVICIAN	CO3	"Rhythmic" member: alternation of very finely crystalline dolomite with finely to medium crystalline dolomite; marine; includes "cyclic" member where present
	CAMBRIAN AND ORDOVICIAN	UPPER CAMBRIAN AND LOWER ORDOVICIAN	CO2	"Cyclic" member: dolomite, conglomeratic, stromatolitic, and argillaceous, shaly; marine
CAMBRIAN	UPPER CAMBRIAN	Cs	SALINE RIVER FORMATION: red beds; shale, siltstone, sandstone; salt, anhydrite, gypsum, dolomite; marine	
CAMBRIAN	LOWER AND MIDDLE CAMBRIAN	Cc	MOUNT CAP FORMATION: shale, thin-bedded limestone, sandstone, siltstone; marine	
PROTEROZOIC	HELIKIAN (?)	Hg	Gabbro, greenish black, medium grained	
	LITTLE DAL FORMATION	Hid	dolomite and limestone, partly sandy, silty, and argillaceous; minor shale; marine	
	H5	Unnamed unit: shale, partly red, nodular; limestone, dolomite; marine		
	KATHERINE GROUP	Hku, Hki	Hku, Upper division: quartzite, dolomite, shale; marine and (?) nonmarine. Hki, Lower division: mainly quartzite; minor shale and dolomite; marine and (?) nonmarine	
	TSEZOTENE FORMATION	Ht	shale, sandstone, dolomite, local limestone; marine; gabbro sills	
H1	Unnamed unit: dolomite, minor chert; marine			



Diagrammatic structure sections along lines A-B, C-D, E-F



Geological boundary (defined, approximate, assumed)	—
Photogeological strike and dip (0°-15°, 15°-45°, 45°-90°)	—
Fault, normal (defined, approximate, assumed; solid circles on downthrown side)	—
Fault, sense of displacement unknown (defined, approximate or assumed)	—
Fault, thrust or reverse (defined, approximate or assumed; teeth on upthrust side)	—
Syncline, trace of axial plane (defined, approximate; arrow indicates plunge)	—
Monoclinical bend, anticline, trace of hinge plane (defined, approximate; arrow on steeper limb)	—
Monoclinical bend, syncline, trace of hinge plane (defined, approximate; arrow on steeper limb)	—
Overturned fold (anticline, syncline)	—
Ground observation (mapping station)	—
Exploratory well	—
Stratigraphic section, locus of measurement (numbers refer to internal cataloguing system) studied by: W.S. MacKenzie, MN; R.W. MacQueen, MQ; J.L. Usher, U	—
Line of section	—

Geological compilation by J.D. Aitken, D.G. Cook, H.R. Belkwill, and C.J. Yorath (1973); based on studies of vertical aerial photographs and air and ground observations by J.D. Aitken, H.R. Belkwill, D.G. Cook, W.S. MacKenzie, R.W. MacQueen, J.L. Usher, and C.J. Yorath (1969, 1970), and geologists of the Canol Project (1944)

To accompany G.S.C. Paper 74-13 by J.D. Aitken and D.G. Cook

- NOTES**
- Mobil et al. Slater River A-37 1
 - Candex Amoco Shell Little Bear 1-70; 1.74 miles (2.9 km) due east 2
 - Aquit. Mobil Amoco Hess Dodo Canyon K-03; 2.90 miles (4.67 km) due north 3
 - Amoco Candex Shell A-1 Red Dog K-29; 13.6 miles (21.88 km) due east 4

Geological cartography by the Institute of Sedimentary and Petroleum Geology, Geological Survey of Canada, 1974

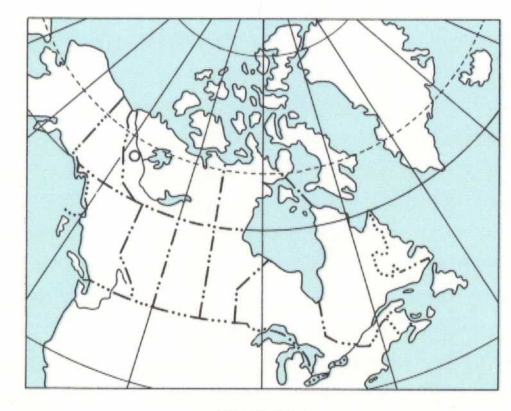
Any revisions or additional geological information known to the user would be welcomed by the Geological Survey of Canada

Base-map at the same scale published by Army Survey Establishment, R.C.E. in 1959-1961 sand and gravel were revised by the Institute of Sedimentary and Petroleum Geology.

Copies of the topographical edition of this map may be obtained from the Canada Map Office, 615 Booth Street, Ottawa, Ontario, K1A 0E9

Mean magnetic declination 1974, 36° 26.7' East, decreasing 6.1' annually

Elevations in feet above mean sea-level

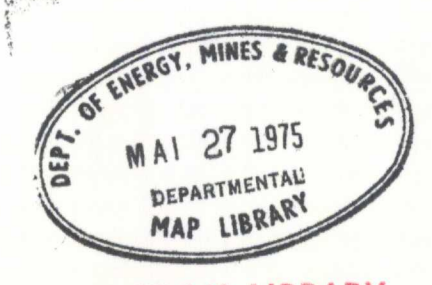


MAP 1390A
Paper 74-13
GEOLOGY
CARCAJOU CANYON
DISTRICT OF MACKENZIE

Scale 1:250,000

Miles 4 0 4 8 12 Miles
Kilometres 6 0 6 12 18 Kilometres

Universal Transverse Mercator Projection
© Crown Copyrights reserved



106H	96E	96F
106A	96D	96C
MAP 1390A		
106P	95M	95N
1333A	1315A	44-1962

NATIONAL TOPOGRAPHIC SYSTEM REFERENCE AND INDEX TO ADJOINING GEOLOGICAL SURVEY OF CANADA MAPS

MAP 1390A
CARCAJOU CANYON
DISTRICT OF MACKENZIE

This map has been produced from a scanned version of the original map
Reproduction par numérisation d'une carte sur papier

1390A