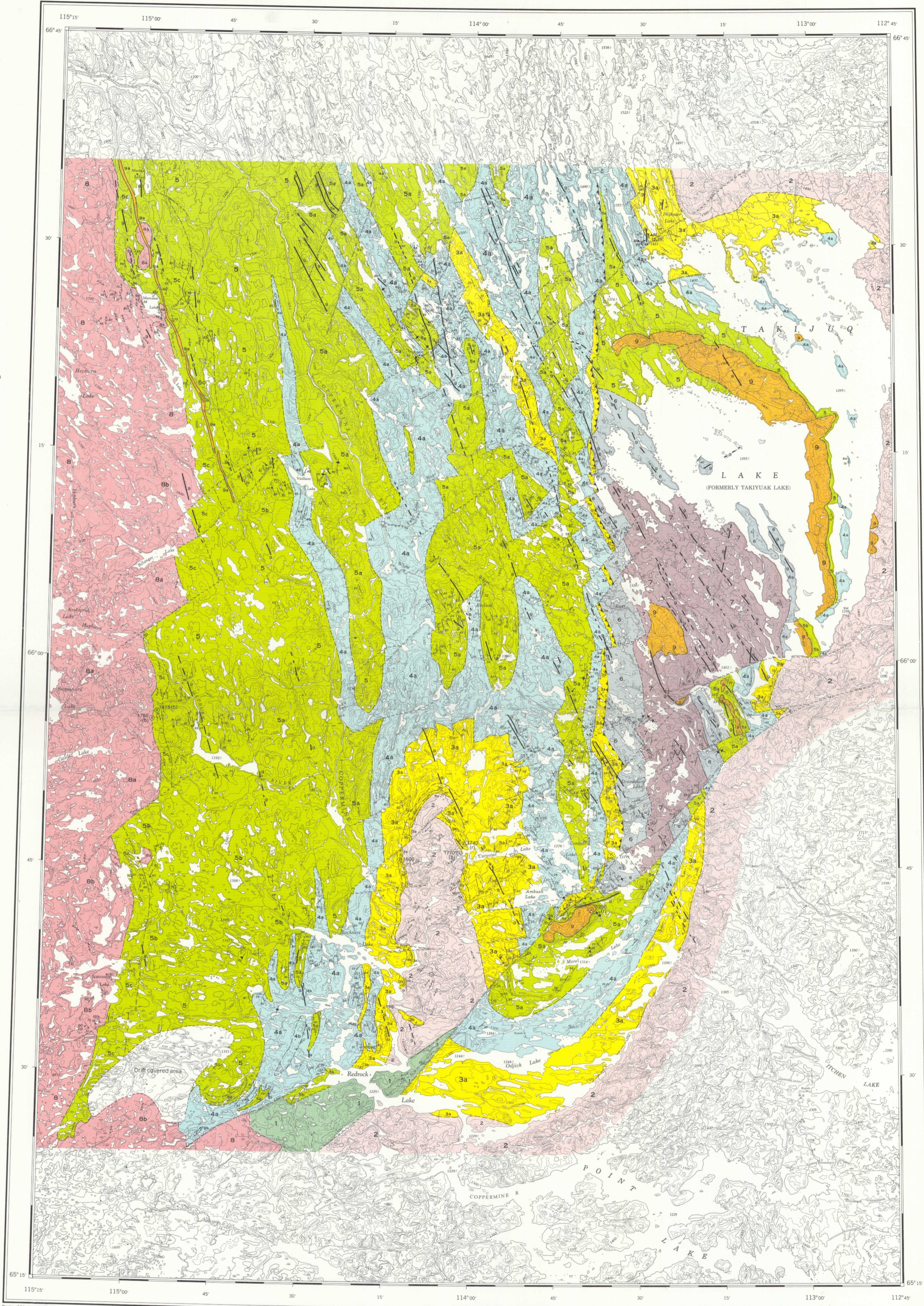




GEOLOGICAL SURVEY OF CANADA  
DEPARTMENT OF ENERGY, MINES AND RESOURCES



LEGEND

- HELIKIAN**
- 9 Diabase dykes and sills; possibly some dykes and sills of Hadrynian age; 9a, Muskox intrusion: picrite, bronzite, gabbro, norite
- APHEBIAN (3-8)**
- 8 Ba, granite and allied rocks; 8b, migmatite, biotite-quartz schist, garnetiferous schist and gneiss; minor amphibolite, probably derived mainly from 3-7
  - 7 EPWORTH GROUP (3-7)
  - 7 Takiyak Formation: sandstone, siltstone, reddish brown and laminated
  - 6 Cowles Lake Formation: limestone and argillite, interlaminated and interbedded; minor greywacke
  - 5 Recluse Formation: 5a, argillite, concretionary argillite and siltstone, quartzite, greywacke, minor carbonate; 5b, phyllite, slate, minor schist; 5c, biotite-quartz schist, quartzite, andalusite, cordierite, and sillimanite-bearing schist; minor migmatite; 5d, andesite, massive and porphyritic. West of Coppermine River, may include undifferentiated 3 and 4.
  - 4 Rocknest Formation: 4a, dolomite, laminated to massive, detrital in part, commonly stromatolitic; minor argillite, chert, limestone; 4b, andesite, massive, pillowed, fragmental and amygdaloidal
  - 3 Odjick Formation: 3a, argillite, quartzite, minor quartz-pebble conglomerate; minor dolomite and limestone; 3b, andesite, massive, porphyritic, pillowed, fragmental, and amygdaloidal
- ARCHAEN**
- 2 Granite and allied rocks, granite-gneiss, migmatite; includes some undifferentiated biotite-quartz schist and amphibolite of Yellowknife Group
  - YELLOWKNIFE GROUP
  - 1 Metabasalt, amphibolite, chlorite schist; massive, pillowed, and fragmental

- Geological boundary (defined or approximate; assumed) .....
- Bedding, tops known (horizontal, inclined, vertical, overturned) .....
- Bedding, tops unknown (inclined, vertical) .....
- Schistosity, gneissosity, cleavage, foliation (inclined, vertical, dip unknown) .....
- Cleavage (inclined, vertical) .....
- Lineation (horizontal, inclined) .....
- Fault (defined or approximate; assumed) .....
- Thrust fault (teeth in direction of dip; approximate) .....
- Glacial striae, direction of ice movement known .....
- Potassium-argon age (b) biotite, (m) muscovite, (r) whole rock ..... 1600 (r) ©

MINERALS

- Chalcocopyrite ..... cp
- Magnetite ..... mag
- Pyrite ..... py
- Pyrrhotite ..... po

To accompany Paper 73-39 by J.A. Fraser

Geological cartography by the Geological Survey of Canada

Any revisions or additional geological information known to the user would be welcomed by the Geological Survey of Canada

Base-map assembled by the Geological Survey of Canada from maps published at the same scale 1/250,000 by the Surveys and Mapping Branch

Magnetic declination 1973 varies from 37°42.6' easterly at centre of west edge to 39°51' westerly at centre of east edge. Mean annual change 9.2' easterly

Elevations in feet above mean sea-level

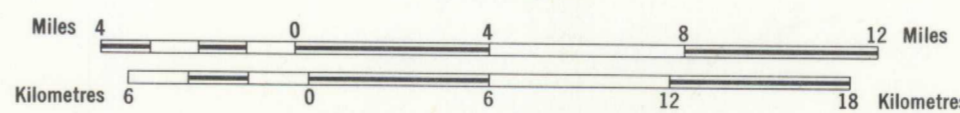
Geographical names subject to revision



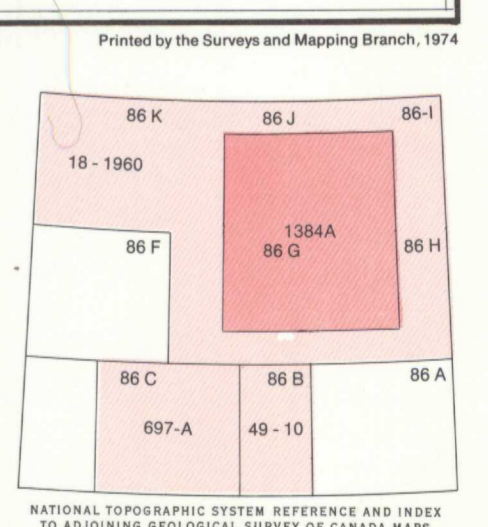
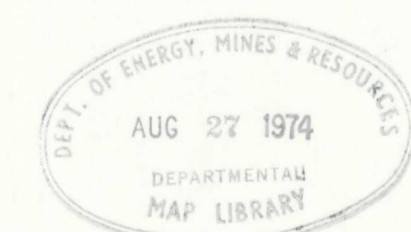
INDEX MAP

MAP 1384A  
PAPER 73-39  
GEOLOGY  
**THE EPWORTH GROUP  
ROCKNEST LAKE AREA**  
DISTRICT OF MACKENZIE

Scale 1:250,000



Universal Transverse Mercator Projection  
© Crown Copyrights reserved



MAP 1384A  
THE EPWORTH GROUP  
ROCKNEST LAKE AREA  
DISTRICT OF MACKENZIE

612 Ca g 1900 C.