

LEGEND

DATING METHODS AND MINERAL ABBREVIATIONS table with columns for K, Potassium-Argon; R, Rubidium-Strontium; U, Uranium-Thorium-Lead and various mineral abbreviations like Biotite, Zircon, etc.

LABORATORY DESIGNATION

- List of laboratory designations: a. University of Alberta, b. University of British Columbia, c. University of Toronto, etc.

Sample location (igneous, metamorphic, sedimentary, other) ... O, A, D, D, D
Age in millions of years ... 100, 150, 200
Surface sample, subsurface sample, site or flows ... 100, 150, 200
Example (mineral, dating method, age, laboratory) ... K20X9
Structural province boundary ...
Bathymetric contours (depth in metres) ...

Isotopic age data compiled by R.K. Wanless, 1969
Background geology from Map 1251A, Tectonic Map of Canada
Cartography by the Geological Survey of Canada

DECAY CONSTANTS table with columns for parent isotope, decay constant, and half-life.

TECTONIC AND LITHOLOGIC SYMBOLS

- List of tectonic and lithologic symbols: Marginal terranes, Unconformable deposits, Metasedimentary rocks, etc.

KEY TO CLASSIFICATION AND NOMENCLATURE

Table with columns: TIME CLASSIFICATION, GEOLOGY, SYMBOLS, MEAN AGE. Lists geological units like Tertiary, Quaternary, etc.

LEGEND

- LEGEND section describing various geological features and symbols used on the map.

POST OROGENIC FEATURES

- POST OROGENIC FEATURES section describing features like Late Paleozoic, Early Tertiary, etc.

LEGEND

- LEGEND section describing various geological features and symbols used on the map.

LEGEND

- LEGEND section describing various geological features and symbols used on the map.

LEGEND

- LEGEND section describing various geological features and symbols used on the map.

IGNEOUS ROCKS

- IGNEOUS ROCKS section listing rock types: Acidic: granite, quartz monzonite, etc.; Basic and ultrabasic: gabbro, anorthosite, etc.

METAMORPHIC ROCKS

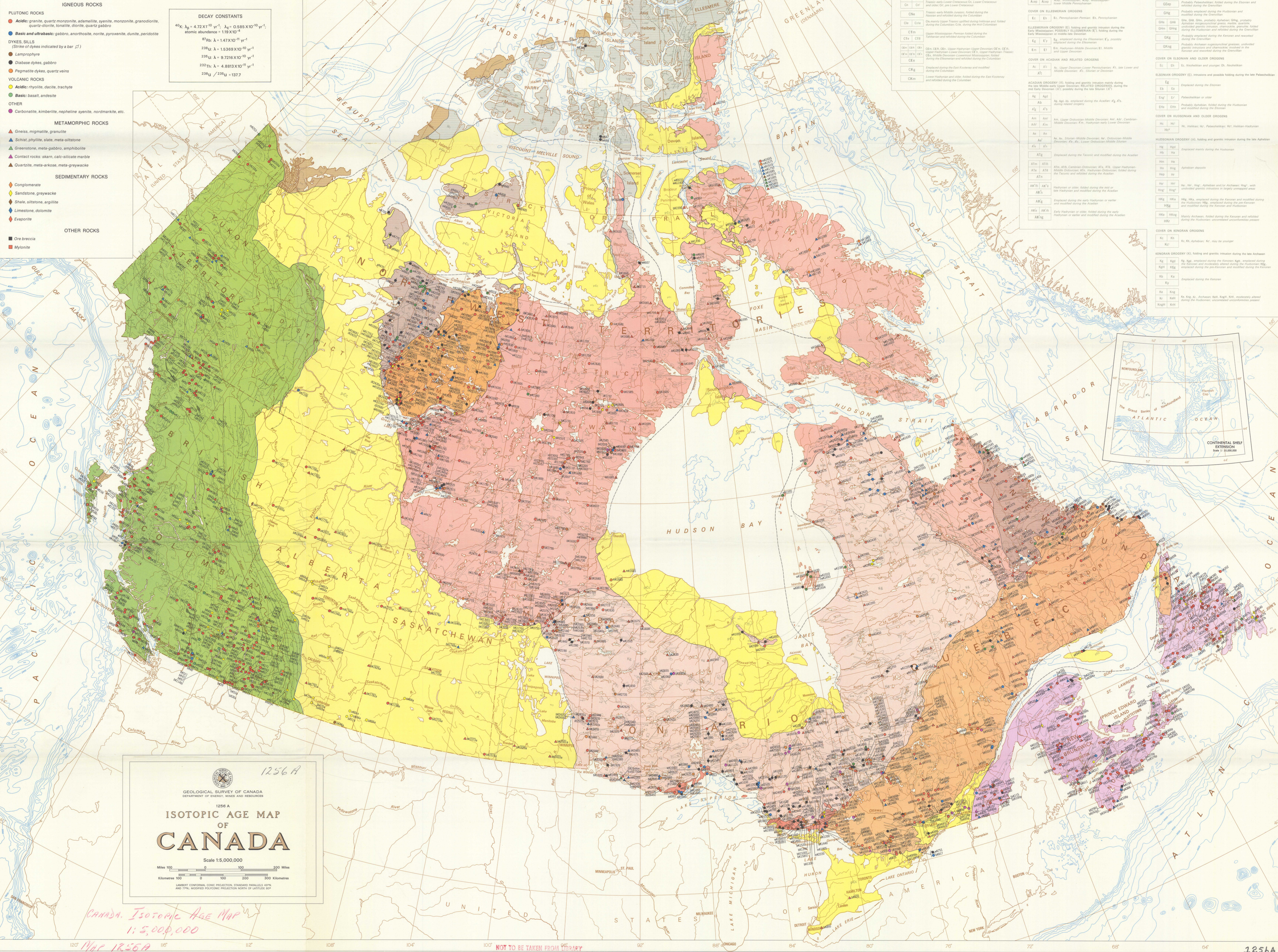
- METAMORPHIC ROCKS section listing rock types: Gneiss, migmatite, granulite, Schist, etc.

SEDIMENTARY ROCKS

- SEDIMENTARY ROCKS section listing rock types: Conglomerate, Sandstone, shale, siltstone, etc.

OTHER ROCKS

- OTHER ROCKS section listing rock types: Ore breccia, Mylonite.



Geological Survey of Canada logo and title: 1256 A ISOTOPIC AGE MAP OF CANADA. Scale 1:5,000,000. Includes a scale bar in miles and kilometers.

Handwritten notes: 1256A, Canada, Isotopic Age Map, 1:5,000,000, MAP 1256A, 1170