

LEGEND

Map-units shown by uncoloured legend blocks do not appear on this map

- PLEISTOCENE AND HOLOCENE**
- 21 Alluvial and glacial deposits
 - 20 LAKE ISLAND FORMATION: basaltic flows, scoriae and ashes
- TERTIARY**
- UPPER MIOCENE AND/OR LOWER PLEIOCENE**
- 19 Rhyolite
 - 18 Vesicular basalt, olivine basalt
- MIOCENE**
- 17 Rhyolite and quartz-feldspar porphyry
 - 16 Granite and syenite; 16a, granite; 16b, syenite.
- OLIGOCENE AND/OR MIOCENE**
- 15 BELLA BELLA FORMATION: andesitic volcanic rocks, minor sediments
- EOCENE OR PALEOCENE**
- COAST PLUTONIC ROCKS (in part)
- 14 Quartz monzonite; 14a, possibly in part of the same age as map-unit 5
 - 13 Granodiorite
- CRETACEOUS**
- LOWER CRETACEOUS**
- HAUTERIVIAN AND/OR BARREMIAN
- 12 Andesitic lava; 12a, black slates
- JURASSIC**
- MIDDLE JURASSIC**
- HAZELTON GROUP (TIPPER, 1963)
- 11 Andesitic volcanic rocks, minor sediments; 11a, agglomerate; 11b, greywacke
- MIDDLE OR LOWER JURASSIC (?)**
- 10 Black slate and argillite; 10a, conglomerate
- MIDDLE AND/OR LOWER JURASSIC**
- 9 Purplish, massive diorite, pyroxene diorite, gabbro, norite
- TRIASSIC (?)**
- 8 Metasediments, biotite-hornblende-garnet schist, biotite-garnet-sillimanite schist, metavolcanics, limestone, quartzite; 8a, limestone; 8b, conglomerate
 - 7 Greenstone, chlorite schist, areas of abundant andesitic dykes; 7a, quartz diorite; 7b, diorite; 7c, probable eruptive neck
- MIDDLE TRIASSIC (?)**
- COAST PLUTONIC ROCKS (in part)
- 6 Foliated, chloritized granodiorite, probably retrograde equivalent of unit (5)
 - 5 Foliated granodiorite
 - 4 Foliated, chloritized quartz diorite, probably retrograde equivalent of unit (3); 4a, mainly granodiorite; 4b, mainly diorite; 4c, mainly greenstone; 4d, massive quartz diorite
 - 3 Foliated quartz diorite
- PERMIAN (?) OR OLDER**
- 2 Gneissic diorite, with inclusions of metasediments and metavolcanics; 2a, mainly quartz diorite; 2b, mainly greenstone; 2c, massive diorite
 - 1 Feldspar-quartz-biotite gneiss, garnet-biotite gneiss, amphibolite, banded gneiss, veined gneiss
- Note: map-unit numbers are underlined where map-units are relatively well dated (see table of formations)

- Rock outcrop x
- Geological boundary (defined or approximate, assumed) - - - - -
- Bedding, tops known (horizontal, inclined) + - - - -
- Bedding, tops unknown (inclined, vertical) - - - - -
- Primary flow structures in volcanic rocks (horizontal, inclined) // - - - - -
- Foliation, gneissosity, schistosity (horizontal, inclined, vertical, dip unknown) + / / - - - - -
- Foliation, gneissosity, schistosity, cutting above foliation (inclined, vertical) // - - - - -
- Axes of minor folds, lineation (horizontal, inclined) - - - - -
- Fault (defined, approximate, assumed) - - - - -
- Synform (arrow indicates plunge) - - - - -
- Fossil locality ⊕
- Locality where age has been determined (in million years m.y.) (b) on biotite; (h) on hornblende; (m) on muscovite; (w.r.) on whole rock 87-5 m.y. (b) ⊕
- Mineral occurrence Cu x
- Agmatite ▲
- Limestone ls

MINERALS

Copper Cu	Molybdenum Mo
Gold Au	Silver Ag
Iron Fe	Zinc Zn
Lead Pb		

Geology by A.J. Baer, 1962-1965; W.W. Hutchison, 1963-1965; J.G. Souther, 1963; and J.A. Roddick, 1965

To accompany GSC Memoir 372 by A.J. Baer

Published, 1972
Copies of this map may be obtained from the Geological Survey of Canada, Ottawa

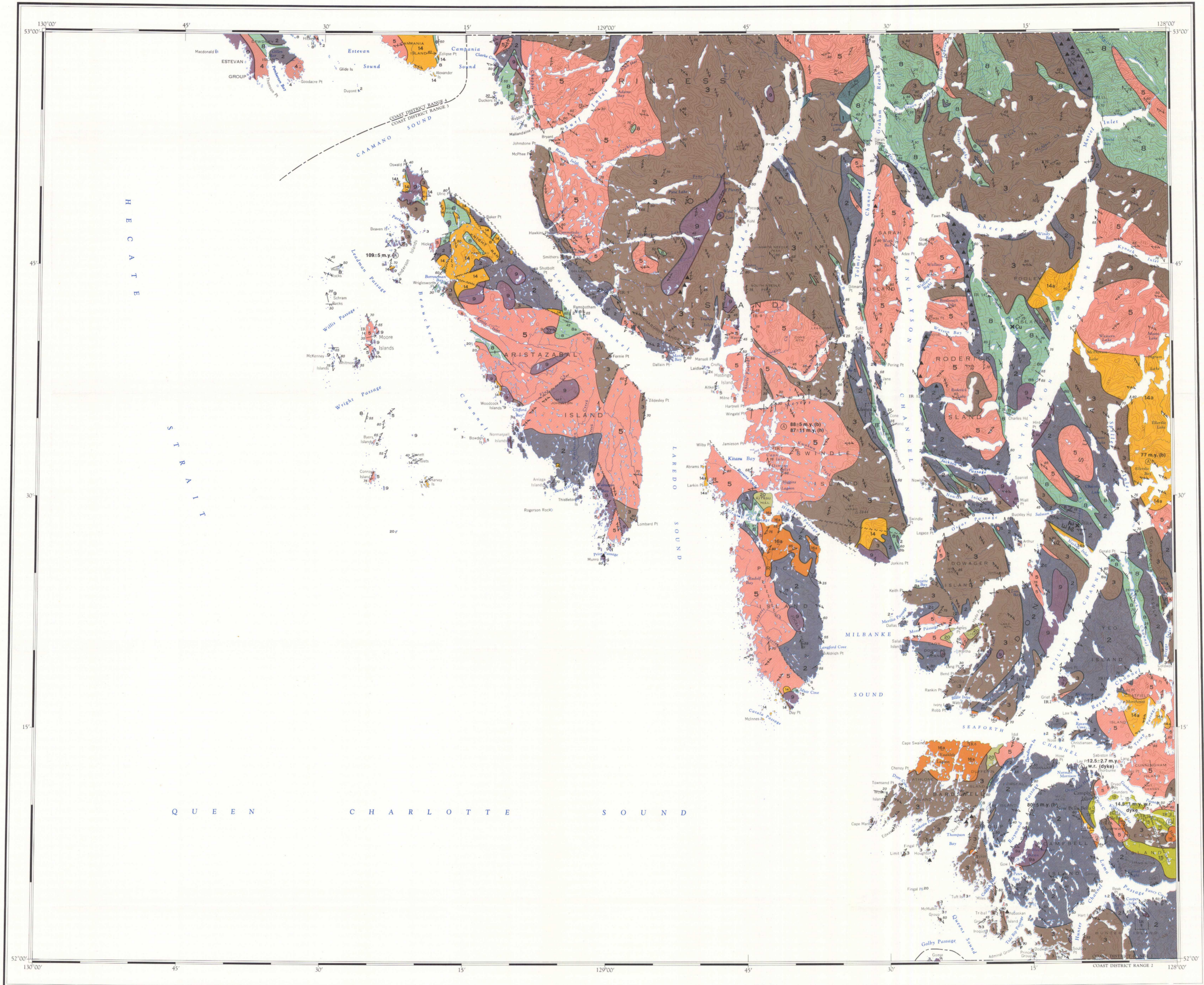


INDEX MAP

Geological cartography by Geological Survey of Canada

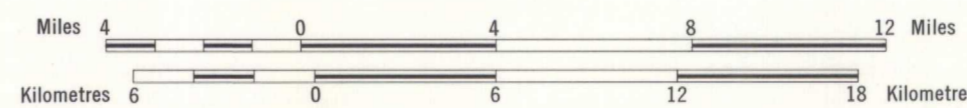
Base map at the same scale published by the Surveys and Mapping Branch, 1973

Copies of the topographical edition of this map may be obtained from the Map Distribution office, Department of Energy, Mines and Resources, Ottawa



MAP 1328 A
GEOLOGY
LAREDO SOUND
BRITISH COLUMBIA

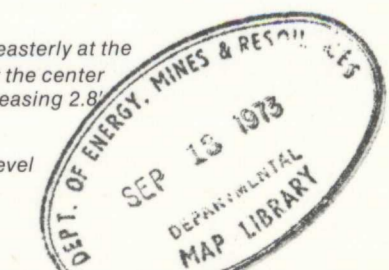
Scale 1:250,000



Any revisions or additional information known to the user would be welcomed by the Geological Survey of Canada

Magnetic declination 1971 varies from 25°22' easterly at the center of the west edge to 25°23' westerly at the center of the east edge. Mean annual change decreasing 2.8'

Elevations in feet above mean sea-level



Printed by the Surveys and Mapping Branch

103 G	103 H	93 E
103 B	103 A	93 D
	1328A	1327A
102 O	102 P	92 M

NATIONAL TOPOGRAPHIC SYSTEM REFERENCE AND INDEX TO GEOLOGICAL SURVEY OF CANADA MAPS

MAP 1328A

LAREDO SOUND
BRITISH COLUMBIA

NOT TO BE TAKEN FROM LIBRARY
NE PAS SORTIR DE LA BIBLIOTHÈQUE

1328A