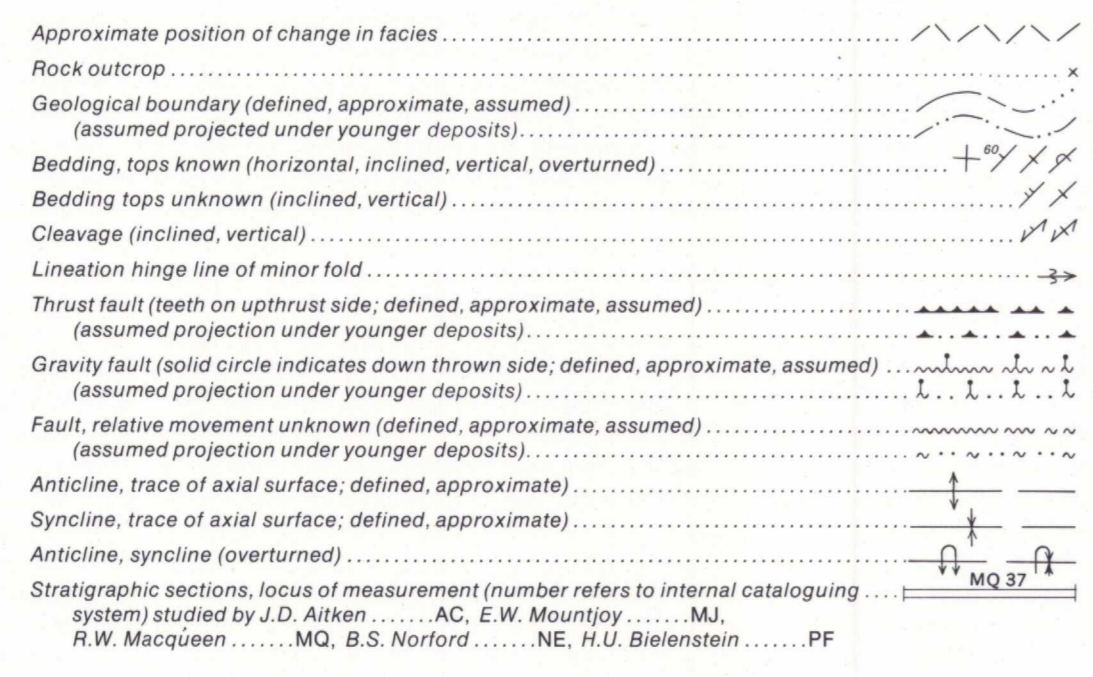


LEGEND

- QUATERNARY**  
PLEISTOCENE AND RECENT  
Qls Landslide  
Qd Till, alluvium, colluvium; gravel, sand silt shown only where bedrock is extensively concealed
- MESOZOIC**  
TRIASSIC  
SPRAY RIVER GROUP  
Tsm SULPHUR MOUNTAIN FORMATION: dark grey and brown, thin-bedded siltstone, silty mudstone, shale, and dolomitic siltstone
- PERMIAN AND PENNSYLVANIAN**  
ROCKY MOUNTAIN GROUP  
Ppim Light grey quartz sandstone, dolomitic sandstone, silty dolomite; chert; phosphatic siltstone and chert
- MISSISSIPPIAN**  
RUNDLE GROUP (Mh, Mt)  
Met ETHERINGTON FORMATION: light grey limestone, cherty limestone, and calcarenitic limestone; dolomite, cherty dolomite; green and red shale; siltstone; limestone and dolomite breccia  
Mmh MOUNT HEAD FORMATION: dense dark grey limestone and argillaceous dolomite; grey limestone and calcarenitic limestone, cherty and silty dolomite and limestone  
Mlv LIVINGSTONE FORMATION: light grey, in part cherty and dolomitic skeletal limestone and skeletal-micritic limestone; dolomite  
Mbfu Upper Part: dark grey, cherty, argillaceous and dolomitic skeletal to micritic limestone; and brownish grey argillaceous dolomite  
Mbfm Middle Part: light to dark grey, cherty, skeletal or skeletal-micritic limestone; and argillaceous and dolomitic skeletal to micritic limestone  
Mblf Lower Part: dark grey and brownish grey shale and calcareous shale; brown argillaceous and calcareous siltstone; argillaceous and cherty dolomite and micritic limestone
- DEVONIAN**  
UPPER DEVONIAN  
Dpa PALLISER FORMATION: thickly bedded and massive mottled dolomitic limestone; grey micritic limestone; greyish brown dolomite  
Dax ALEXO FORMATION: thinly bedded silty dolomite; dolomitic sandstone; light grey dolomite; dolomite and limestone breccia  
Dss SASSENACH FORMATION: quartz sandstone, calcareous sandstone and siltstone; silty mudstone; argillaceous limestone; calcareous shale  
Dmh MOUNT HAWK FORMATION: grey argillaceous limestone calcareous mudstone and shale  
Dca CAIRN FORMATION: massive to thickly bedded dark brownish grey, medium crystalline dolomite with Amphipora and stromatolite fossils; dark grey limestone, dolomitic limestone and dolomite in the lower part; minor chert and breccia; includes channel-filling red beds (Yahstinda Formation) locally at base
- PALEOZOIC**  
CAMBRIAN AND ORDOVICIAN  
Csu SULLIVAN FORMATION: shale, calcareous, brownish grey and greenish grey; interbedded with limestone, mainly fragmental, partly oolitic; minor siltstone at the base  
Cwf WATERFOWL FORMATION: limestone, mainly dense with dolomitic partings and mottling; partly silty and sandy; dolomitized equivalents; minor siltstone and sandstone  
Cca CATHEDRAL FORMATION: dense, grey, dolomite-mottled massive limestone; dolomitized equivalents  
Cmw MOUNT WHYTE FORMATION: grey to green shale interbedded with grey, dense thin-bedded limestone with dolomite partings and mottlings  
Ceg LOWER CAMBRIAN COG GROUP  
Ceg Quartz sandstone, quartzitic, massive and thickly bedded; interbedded with grey siltstone and silty shale; pisolitic and fragmental limestone at the top
- PROTEROZOIC**  
WINDERMERE (HADRYNYAN) MITTE GROUP  
Emi Quartz sandstone, feldspathic and argillaceous; interbedded with green, greenish grey, and grey slate, and with feldspathic quartz pebble conglomerate
- EXSHAW AND BANFF FORMATIONS:** dark grey, finely crystalline, thin-bedded limestone; dark brownish grey shale and calcareous shale; brown argillaceous siltstone, argillaceous and cherty skeletal limestone, and argillaceous dolomite



Geology by R.A. Price and E.W. Mountjoy based on studies of vertical air photographs (1964-1970), ground and air observations by J.D. Aitken, H.U. Bielenstein, D.G. Cook, E.W. Mountjoy and R.A. Price (1964-1966), and published geological maps

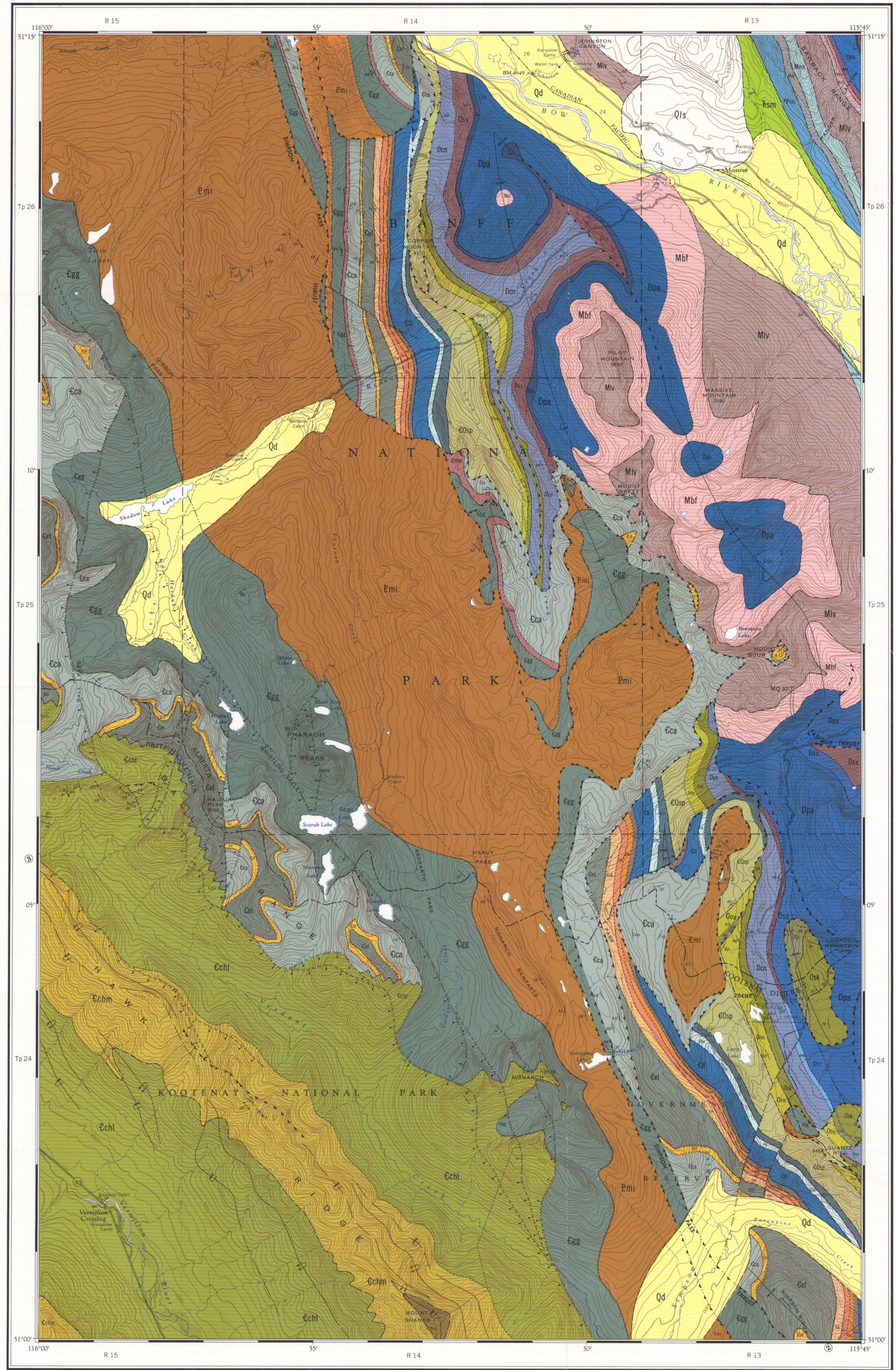
Geological cartography by the Geological Survey of Canada

Base-map at the same scale published by the Surveys and Mapping Branch in 1959

Copies of the topographical edition of this map may be obtained from the Map Distribution Office, Department of Energy, Mines and Resources, Ottawa

Approximate magnetic declination 1972, 22°13' East decreasing 2.6' annually

Elevations in feet above mean sea-level



Published, 1972  
Copies of this map may be obtained from the Geological Survey of Canada, Ottawa

MAP 1295A  
GEOLOGY  
**BANFF**  
(WEST HALF)  
WEST OF FIFTH MERIDIAN  
ALBERTA - BRITISH COLUMBIA  
Scale 1:50,000

INDEX MAP

Miles 1 0 1 2  
Metres 1000 0 1000 2000 3000

NOT TO BE TAKEN FROM LIBRARY  
NE PAS SORTIR DE LA BIBLIOTHEQUE

RECEIVED  
MAR 1973  
GSC LIBRARY

82 N/a	82 0/n	82 0/a
1297A	1296A	1272A
1271A		
82 N/1	82 0/a	82 0/3
1295A	1294A	1266A
1265A		
82 N/6	82 0/3	82 0/4

NATIONAL TOPOGRAPHIC SYSTEM REFERENCE AND INDEX TO GEOLOGICAL SURVEY OF CANADA MAPS  
**BANFF**  
(West Half)  
ALBERTA - BRITISH COLUMBIA

1295A

ALTA - BC. - BANFF (W3)  
1:50,000  
1972 1295A