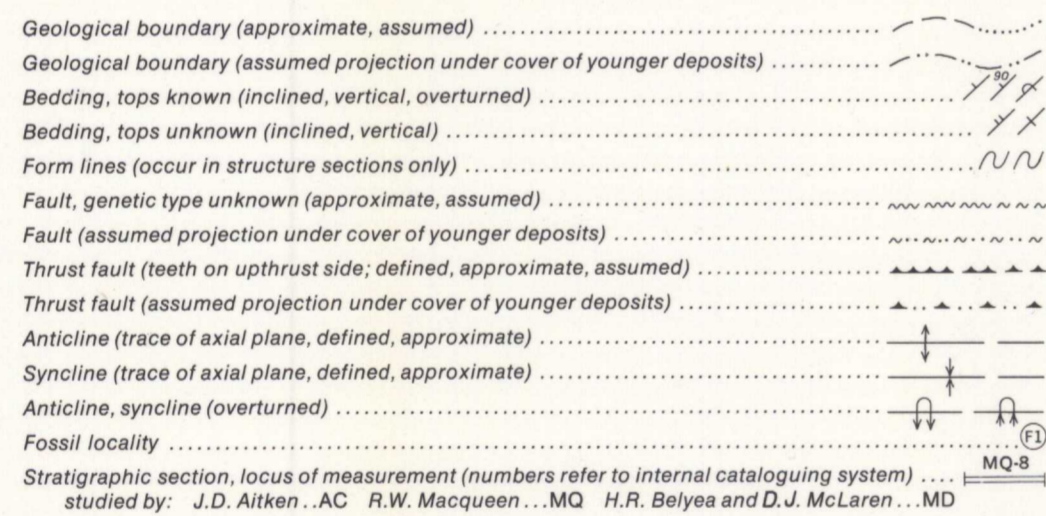


LEGEND

CENOZOIC	QUATERNARY PLEISTOCENE AND RECENT	Qd	Till, alluvium, colluvium; gravel, sand, silt
	JURASSIC AND (?) CRETACEOUS	Jk	KOOTENAY FORMATION: grey and black, carbonaceous and limonitic sandstone, grey and black siltstone; black carbonaceous mudstone and shale; coal
MESOZOIC	JURASSIC	Jf	Dark grey to black shale, dark grey siltstone and sandstone; dark grey, platy, silty, argillaceous limestone; brown, limonitic, quartz sandstone
	TRIASSIC	Trwh	SPRAY RIVER GROUP (Trm - Trh)
		Trsm	WHITEHORSE FORMATION: light grey, dolomitic siltstone and sandstone; red, green, and brown mudstone and siltstone; limestone and dolomite breccia
PALEOZOIC	PERMIAN AND PENNSYLVANIAN ROCKY MOUNTAIN GROUP	Pfpm	Light grey quartz sandstone, dolomitic sandstone, silty dolomite, chert
	MISSISSIPPIAN	Met	RUNDLE GROUP (Miv - Met)
		Met	ETHERINGTON FORMATION: light grey limestone, cherty limestone and calcarenitic limestone, dolomite, cherty dolomite, green and red shale, siltstone; breccia
		Mmhu	Upper part: dense dark grey and black limestone, argillaceous limestone, and dolomite, silty dolomite
		Mmhl	Lower part: light grey finely crystalline limestone, calcarenitic limestone, and cherty and silty dolomite
		Mm	MOUNT HEAD FORMATION
		Mtv	TURNER VALLEY FORMATION: light grey skeletal calcarenite and calcarenitic limestone; cherty limestone; dolomite
		Msh	SHUNDA FORMATION: light to dark grey dense limestone, calcarenitic limestone, and cherty limestone
		Mpk	PEKISKO FORMATION: light grey skeletal calcarenite, calcarenitic limestone, cherty limestone, and dolomite
		Mbfu	Upper part: dark grey, cherty argillaceous and dolomitic limestone and calcarenitic limestone, and brownish grey argillaceous dolomite
	Mblm	Middle part: light to dark grey skeletal calcarenite, calcarenitic limestone, and argillaceous and dolomitic limestone	
	Mbfl	Lower part: dark grey and brownish grey shale and calcareous shale; brown argillaceous siltstone; argillaceous and cherty limestone	
PALEOZOIC	DEVONIAN	Dpa	UPPER DEVONIAN
		Dpa	PALLISER FORMATION: thickly bedded and massive, mottled dolomitic limestone; grey dense limestone; greyish brown dolomite
		Dax	ALEXO FORMATION: thinly bedded silty dolomite, dolomitic sandstone, light grey dolomite, and breccia
		Dsx	FAIRHOLME GROUP (Don - Dsx)
		Dsx	SOUTHSK FORMATION: massive to thickly bedded, light to medium grey, finely to coarsely crystalline dolomite; greyish brown finely to coarsely crystalline dolomite
		Dcn	CAIRN FORMATION: massive to thickly bedded, dark brownish grey and grey, medium crystalline dolomite with Amphigoreward stromatopora beds; dark grey limestone dolomitic limestone and dolomite in the lower part; minor chert and breccia; includes channel-filling red beds (Yahinda Formation) locally at base
		Cosp	CAMBRIAN AND ORDOVICIAN
		Cosp	SURVEY PEAK FORMATION: interbedded grey calcareous shale and grey limestone (partly dense, partly fragmental, and partly algal masses); minor chert; basal grey to olive calcareous shales weathering pale greenish grey; minor limestone (mainly flat-pebble conglomerate) and siltstone
		Cm	UPPER CAMBRIAN
		Cm	MISTAYA FORMATION: limestone, partly dense, dolomite mottled; dolomitized equivalents; minor chert; prominent algal stromatolites
		Cbc	BISON CREEK FORMATION: interbedded shale and mudstone, grey and greenish grey, calcareous, and limestone, partly fragmental, partly dense
		Cil	LYELL FORMATION: limestone, partly dense, dolomite mottled, partly dense laminated, locally silty and sandy, mainly massive; dolomitized equivalents
		Csu	SULLIVAN FORMATION: interbedded greenish grey to brown calcareous shale, and limestone, mainly fragmental, partly oolitic; dense algal masses
		Cw	MIDDLE AND UPPER CAMBRIAN
		Cw	WATERFOWL FORMATION: limestone, mainly dense with dolomite mottling and laminae, partly silty and sandy; minor fragmental and oolitic limestone; dolomitized equivalents
	Car	MIDDLE CAMBRIAN	
	Car	ARCTOMYS FORMATION: interbedded purple-red, green, and grey shale, and yellow dolomitic siltstone; minor grey to yellow dolomite; mud cracks, ripple marks, and salt-crystal casts	
	Cpk	PIKA FORMATION: dense grey limestone, flaggy and thin-bedded, with partings and mottling of dense dolomite; limestone flat-pebble conglomerate; oolite; dolomitized equivalents; minor shale near the base	
	Cel	ELDON FORMATION: dense, predominantly grey, dolomite-mottled, massive limestone; dolomitized equivalent	
	Cat	STEPHEN FORMATION: interbedded grey to green shale, and limestone, partly dense, partly fragmental, partly oolitic; minor siltstone	
	Cca	CATHEDRAL FORMATION: limestone, predominantly dense, dolomite-mottled, massive, dolomitized equivalents	
	Cmw	MOUNT WHITE FORMATION: interbedded grey to green shale and grey dense thin-bedded limestone with dolomite partings and mottlings (occurs in structure sections only)	
	Cgg	MIDDLE (?) AND LOWER CAMBRIAN GOD GROUP	
	Cgg	Quartz sandstone; siltstone; shale (occurs in structure sections only)	

Note A: undifferentiated Eldon, Pika, Arctomys, Waterfowl, Sullivan, Bison Creek and Mistaya formations  
Note B: undifferentiated Rundle and Rocky Mountain groups



INDEX TO FOSSIL LOCALITIES BY GSC CATALOGUE NUMBER

F1	60991-60994, 60995-66400, 66170-66173, 74091-74092
F2	62045-62064, 74110-74133
F3	57774
F4	62101-62110
F5	62073-62099, 74086-74090
F6	62037-62044, 66214-66226

Geology by R. A. Price and E. W. Mountjoy based on studies of vertical air photographs (1964-1967), ground and air observations by J. D. Aitken, H. J. Bielenstein, D. G. Cook, G. B. Leach, E. W. Mountjoy and R. A. Price (1964-1967), ground observations by E. W. Mountjoy and D. K. Norris (1966) and published geological maps

Geological compilation by R. A. Price

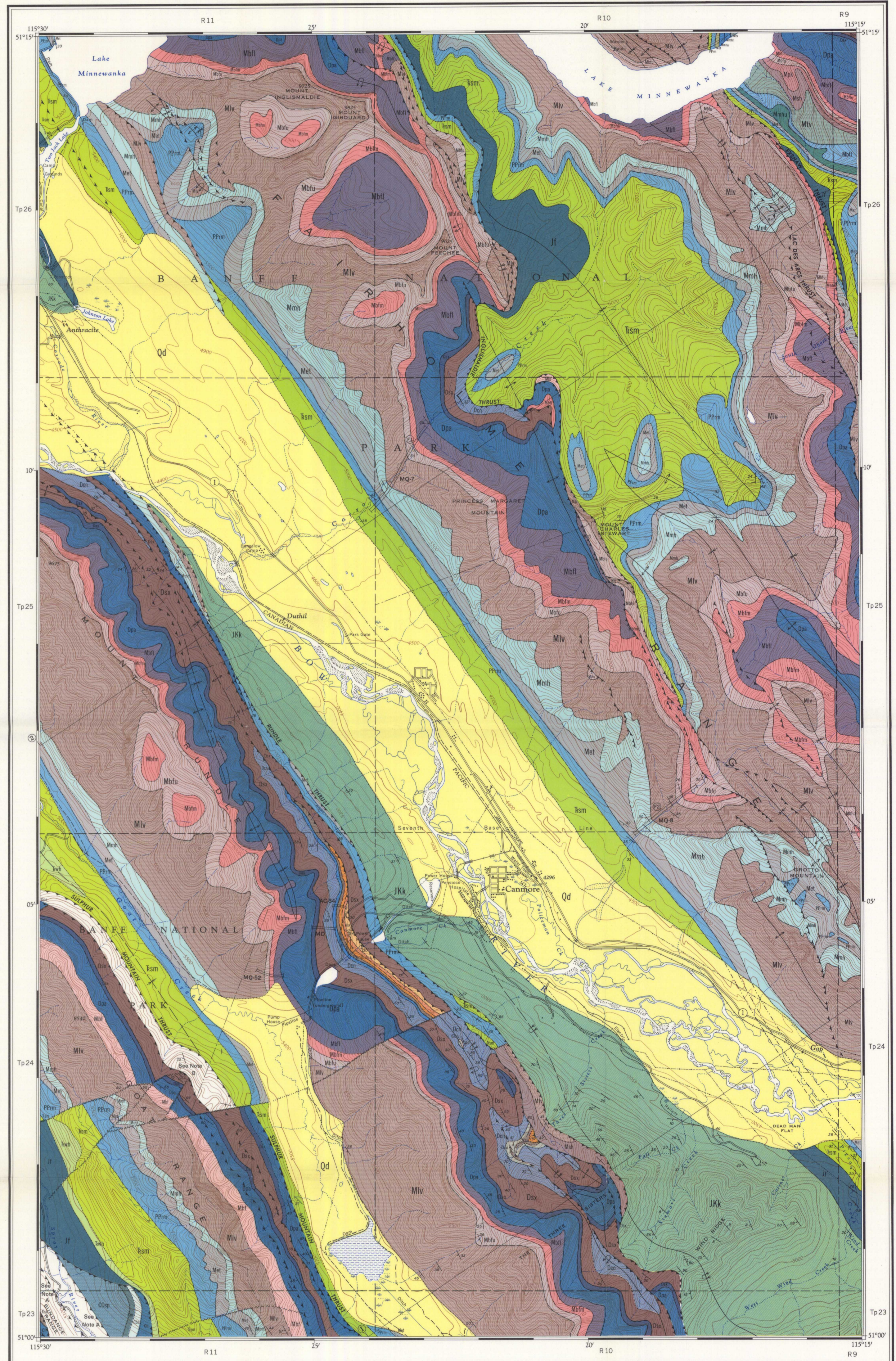
Geological cartography by the Geological Survey of Canada

Base-map at the same scale published by the Surveys and Mapping Branch in 1959

Copies of the topographical edition of this map may be obtained from the Map Distribution Office, Department of Energy, Mines and Resources, Ottawa

Approximate magnetic declination 1969, 22° 04' East decreasing 3.4" annually

Elevations in feet above mean sea-level

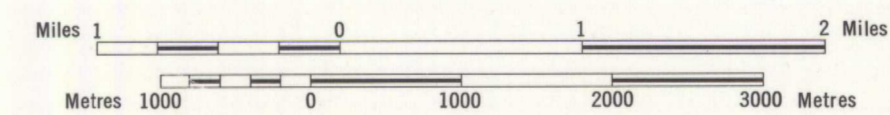


Published, 1970  
Copies of this map may be obtained from the Geological Survey of Canada, Ottawa



MAP 1266A  
GEOLOGY  
CANMORE  
(WEST HALF)  
WEST OF FIFTH MERIDIAN  
ALBERTA

Scale 1:50,000



820/3	820/6	820/7
1272A	1271A	
820/4	820/5	820/2
1266A	1265A	
820/13	820/4	820/15

NATIONAL TOPOGRAPHIC SYSTEM REFERENCE AND INDEX TO GEOLOGICAL SURVEY OF CANADA MAPS

Map 1266A  
CANMORE  
(West Half)  
ALBERTA

NOT TO BE TAKEN FROM LIBRARY  
NE PAS SORTIR DE LA BIBLIOTHÈQUE

1266 A