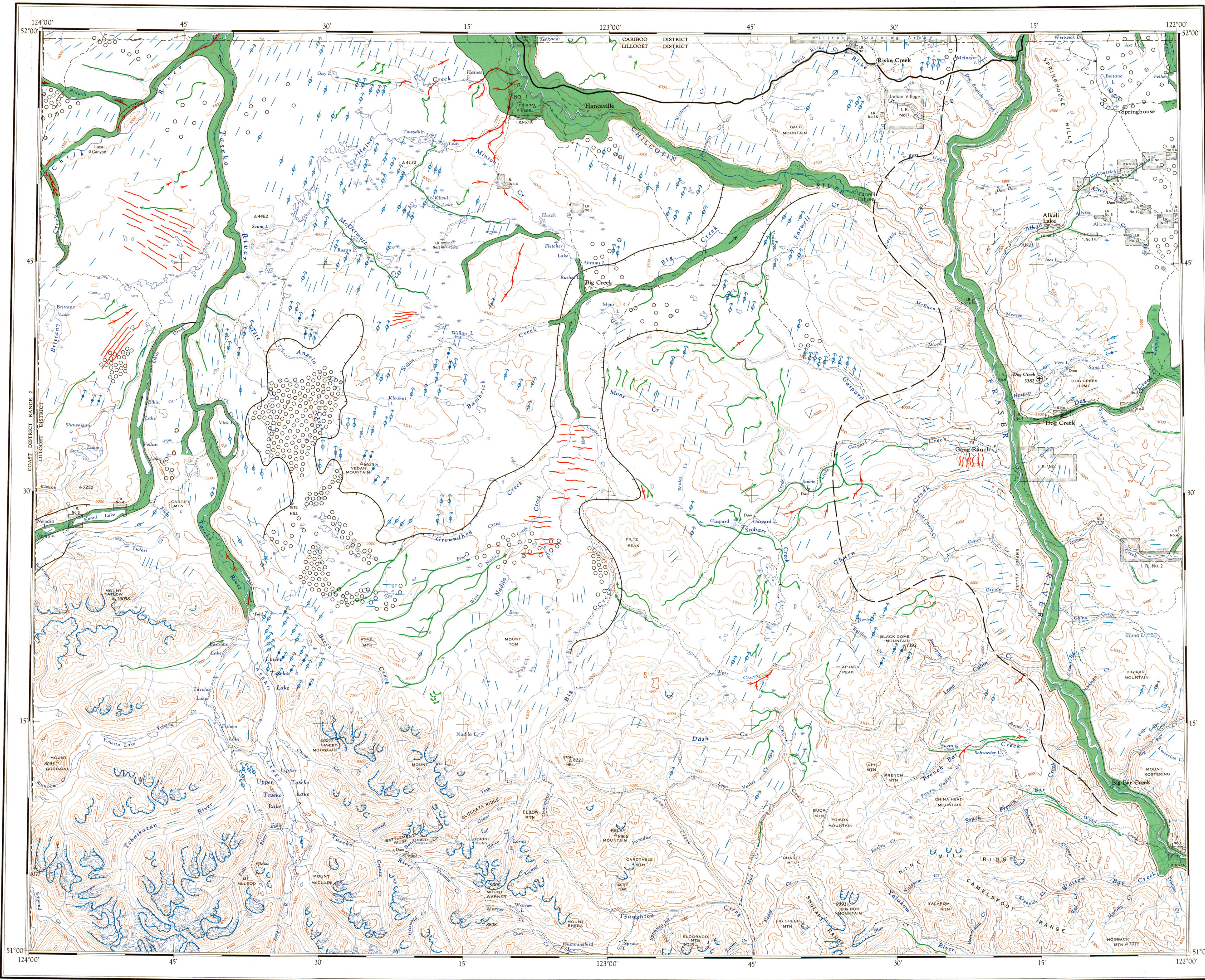
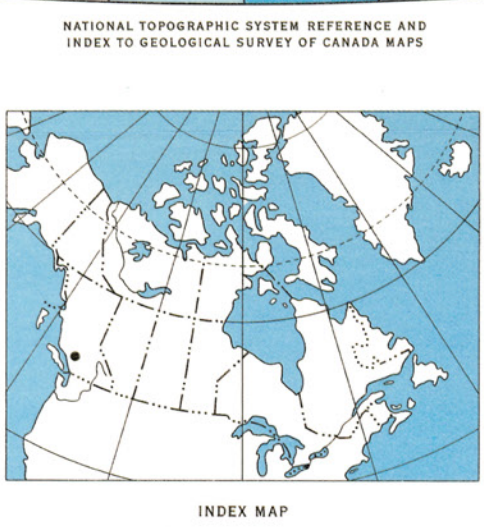


- LEGEND**
- Drumlin (direction of flow known, unknown)
  - Rock drumlin (direction known from crag and tail)
  - Glacial grooves
  - Glacial striae on bedrock
  - Large meltwater or outwash channels and river channels bounded by cutbanks and terraces (arrows indicate direction of flow)
  - Small meltwater or abandoned stream channels (direction of flow known, unknown)
  - Pitted terrane
  - Eskers and esker complexes
  - Cirques
  - Drift ridges of uncertain origin
  - Approximate limit of late advance of Cariboo Mountain ice
  - Approximate margins or limits of late advance of valley glaciers or ice lobes from Coast Mountains

Geology by H. W. Tipper, 1954-1969  
 To accompany GSC Bulletin 196 by H. W. Tipper  
 Geological cartography by the Geological Survey of Canada  
 Topographic base-map at the same scale published by the Surveys and Mapping Branch, 1955  
 Magnetic declination 1970, varies from 23°55' easterly at centre of west edge to 23°36' easterly at centre of east edge. Mean annual change decreasing 3.2'  
 Copies of the topographical edition of this map may be obtained from the map distribution office, Department of Energy, Mines and Resources, Ottawa

93L	93K	93J	93I
		1287A	
93E	93F	93G	93H
		1288A	
93D	93C	93B	93A
	1289A	1290A	
92M	92N	92D	92P
	1291A	1292A	1293A

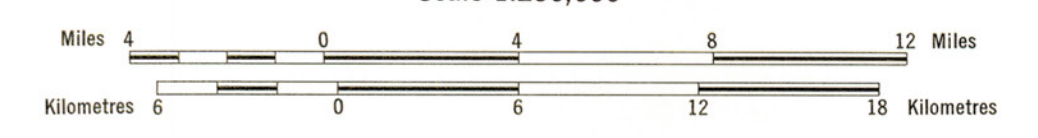


Published, 1971  
 Copies of this map may be obtained from the Geological Survey of Canada, Ottawa

Printed by the Surveys and Mapping Branch

MAP 1292A  
 SURFICIAL GEOLOGY  
**TASEKO LAKES**  
 BRITISH COLUMBIA

Scale 1:250,000



This map has been reprinted from a scanned version of the original map.  
 Reproduction par numérisation d'une carte sur papier.

MAP 1292A  
 TASEKO LAKES  
 BRITISH COLUMBIA