

- LEGEND**
- Drumlin (direction of flow known, unknown)
 - Rock drumlin (direction known from crag and tail)
 - Glacial grooves
 - Glacial striae on bedrock
 - Large meltwater or outwash channels and river channels bounded by outbanks and terraces (arrows indicate direction of flow)
 - Small meltwater or abandoned stream channels (direction of flow known, unknown)
 - Lake deposits
 - Pitted terrane
 - Eskers and esker complexes
 - Crevasse fillings
 - Drift ridges of uncertain origin
 - Area of ablation moraine
 - Approximate limit of late advance of Cariboo Mountain ice

Geology by H.W. Tipper, 1954-1969

To accompany GSC Bulletin 196 by H.W. Tipper

Geological cartography by the Geological Survey of Canada

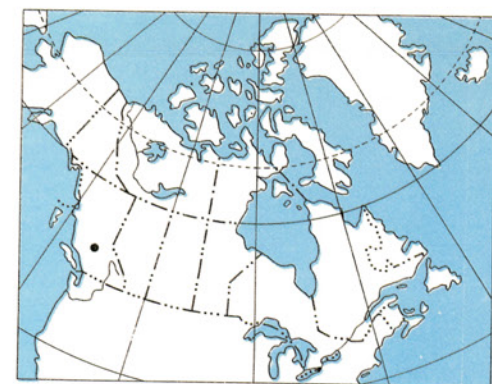
Topographic base-map at the same scale published by the Surveys and Mapping Branch, 1955

Magnetic declination 1970, varies from 24° 31' easterly at centre of west edge to 24° 11' easterly at centre of east edge. Mean annual change decreasing 3.4'

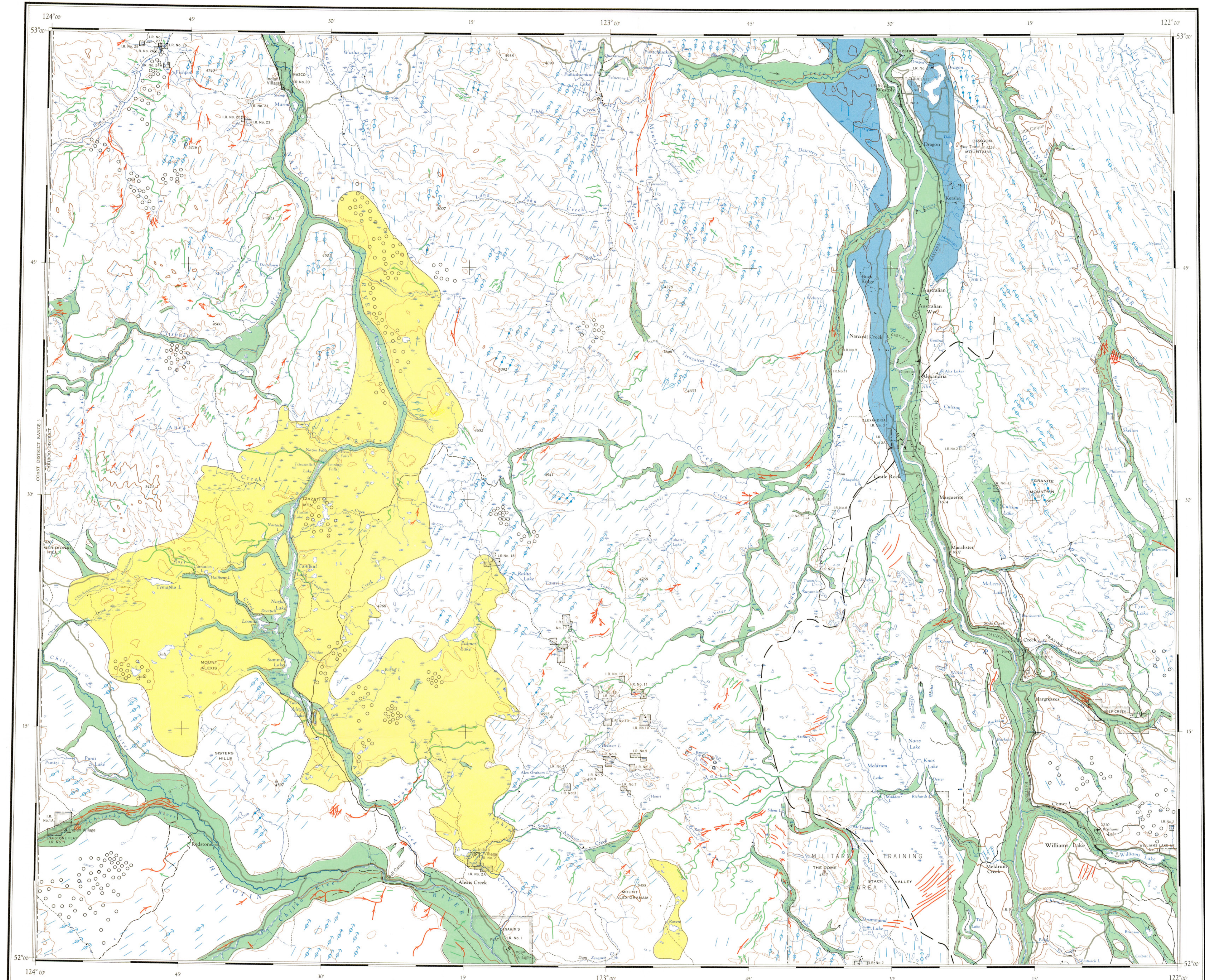
Copies of the topographical edition of this map may be obtained from the map distribution office, Department of Energy, Mines and Resources, Ottawa

93L	93K	93J	93I
		1287A	
93E	93F	93G	93H
		1288A	
93D	93C	93B	93A
	1289A	1290A	
92M	92N	92O	92P
	1291A	1292A	1293A

NATIONAL TOPOGRAPHIC SYSTEM REFERENCE AND INDEX TO GEOLOGICAL SURVEY OF CANADA MAPS



INDEX MAP

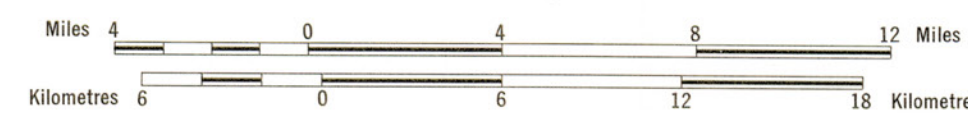


Published, 1971.
Copies of this map may be obtained from the Geological Survey of Canada, Ottawa

Printed by the Surveys and Mapping Branch

MAP 1290A
SURFICIAL GEOLOGY
QUESNEL
 BRITISH COLUMBIA

Scale 1:250,000



This map has been reprinted from a scanned version of the original map.
 Reproduction par numérisation d'une carte sur papier.

MAP 1290A
 QUESNEL
 BRITISH COLUMBIA