

GEOLOGICAL SURVEY OF CANADA
DEPARTMENT OF ENERGY, MINES AND RESOURCES

- LEGEND**
- Drumlin (direction of flow known, unknown)
 - Rock drumlin (direction known from crag and tail)
 - Glacial grooves
 - Glacial striae on bedrock
 - Large meltwater or outwash channels and river channels bounded by cutbanks and terraces (arrows indicate direction of flow)
 - Small meltwater or abandoned stream channels (direction of flow known, unknown)
 - Pitted terrane
 - Eskers and esker complexes
 - Drift ridges of uncertain origin
 - Lake deposits
 - Cirques
 - End-moraine of valley glaciers
 - Approximate limit of late advance of Anahim Lake lobe
 - Approximate limit of late advance of Kleena Kleena ice

Geology by H.W. Tipper, 1954-1969

To accompany GSC Bulletin 196 by H.W. Tipper

Geological cartography by the Geological Survey of Canada

Topographic base-map at the same scale published by the Surveys and Mapping Branch, 1955

Magnetic declination 1970, varies from 24°53' easterly at centre of west edge to 24°31' easterly at centre of east edge. Mean annual change decreasing 3-3'

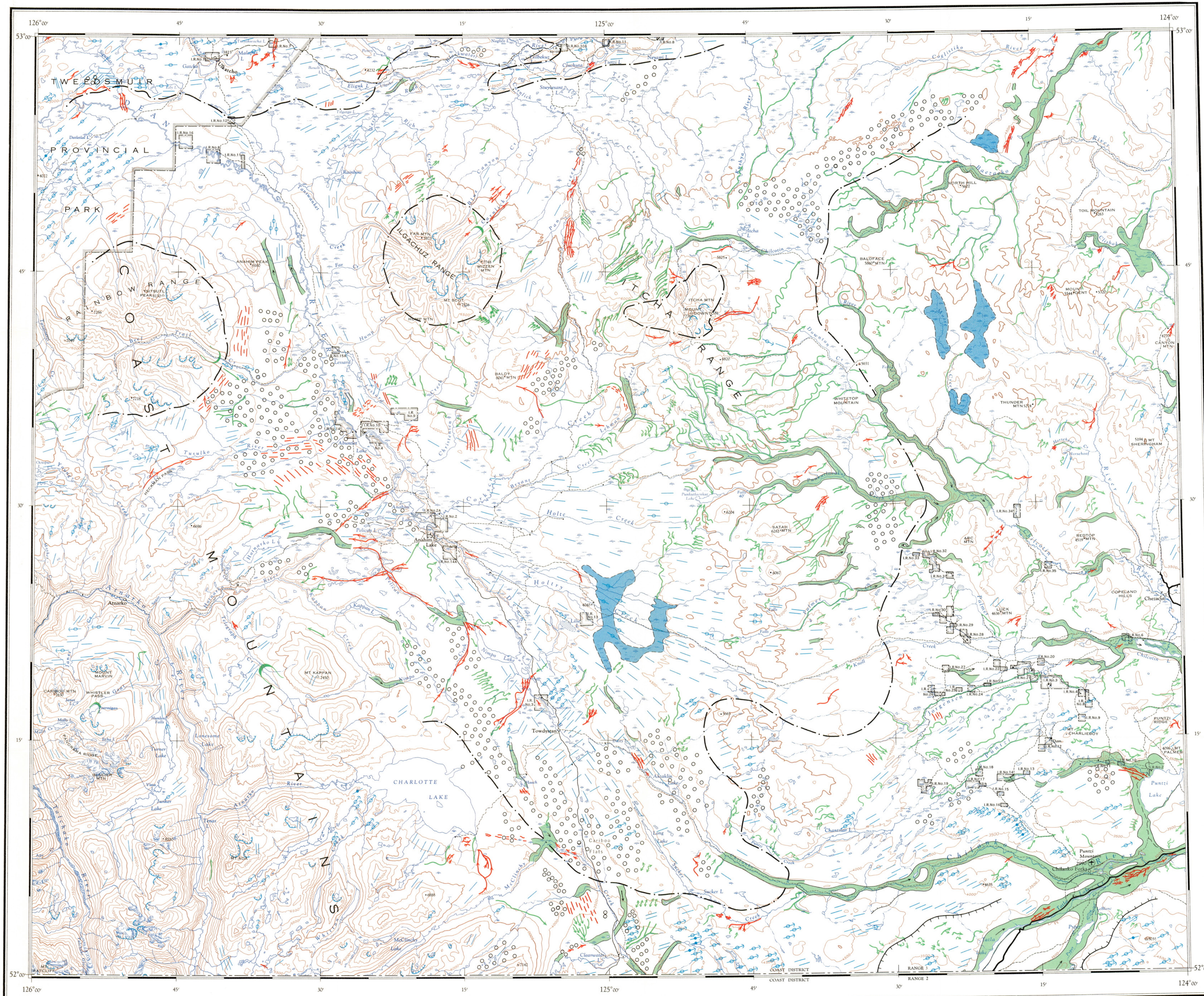
Copies of the topographical edition of this map may be obtained from the map distribution office, Department of Energy, Mines and Resources, Ottawa

93L	93K	93J	93I
		1287A	
93E	93F	1288A	93H
93D	93C	1289A	93A
	1289A	1290A	
92M	92N	92O	92P
	1291A	1292A	1293A

NATIONAL TOPOGRAPHIC SYSTEM REFERENCE AND INDEX TO GEOLOGICAL SURVEY OF CANADA MAPS



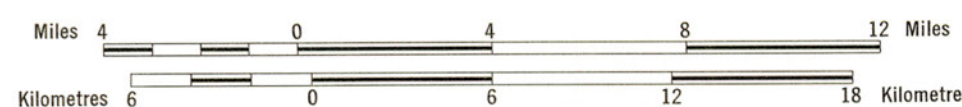
INDEX MAP



Published, 1971
Copies of this map may be obtained from the Geological Survey of Canada, Ottawa

MAP 1289A
SURFICIAL GEOLOGY
ANAHIM LAKE
BRITISH COLUMBIA

Scale 1:250,000



This map has been reprinted from a scanned version of the original map.
Reproduction par numérisation d'une carte sur papier.

MAP 1289A
ANAHIM LAKE
BRITISH COLUMBIA