

LEGEND

NOTE: Areas covered by Lake Diefenbaker and other reservoirs are left blank, geological formations within these areas are shown by reference numbers only

QUATERNARY (PLEISTOCENE AND RECENT)

- NON GLACIAL DEPOSITS**
- 13** Colluvium: rotational slump blocks of till and overlying sediments, failure planes generally extend into underlying bedrock shale
 - 12** Pond Deposits: mainly silt and clay in poorly drained depressions, commonly alkaline
 - 11** Alluvium: 11a, sand, silt, clay, minor gravel; modern stream deposits; 11b, fine to medium sand within South Saskatchewan River channel; 11c, high level sand and gravel deposits of South Saskatchewan River
 - 10** Wind Deposits: medium-grained sand derived by eolian modification of 5, 6, and 11; 10a, area of 10 characterized by parabolic dunes and blowouts
- GLACIO-FLUVIAL AND GLACIO-LACUSTRINE DEPOSITS**
- 9** Delta Deposits: mainly sand and gravel; in places overlying extensive deposits of fine sand and silt
 - 8** Alluvium-Colluvium: deposits within meltwater run-off channels and glacial lake spillways; 8, undifferentiated silt, clay, boulder lag, minor sand and gravel; 8a, sand and gravel
 - 7** Lake Deposits: 7a, undifferentiated, generally silty clay with minor fine sand; 7b, mainly silty clay with local varved deposits; 7c, mainly fine to medium sand; 7d, mainly sand and gravel; 7e, areas in which till surface is masked by thin lake deposits
 - 6** Ice Contact Deposits: stratified sand and gravel in steep sided mounds; kames
 - 5** Outwash: mainly sand and gravel, some till; pitted topography

- GLACIAL DEPOSITS**
- 4** Ridged End Moraine: till, local deposits of sand and gravel; ice-disintegration mounds and rimmed kettles superimposed on sub-parallel arcuate ridges
 - 3** Washboard Moraine: till, generally overlain by 1 foot to 15 feet of stratified ablation deposits; discontinuous oriented ridges of low relief
 - 2** Hummocky Moraine: 2a, till, local deposits of sand, gravel, and stratified ablation material; non-oriented knob and rimmed kettle topography; 2b, till, areas of oriented ice-disintegration mounds and rimmed kettles; 2c, dead-ice plateau; 2d, till, overlain by 15 feet or less of stratified lake (?) deposits; oriented and non-oriented mounds and rimmed kettles
 - 1** Ground Moraine: till, generally overlain by 1 foot to 15 feet of stratified ablation deposits; non oriented depressions and ridges of low relief

- MESOZOIC**
- R** Bedrock: exposed or thinly covered Bearpaw Formation

- Bedrock outcrop
- Geological boundary (defined, approximate, assumed)
- Trend of ridged end moraine
- Trend of washboard moraine ridges
- Trend of buried moraine
- Grooves and/or luting
- Eskers (direction known)
- Ice-marginal channel or glacial lake spillway (distinct, indistinct)
- Direction of flow in spillway
- Buried valley (indistinct)
- Chain of kettles
- Locality where age has been determined
- Gravel pit

Geology by J.S. Scott, 1958, 1959 and 1960
To accompany GSC Bulletin 190 by J.S. Scott

Geological cartography by the Geological Survey of Canada, 1968

- Roads
- Cart track
- Trail
- Railway
- Post office
- School
- Horizontal control point
- Township boundary
- Section line
- Military and Indian reserve boundary
- Intermittent lake and stream
- Irrigation canal
- Marsh
- Contours (interval 100 feet)
- Height in feet above mean sea-level

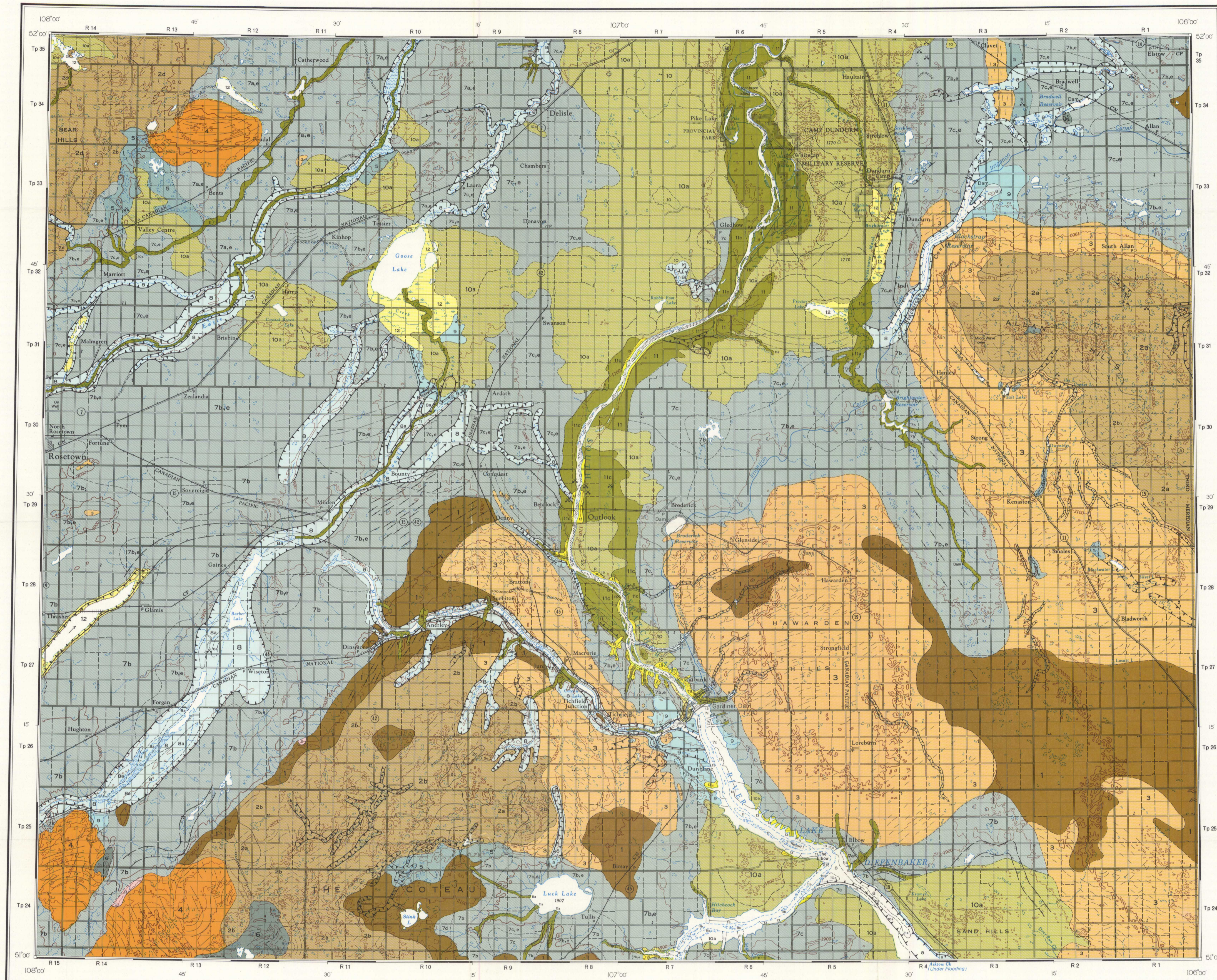
Base-map compiled and drawn by the Surveys and Mapping Branch 1964, with revisions by the Geological Survey of Canada, 1968, from maps supplied by the Department of Natural Resources of Saskatchewan

Magnetic declination 1968 varies from 17°16' easterly at centre of east edge to 18°52' easterly at centre of west edge. Mean annual change decreasing 2.8'

Published 1970
Copies of this map may be obtained from the Geological Survey of Canada, Ottawa

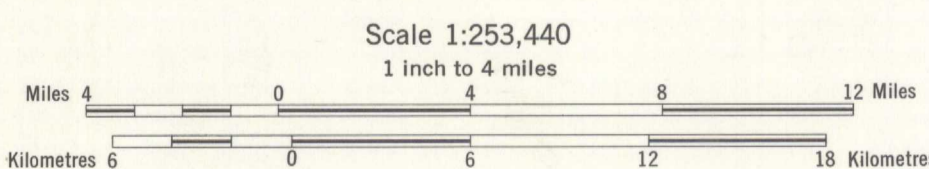


INDEX MAP



MAP 1249A
 SURFICIAL GEOLOGY
ROSETOWN
 WEST OF THIRD MERIDIAN
 SASKATCHEWAN

NOT TO BE TAKEN FROM LIBRARY
NE PAS SORTIR DE LA BIBLIOTHÈQUE



73 C	73 B	73 A
72 N	72 O	72 P
72 K	72 J	72 I

NATIONAL TOPOGRAPHIC SYSTEM REFERENCE
ROSETOWN
SASKATCHEWAN



1249A