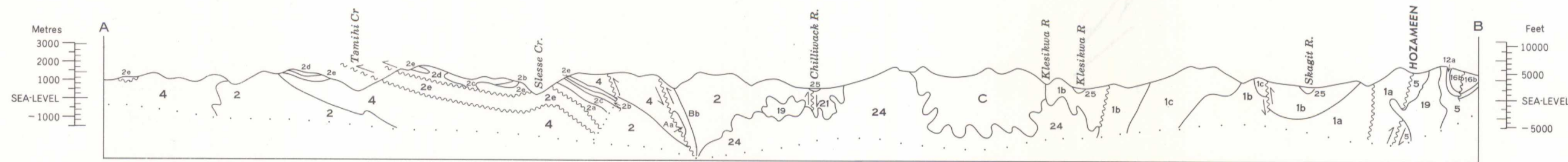




GEOLOGICAL SURVEY OF CANADA
DEPARTMENT OF ENERGY, MINES AND RESOURCES



PRELIMINARY SERIES

Diagrammatic Cross-Section along line A-B

LEGEND

- QUATERNARY**
PLEISTOCENE AND RECENT
25 Glacial, glaciofluvial and fluvial gravel, sand and clay, talus and slope-wash deposits
- TERTIARY**
MIOCENE AND EARLIER
24 Granodiorite, quartz diorite
23 COQUHALLA GROUP
Basalt, rhyolite, tuff, agglomerate, diorite
22 SKAGIT FORMATION: andesite, tuff, agglomerate
- CRETACEOUS AND/OR TERTIARY**
Eocene and Paleocene or Uppermost Cretaceous
21 Conglomerate, sandstone
- EARLY TERTIARY AND/OR LATE CRETACEOUS**
20 Foliated granodiorite, quartz diorite
- CRETACEOUS**
UPPER CRETACEOUS OR (?) OLDER
19 Quartz diorite
- LOWER CRETACEOUS**
KINGSVALE GROUP
18 Basalt, andesite, agglomerate, tuff
- PASAYTEN GROUP**
17 Sandstone, conglomerate, pelite
- JACKASS MOUNTAIN GROUP**
16a, sandstone, pelite and conglomerate; 16b, sandstone, minor conglomerate
15 BROKENBACK HILL FORMATION: tuff, agglomerate, sandstone, pelite
14 PENINSULA FORMATION: sandstone, conglomerate
- JURASSIC AND/OR LOWER CRETACEOUS**
13 Foliated granodiorite
- JURASSIC**
UPPER JURASSIC
DEWDNEY CREEK GROUP
12a, sandstone, pelite; 12b, tuff, pelite
11 AGASSIZ PRAIRIE FORMATION: pelite, minor sandstone, tuff, limestone
10 KENT FORMATION: conglomerate
- MIDDLE JURASSIC**
9 BILLHOOK CREEK FORMATION: tuff, sandstone
8 MYSTERIOUS CREEK FORMATION: pelite
7 ECHO ISLAND FORMATION: tuff, minor agglomerate, sandstone, pelite
6 HARRISON LAKE FORMATION: intermediate to acidic flow and pyroclastic rock
- LOWER AND MIDDLE JURASSIC**
LADNER GROUP
5 Pelite, volcanic sandstone
- TRIASSIC AND JURASSIC**
UPPER TRIASSIC, LOWER AND UPPER JURASSIC
4 CULTUS FORMATION: pelite, sandstone
- TRIASSIC**
UPPER TRIASSIC
NICOLA GROUP
3 Porphyritic andesite and basalt
- PENNSYLVANIAN AND PERMIAN**
CHILLIWACK GROUP
2, basic volcanic rocks and pelites; 2a, pelite, siltstone, sandstone; 2b, Lower Pennsylvanian limestone; 2c, pelite, sandstone, conglomerate; 2d, Lower Permian limestone; 2e, basic volcanic flows, intermediate to acidic tuff and agglomerate
- DEVONIAN(?), CARBONIFEROUS(?) AND PERMIAN(?)**
HOZAMEEN GROUP
1, pelite, chert, basic volcanic rock, minor limestone; 1a, chert, basic volcanic rock; 1b, basic volcanic rock; 1c, chert, pelite; 1d, basic volcanic rock, chert, pelite; 1e, limestone
- ULTRAMAFIC ROCK**
A, serpentinite, serpentinized peridotite; includes some Upper Paleozoic volcanic rocks in broad belt northeast of Hope; Ab, pyroxenite; Ac, hornblende
- SCHIST, AMPHIBOLITE AND PHYLITE**
B, graphitic and quartzose phyllite; Bb, schist, amphibolite; Bc, migmatitic equivalent of Bb; Bd, amphibolite, hornblende, quartz diorite; in southwestern part of map-area between Welch Peak and Slesse Mountain these rocks are complexly imbricated with Upper Paleozoic rocks and the area shown as Bd includes both
- GNEISS**
C



- Geological boundary (defined - approximate, assumed)
- Bedding (horizontal, inclined, vertical)
- Schistosity, gneissosity, foliation in granitic rocks (inclined, vertical)
- Zone of imbricated Paleozoic and Mesozoic rocks
- Fault (defined or approximate, assumed)
- Fault (solid circle indicates downthrow side)
- Thrust fault (teeth on upper plate; defined or approximate, assumed)
- Antiform
- Synform
- Antiform or synform (arrow indicates plunge)
- Fossil locality
- Locality where age has been determined in millions of years
Determination by Geological Survey of Canada 39
Determination by University of British Columbia 16
Determination by Bradsgaard, Foinabee, Lipson, 1961 18
Mineral occurrence (number refers to property listed in text) 5 X

Geological compilation by J. W. H. Monger, 1969

Geological cartography by the Geological Survey of Canada, 1969

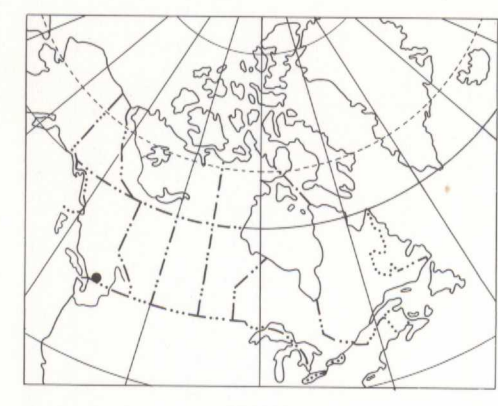
Magnetic declination 1969 varies from 22° 32' easterly at centre of west edge to 22° 23' easterly at centre of east edge. Mean annual change, decreasing 2.9'

Base-map at the same scale compiled and drawn by the Surveys and Mapping Branch, 1957

Elevations in feet above mean sea-level

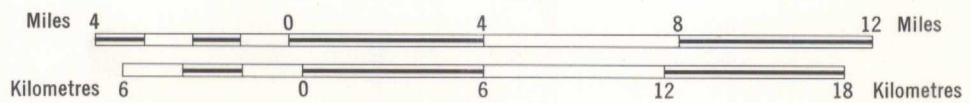
	92 J	92-I	82 L
		886A	1059A
42-1963 1151A	92 G	92 H	82 E
		888A	15-1961 6-1957
	92 B	92 A	

NATIONAL TOPOGRAPHIC SYSTEM REFERENCE AND INDEX TO ADJOINING GEOLOGICAL SURVEY OF CANADA MAPS



Copies of the topographical edition of this map may be obtained from the Map Distribution Office, Department of Energy, Mines and Resources, Ottawa.

MAP 12-1969
PAPER 69-47
GEOLOGY
HOPE
(West Half)
BRITISH COLUMBIA
Scale 1:250,000



Any revisions or additional information known to the user would be welcome by the Geological Survey of Canada.

HOPE
BRITISH COLUMBIA