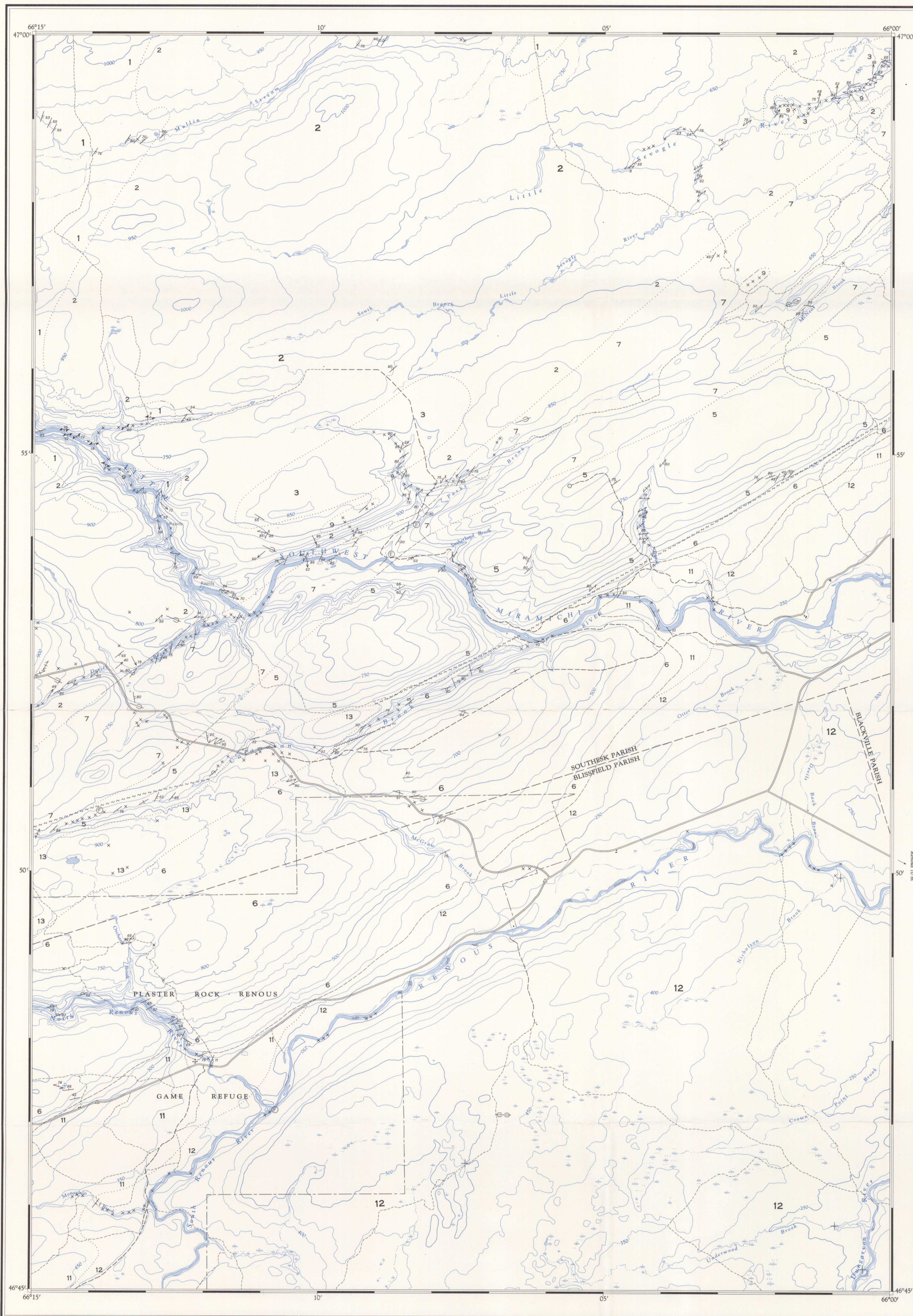




GEOLOGICAL SURVEY OF CANADA
DEPARTMENT OF ENERGY, MINES AND RESOURCES

PRELIMINARY SERIES



LEGEND

CARBONIFEROUS

13 Green to reddish brown conglomerate

PENNSYLVANIAN

12 Green to grey sandstone, siltstone, shale, and grit

11 Red to brown conglomerate, sandstone

DEVONIAN

10 Pink to grey quartz monzonite, granodiorite

DEVONIAN (?) AND EARLIER

9 Diorite, quartz diorite, diabase

8 Pink quartz monzonite, granodiorite

PALEOZOIC

SILURIAN

UPPER SILURIAN

7 Andesite, basalt, grey to green slate and siltstone, greywacke, acid volcanics, red manganiferous argillite and chert

MIDDLE AND UPPER SILURIAN

6 Grey slate, siltstone, greywacke

LOWER AND MIDDLE SILURIAN

5 Dark grey slate, siltstone, lithic greywacke, grit, and conglomerate

ORDOVICIAN

MIDDLE AND (?) UPPER ORDOVICIAN

4 Greywacke, slate, basalt, andesite, conglomerate, rhyolite

CAMBRIAN AND/OR LOWER ORDOVICIAN

3 Rhyolite, phyllite, quartz feldspar, augen schist

2 Phyllite, slate, quartzite, and schist

1 Paragneiss, schist

Rock outcrop x
Geological boundary (approximate, assumed)
Bedding, tops known (horizontal, inclined, vertical, overturned)
Bedding, tops unknown (inclined, vertical, dip unknown)
Schistosity, cleavage (inclined, vertical, dip unknown)
Gneissosity (horizontal, inclined, vertical)
Axis of minor fold (horizontal, inclined)
Fault (defined, assumed)
Joint (inclined, vertical)
Glacial striae (direction of ice movement known, unknown)
Eskers
Fossil locality

Geology by F. D. Anderson, 1969

To accompany Paper 69-12 by F. D. Anderson

Geological cartography by the Geological Survey of Canada

Base-map at the same scale published by the Surveys and Mapping Branch in 1958. Revision to roads by the Geological Survey of Canada, 1970

Copies of the topographical edition of this map may be obtained from the Map Distribution Office, Department of Energy, Mines and Resources, Ottawa

Approximate magnetic declination 1970, 22° 53' West, decreasing 1.4' annually

All elevations in feet above mean sea-level

Published, 1970
Copies of this map may be obtained from the
Geological Survey of Canada, Ottawa



MAP 14-1969
PAPER 69-12
GEOLOGY
McKENDRICK LAKE
(East Half)
NEW BRUNSWICK

Scale 1:50,000

Miles 1 0 1 2
Metres 1000 0 1000 2000 3000

ESIC CIST

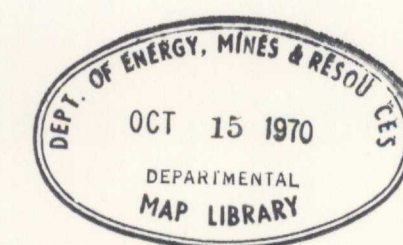
OCT 8 1996

Earth Sciences Secteur des sciences
de la Terre

MAP LIBRARY / CARTOTHEQUE

21 0/2	21 0/1	21 P/4
	1220A	1092A
21 J/18	21 J/16	21 1/13
	14-1969	
21 1/10	21 J/4	21 1/12
6-1963	20-1960	

NATIONAL TOPOGRAPHIC SYSTEM REFERENCE AND
INDEX TO GEOLOGICAL SURVEY OF CANADA MAPS



McKENDRICK LAKE
(East Half)
NEW BRUNSWICK

14-1969
E 10/2

G
3401
-C5
1956
G4
onr/c