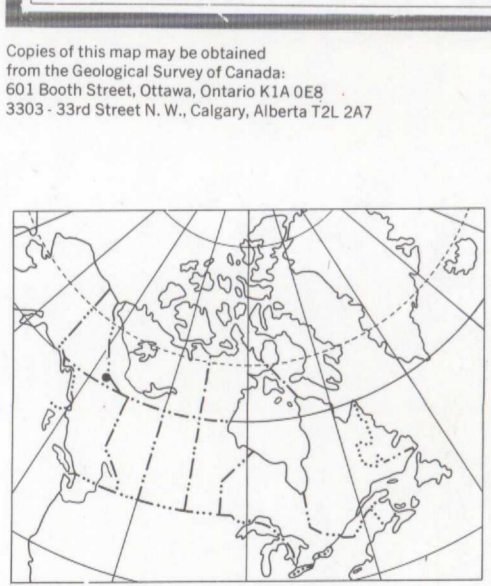




GEOLOGICAL SURVEY OF CANADA
DEPARTMENT OF ENERGY, MINES AND TECHNOLOGY



Surficial geology by R.W. Rutter and A.N. Boydell, 1972

Aerial photography mapping of the west half of the map
sheet by R.J. Hawes, 1976

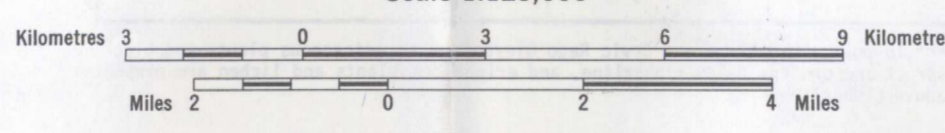
Bedrock geology after R.J.W. Douglas and D.K. Norris, 1961

Final compilation by R.J. Hawes, 1976

Thematic information on this map is, in part, reproduced
directly from author's copy

Any revisions or additional geological information known
to the user would be welcomed by the Geological Survey
of Canada

MAP 12-1979
SURFICIAL GEOLOGY AND GEOMORPHOLOGY
ROOT RIVER
DISTRICT OF MACKENZIE
Scale 1:125,000



Universal Transverse Mercator Projection
© Crown Copyright reserved

G3401-C5
1978-
G4
G4
G4

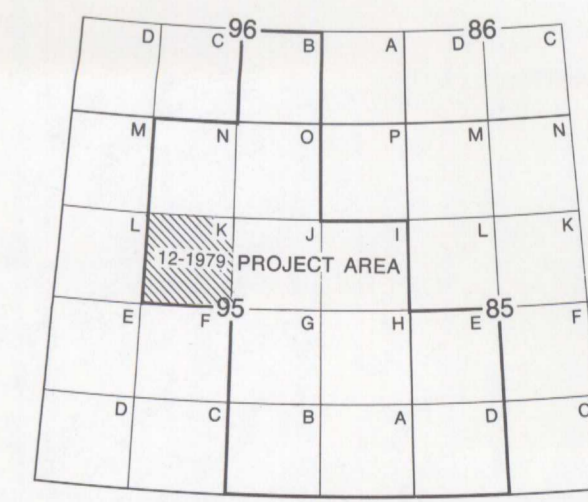
Base map at the scale of 1:250,000 published by
the Army Survey Establishment R.C.E. 1953-59

Copies of the topographical edition of this map
may be obtained from the Canada Map Office,
Department of Energy, Mines and Resources,
Ottawa, K1A 0S9

Geographical names subject to revision

Mean magnetic declination 1980, 33°02.5' East, decreasing
10.5' annually. Readings vary from 33°07.2' in the SE
corner to 33°43.8' in the NW corner of the map area
Elevations in feet above mean sea level

LIBRARY / BIBLIOTHÈQUE
DEC 8 1980
GEOLOGICAL SURVEY
COMMISSION GÉOLOGIQUE



MAP 12-1979
ROOT RIVER
DISTRICT OF MACKENZIE