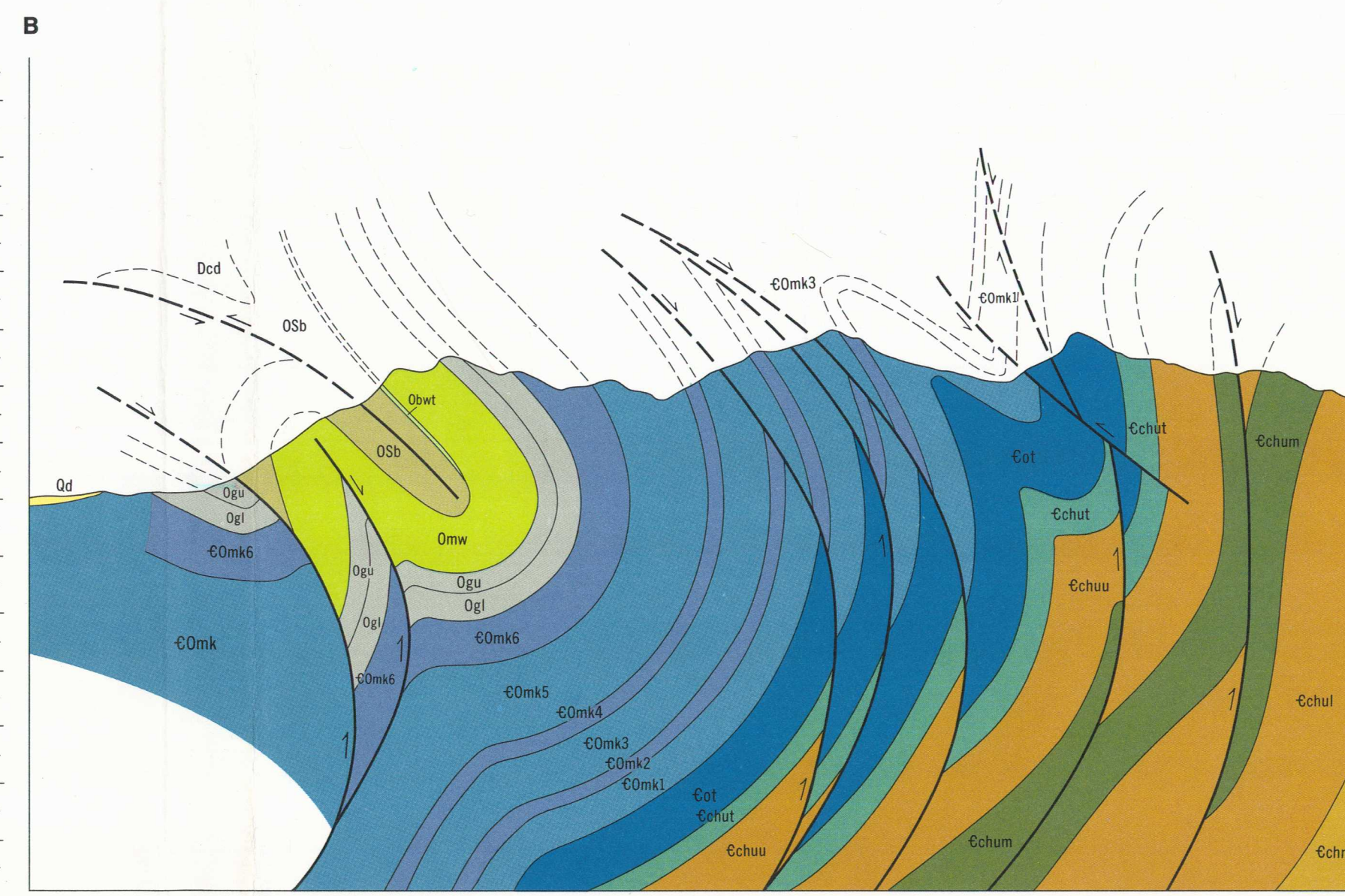
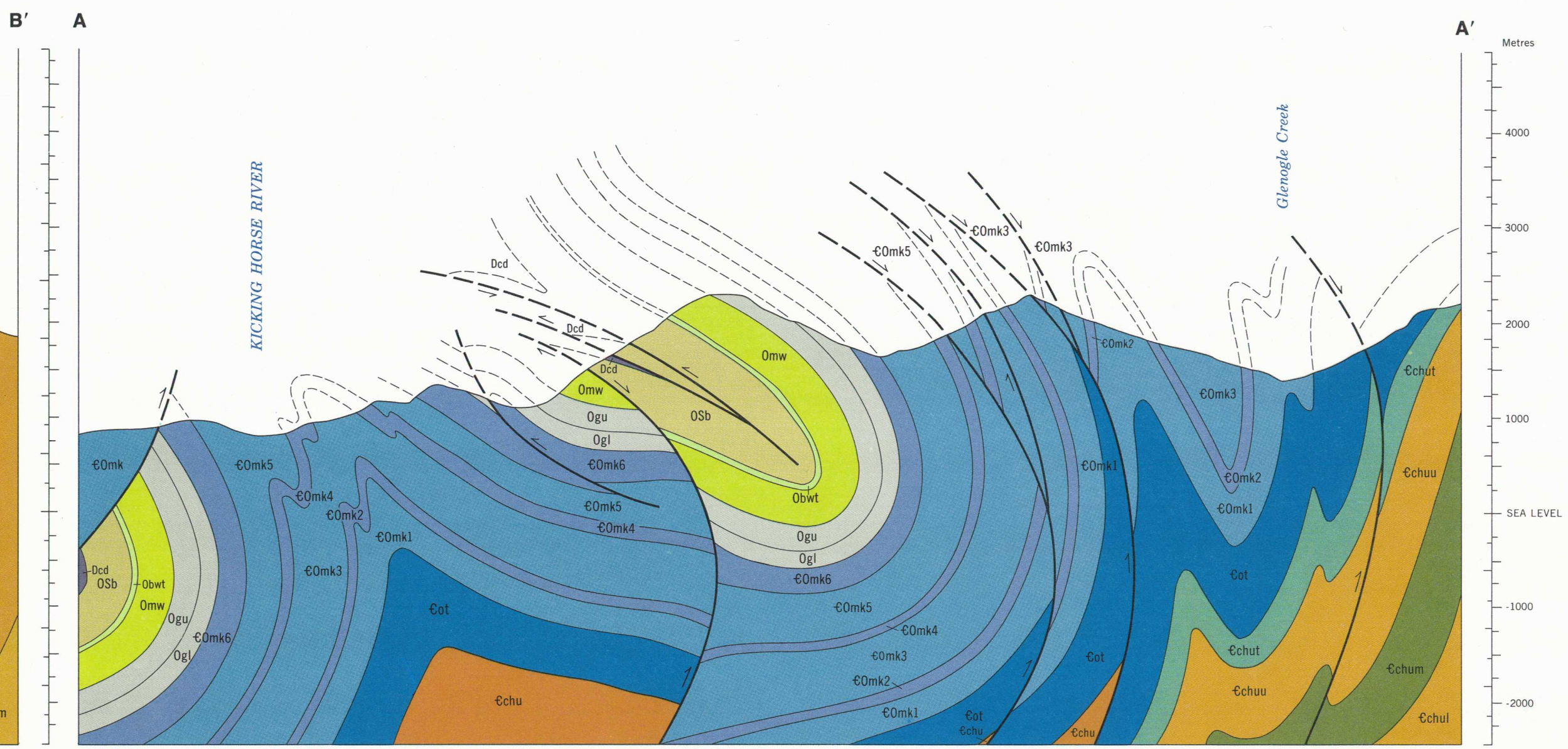


Section 7

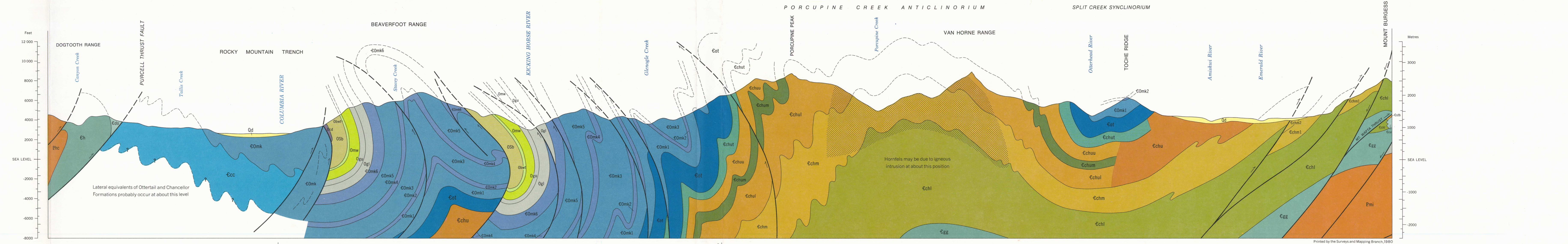
MAP 1497A MAP 1496A



Section B-B'



Section A-A'



Section 6

MAP 1502A MAP 1497A

MAP 1497A MAP 1496A

Diagrammatic structure sections 6, 7, A-A' and B-B' to accompany Map 1496A, Golden (East Half) and Map 1497A, Golden (West Half)

Scale 1:50,000

Geological drafting by G. S. Whitman, Institute of Sedimentary and Petroleum Geology, Geological Survey of Canada

Printed by the Surveys and Mapping Branch, 1980

This map has been reprinted from a scanned version of the original map. Reproduction par numérisation d'une carte sur papier.