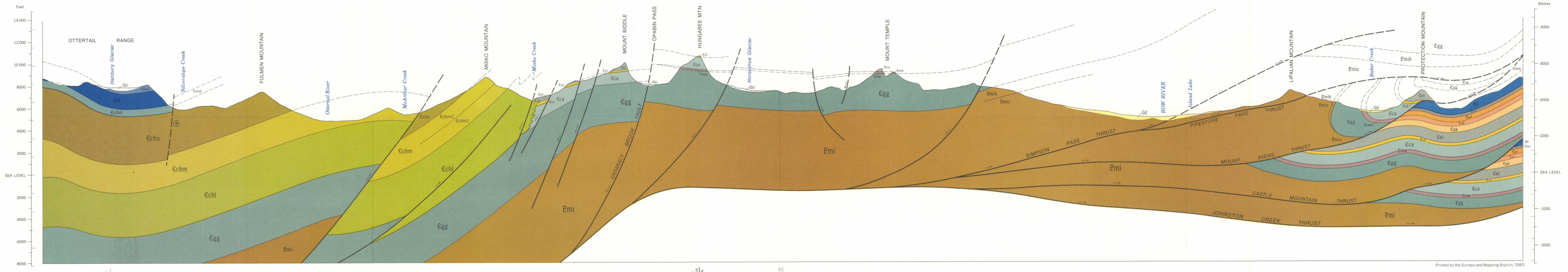


MAP 1483A
 Section 6
 BRITISH COLUMBIA
 ALBERTA



MAP 1477A
 51°15'
 MAP 1483A

BRITISH COLUMBIA
 ALBERTA
 MAP 1483A
 116°15'
 MAP 1482A

Section 5

Diagrammatic structure sections 5 and 6 to accompany Map 1482A, Lake Louise (East Half) and Map 1483A, Lake Louise (West Half)

Scale 1:50,000

Geological cartography by B.H. Ortman, Institute of Sedimentary and
 Petroleum Geology, Geological Survey of Canada

LIBRARY / BIBLIOTHÈQUE

NOV 4 1980

GEOLOGICAL SURVEY
 COMMISSION GÉOLOGIQUE

NOT TO BE TAKEN FROM LIBRARY
 NE PAS SORTIR DE LA BIBLIOTHÈQUE

LAKE LOUISE
 STRUCTURE SECTIONS

1482A-1483A sec.