



LEGEND

VOLCANIC AND SEDIMENTARY ROCKS

QUATERNARY
PLEISTOCENE AND RECENT
22 Till, gravel, sand, and alluvium

TERTIARY
LATE MIOCENE, PLOCENE, AND (?) LATER
21 Volcanic basalt and andesite flows, related breccia and tuff, gravel and sand

PALEOCENE (?), EOCENE AND OLILOCENE (?)
20 Dacite

CRETACEOUS
CENOMANIAN AND (?) LATER
KINGSVALE GROUP (18, 19)
19 Division B: andesitic and basaltic breccia and tuff

18 Division A: siltstone, greywacke, and conglomerate

ALBIAN
JACKASS MOUNTAIN GROUP
17 Greywacke, siltstone, and conglomerate

TAYLOR CREEK GROUP
16 Shale, siltstone, greywacke and pebble conglomerate

Rocks on the North and East Sides of Tyaughton Trough (9, 10)

CRETACEOUS
HAUTERIVIAN AND (?) YOUNGER
15 Reddish to purplish andesitic breccia and tuff

14 Siltstone, greywacke, conglomerate, breccia, quartz sandstone, and limestone

13 Andesitic and basaltic breccia and tuff, minor shale, greywacke, and conglomerate; 13a, metasediments, migmatite; 13b, may be older

12 Siltstone, greywacke, and conglomerate

CRETACEOUS
BERRIAN TO BARREMIAN
RELY MOUNTAIN GROUP (9, 10)
10 Arkose, conglomerate, greywacke, siltstone, conoidal limestone

JURASSIC AND CRETACEOUS
OXFORDIAN TO BERRIASIAN
9 Siltstone, greywacke, conglomerate, and arkose

JURASSIC
KIMMERIDGIAN OR PORTLANDIAN
11 Conglomerate, shale, arkose, greywacke, and tuff

JURASSIC
HETTANGIAN (?), SINEMURIAN, BAJOCIAN, AND CALLOVIAN
8 Siltstone, shale, greywacke, grit, and conglomerate

BAJOCIAN AND (?) CALLOVIAN
7 Volcanic tuff and breccia; minor conglomerate and shale

TRIASSIC
LATE NORIAN AND/OR RHAETIAN
6 Shale, siltstone, greywacke, conglomerate, volcanic breccia, and tuff; 6a, conglomerate, limestone, greywacke; 6b, may be Cretaceous

LATE NORIAN
5 Limestone, shale, and greywacke; 5a, may include some rocks of 6

NORIAN
4 Basalt, andesite, greywacke, siltstone, and conglomerate; 4a, may include some rocks of 1

KARNIAN (?) AND EARLY NORIAN
3 Shale, sandstone, pebble conglomerate; minor shaly limestone; 3a, mainly phyllite and gneiss derived from 1; 1d, could be Hauterivian (map-unit 13)

KARNIAN
2 Limestone, shale, greywacke, tuff and volcanic breccia

1 Dark green andesitic breccia, tuff and flows; minor shale and limestone; 1a, includes some rocks of 2; 1b, phyllitic rocks equivalent to 1; 1c, mainly phyllite and gneiss derived from 1; 1d, could be Hauterivian (map-unit 13)

METAMORPHIC AND PLUTONIC ROCKS

CRETACEOUS OR TERTIARY
LATE CRETACEOUS AND/OR EARLY TERTIARY
COAST PLUTONIC ROCKS: quartz diorite, granodiorite, and diorite; B, possibly older granodiorite

JURASSIC
BATHONIAN (?)
A Quartz-biotite schist and gneiss, augen-gneiss, migmatite, and diorite

- Geological boundary (defined, approximate, assumed)
Limit of geological mapping
Bedding, tops known (inclined, vertical, overturned, dip unknown)
Bedding, tops unknown (inclined, vertical)
Schistosity, gneissosity (horizontal, inclined, vertical)
Fault (defined, approximate, assumed; solid circle indicates down-throw side, arrows indicate relative movement)
Thrust fault (defined, approximate, assumed)
Anticline (defined, approximate; arrow indicates direction of plunge)
Syncline (defined, approximate; arrow indicates direction of plunge)
Anticline and syncline (overturned)
Fossil locality
Mineral occurrence

MINERALS

- Copper Cu Molybdenum Mo
Gold Au Silver Ag
Iron Fe Zinc Zn
Lead Pb

Geology by H.W. Tipper, 1967

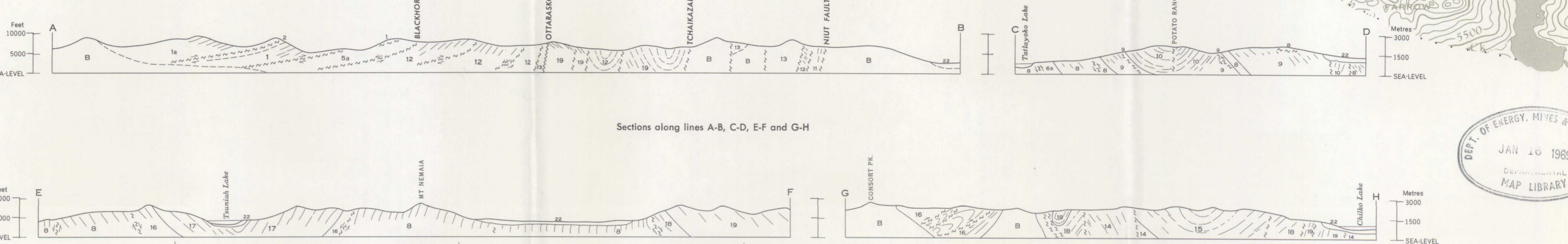
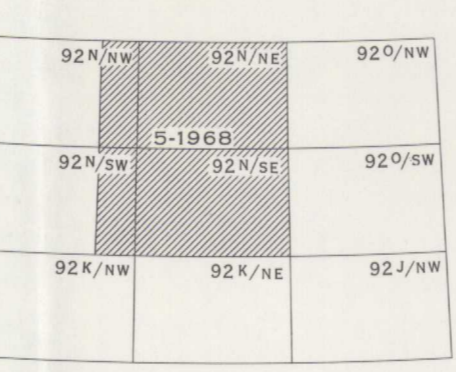
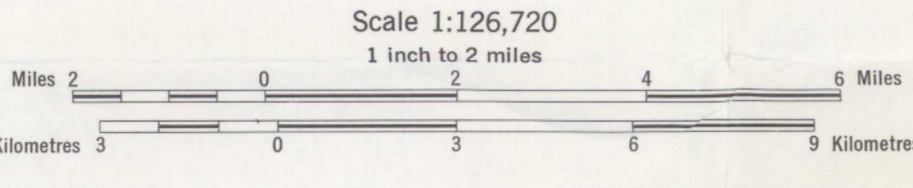
Geological cartography by the Geological Survey of Canada, 1968

Base-map from 1/250,000 scale map produced by the Surveys and Mapping Branch, 1959

Approximate magnetic declination 1968, 24°12' East, decreasing 3.1' annually

Elevations in feet above mean sea-level

GEOLOGICAL SURVEY OF CANADA
DEPARTMENT OF ENERGY, MINES AND RESOURCES
MAP 5-1968
PAPER 68-53
GEOLOGY
MOUNT WADDINGTON
BRITISH COLUMBIA



DEPT. OF ENERGY, MINES & RESOURCES
JAN 10 1969
MAP LIBRARY

ESIC CIST
OCT 8 1996
Earth Sciences Sector / Secteur des sciences de la Terre

MAP LIBRARY / CARTOTHEQUE

MAP 5-1968
MOUNT WADDINGTON
BRITISH COLUMBIA

Handwritten notes: G 3401 .05 1956 G4 omfsc 2961-5