

LEGEND

Note: Map-unit 17 appears on Map 1189A, "Millville" only

- CARBONIFEROUS**
- 17 Recomposed granite (may be younger)
  - 16 Grey conglomerate, sandstone
  - 15 Red conglomerate, sandstone, shale
- DEVONIAN (?)**
- 14 Diabase sills and dykes
  - 13 Granophyre, porphyritic rhyolite, quartz-feldspar porphyry
  - 12 Granite, granodiorite, quartz monzonite, syenite
  - 11 Gabbro, diorite, diabase, quartz diorite; 11a extrusive equivalents
  - 10 Basalt, andesite, may be in part Carboniferous; 10a, intrusive equivalents; 10b, amygdaloidal facies; 10c, porphyritic facies
- DEVONIAN**
- 9 Grey to green sandy slate, sandstone, conglomerate
- SILURIAN AND DEVONIAN (Undivided)**
- 8 Grey to green slate, greywacke; minor conglomerate
- SILURIAN**
- 7 Grey to green slate, greywacke, conglomerate
  - 6 Grey-green, grey, green and red slate, sandstone, greywacke; manganese iron-formation; minor green-grey calcareous slate, limestone
  - 5 Grey to green slate, sandstone, greywacke; minor dark grey calcareous slate, conglomerate, limestone
  - 4 Dark grey calcareous slate; minor slate and siltstone
  - 3 Grey fine-grained greywacke, grey and dark grey slate; 3a, metamorphosed equivalents; hornfels
- CAMBRO-ORDOVICIAN**
- 2 Grey to green slate, greywacke, argillite; 2a, includes basic lava
  - 1 Mica schist, gneiss, hornfels; in part metamorphosed equivalents of 2

- Rock outcrop .....  
 Bedding, tops known (horizontal, inclined, vertical) .....  
 Bedding, tops unknown (inclined, vertical, dip unknown) .....  
 Cleavage (inclined, vertical, dip unknown) .....  
 Fault (defined, assumed; arrow indicates dip) .....  
 Glacial striae .....  
 Esker .....  
 Fossil locality and number .....  
 Quarry .....  
 Mineral occurrence .....

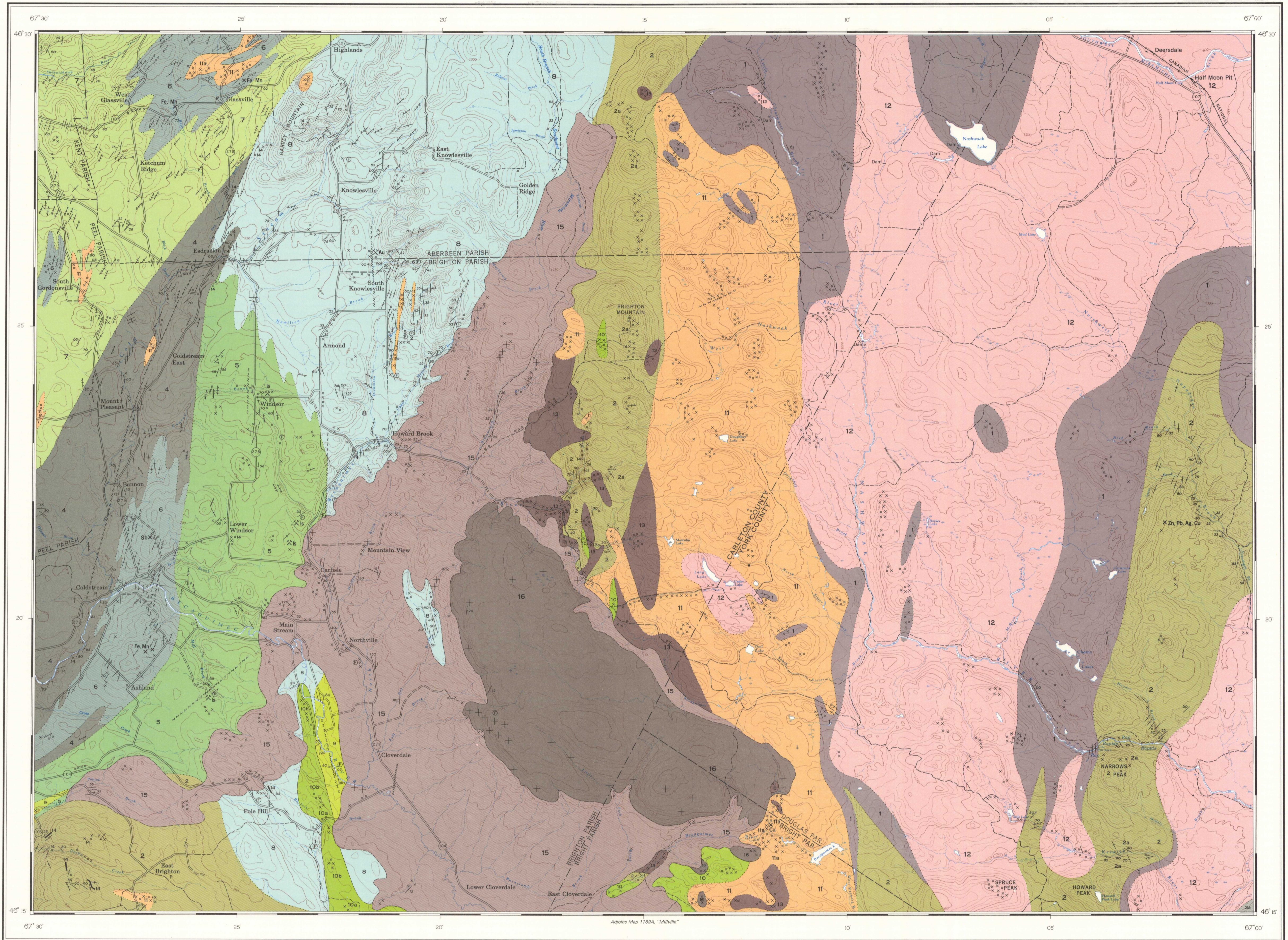
**MINERALS**

Copper ..... Cu	Limestone ..... ls
Gold ..... Au	Manganese ..... Mn
Iron ..... Fe	Silver ..... Ag
Lead ..... Pb	Zinc ..... Zn

Geology by F. D. Anderson, 1953, 1954, 1955

To accompany G.S.C. Memoir 353 by F. D. Anderson

Geological cartography by the Geological Survey of Canada, 1966

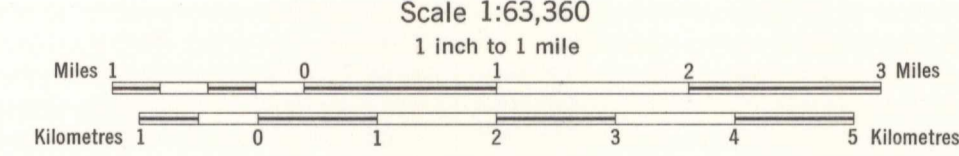


Published 1987, the Centennial of Canadian Confederation



INDEX MAP

MAP 1191A  
 GEOLOGY  
 COLDSTREAM  
 NEW BRUNSWICK



Approximate magnetic declination, 21° 21' West, decreasing 2.3' annually

LIBRARY / BIBLIOTHÈQUE  
 MAR 17 1981  
 GEOLOGICAL SURVEY  
 COMMISSION GÉOLOGIQUE

G3401-05  
 1910-  
 64  
 Ommc

REFERENCE

- Road, all weather ..... Route 60
- Other roads .....
- Cart track .....
- Trail or portage .....
- Railway .....
- Post Office .....
- Horizontal control point .....
- County boundary .....
- Parish boundary .....
- Gravel pit .....
- Intermittent stream .....
- Marsh .....
- Rock or small island .....
- Contours (interval 50 feet) .....

Base-map compiled and drawn by the Surveys and Mapping Branch, 1956 with revisions by the Surveys and Mapping Branch, 1966

NOT TO BE  
 NE PAS SORTIR DE LA BIBLIOTHÈQUE

1191A