



LEGEND

Note: Map-units 7, 8, 9, 13 and 16 appear on Map 1191A, "Coldstream" only, Map-units 4 and 6 appear on Map 1191A, "Coldstream", and Map 1190A, "Woodstock" only

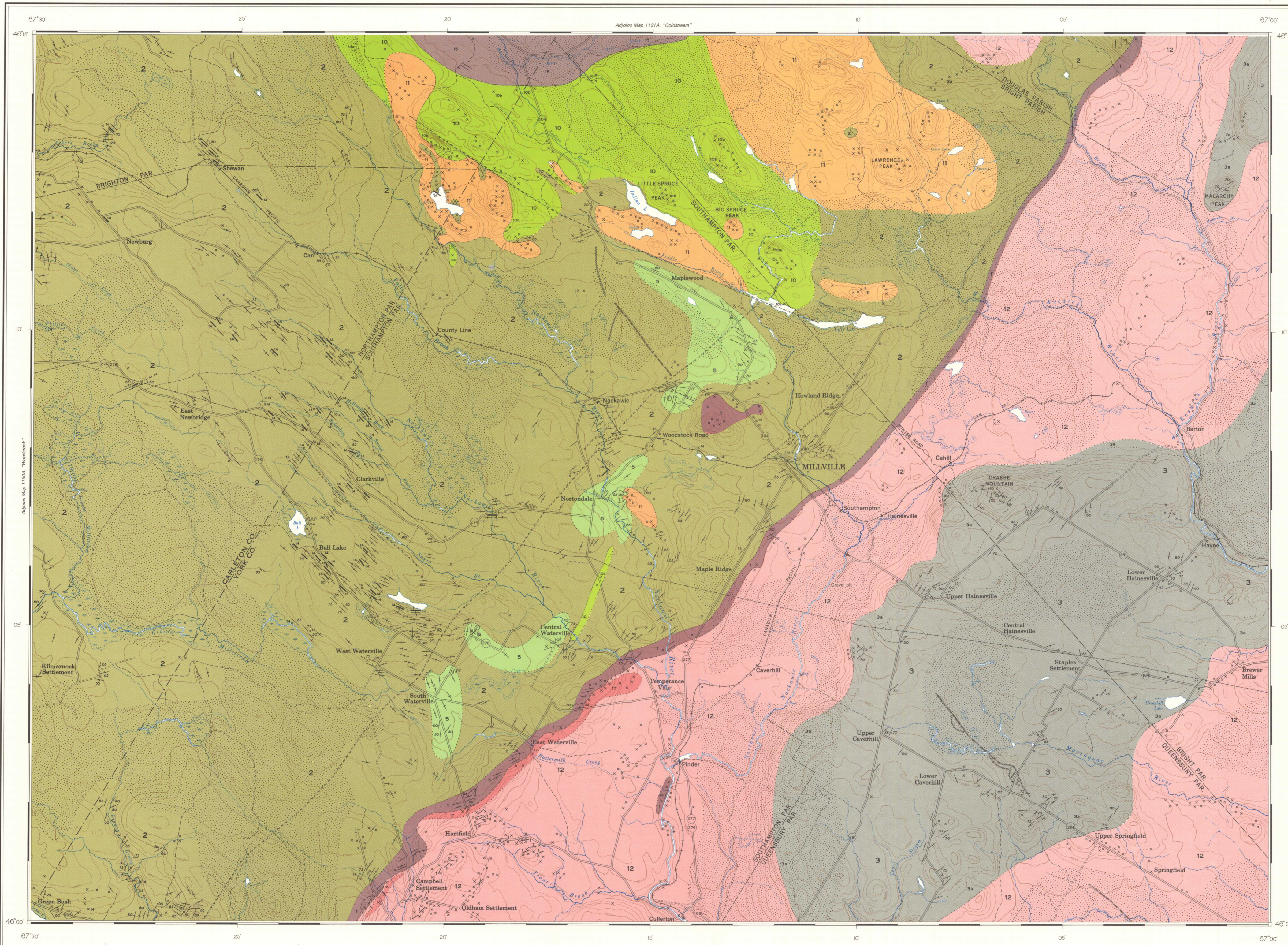
- CARBONIFEROUS**
- 17 Recomposed granite (may be younger)
  - 16 Grey conglomerate, sandstone
  - 15 Red conglomerate, sandstone, shale
- DEVONIAN (?)**
- 14 Diabase sills and dykes
  - 13 Granophyre, porphyritic rhyolite, quartz-feldspar porphyry
  - 12 Granite, granodiorite, quartz monzonite, syenite
  - 11 Gabbro, diorite, diabase, quartz diorite; 11a, extrusive equivalents
  - 10 Basalt, andesite, may be in part Carboniferous; 10a, intrusive equivalents; 10b, amygdaloidal facies; 10c, porphyritic facies
- DEVONIAN**
- 9 Grey to green sandy slate, sandstone, conglomerate
- SILURIAN AND DEVONIAN (Undivided)**
- 8 Grey to green slate, greywacke; minor conglomerate
- SILURIAN**
- 7 Grey to green slate, greywacke, conglomerate
  - 6 Grey-green, grey, green and red slate, sandstone, greywacke; manganiferous iron-formation; minor green-grey calcareous slate, limestone
  - 5 Grey to green slate, sandstone, greywacke; minor dark grey calcareous slate, conglomerate, limestone
  - 4 Dark grey calcareous slate; minor slate and siltstone
  - 3 Grey fine-grained greywacke, grey and dark grey slate; 3a, metamorphosed equivalents; hornfels
- CAMBRO-ORDOVICIAN**
- 2 Grey to green slate, greywacke, argillite; 2a, includes basic lava
  - 1 Mica schist, gneiss, hornfels; in part metamorphosed equivalents of 2

- Drift-covered area
- Rock outcrop
- Bedding, tops known (inclined, vertical)
- Bedding, tops unknown (inclined, vertical, dip unknown)
- Cleavage (inclined, vertical, dip unknown)
- Fault (defined, approximate, assumed; arrow indicates dip)
- Shear zone
- Glacial striae
- Esker
- Fossil locality
- Quarry (limestone, ls)

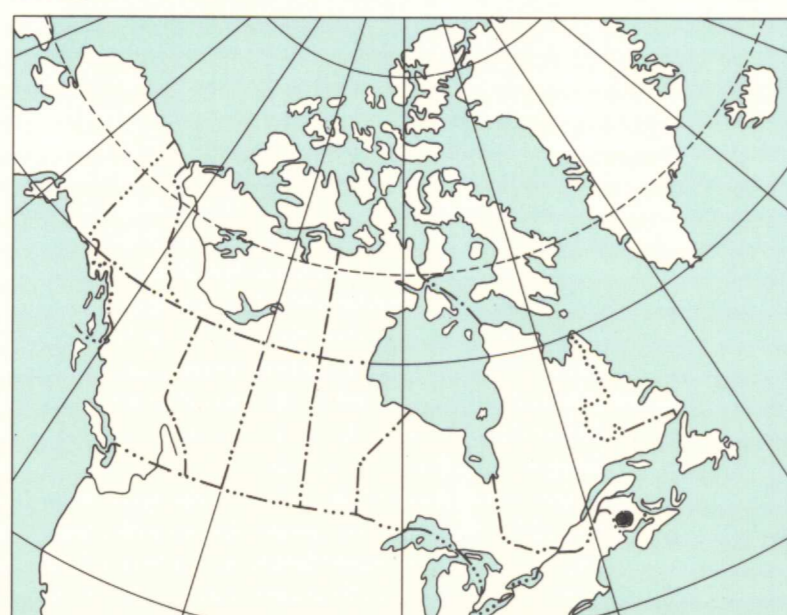
Geology by F. D. Anderson, 1950, 1951

To accompany G.S.C. Memoir 353 by F. D. Anderson

Geological cartography by the Geological Survey of Canada, 1966



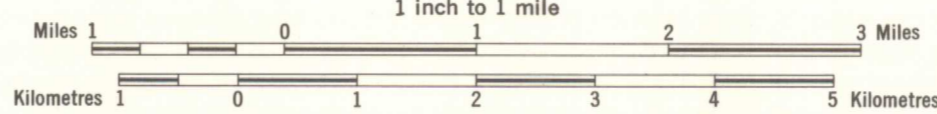
Published 1967, the Centennial of Canadian Confederation



INDEX MAP

MAP 1189A  
GEOLOGY  
MILLVILLE  
NEW BRUNSWICK

Scale 1:63,360  
1 inch to 1 mile



Approximate magnetic declination 21° 10' West, decreasing 2.2' annually

NOT TO BE TAKEN FROM LIBRARY  
NE PAS SORTIR DE LA BIBLIOTHEQUE

REFERENCE

- Road, all weather
- Other roads
- Trail or portage
- Railway
- Power transmission line
- Post Office
- Horizontal control point
- County boundary
- Parish boundary
- Intermittent stream
- Rapids
- Marsh
- Contours (interval 50 feet)
- Depression Contours

Base map compiled and drawn by the Surveys and Mapping Branch, 1954 with revisions by the Geological Survey of Canada, 1966

