

LEGEND

Note: Map-units 7, 8, 9, 13 and 16 appear on Map 1191A, "Coldstream" only. Map-unit 17 appears on Map 1193A, "Millville" only. Map-unit 3 appears on Map 1191A, "Coldstream", and Map 1193A, "Millville" only.

- CARBONIFEROUS**
- 17 Recomposed granite (may be younger)
 - 16 Grey conglomerate, sandstone
 - 15 Red conglomerate, sandstone, shals.
- DEVONIAN (?)**
- 14 Diabase sills and dykes
 - 13 Granophyre, porphyritic rhyolite, quartz-feldspar porphyry
 - 12 Granite, granodiorite, quartz monzonite, syenite
 - 11 Gabbro, diorite, diabase, quartz diorite; 11a, extrusive equivalents
 - 10 Basalt, andesite, may be in part Carboniferous; 10a, intrusive equivalents; 10b, amygdaloidal facies; 10c, porphyritic facies
- DEVONIAN**
- 9 Grey to green sandy slate, sandstone, conglomerate
- SILURIAN AND DEVONIAN (Undivided)**
- 8 Grey to green slate, greywacke; minor conglomerate
- SILURIAN**
- 7 Grey to green slate, greywacke, conglomerate
 - 6 Grey-green, grey, green and red slate; sandstone, greywacke; manganese iron-formation; minor green-grey calcareous slate, limestone
 - 5 Grey to green slate, sandstone, greywacke; minor dark grey calcareous slate, conglomerate, limestone
 - 4 Dark grey calcareous slate; minor slate and siltstone
 - 3 Grey fine-grained greywacke, grey and dark grey slate; 3a, metamorphosed equivalents; hornfels
- CAMBRO-ORDOVICIAN**
- 2 Grey to green slate, greywacke, argillite; 2a, includes basic lava
 - 1 Mica schist, gneiss, hornfels; in part metamorphosed equivalents of 2

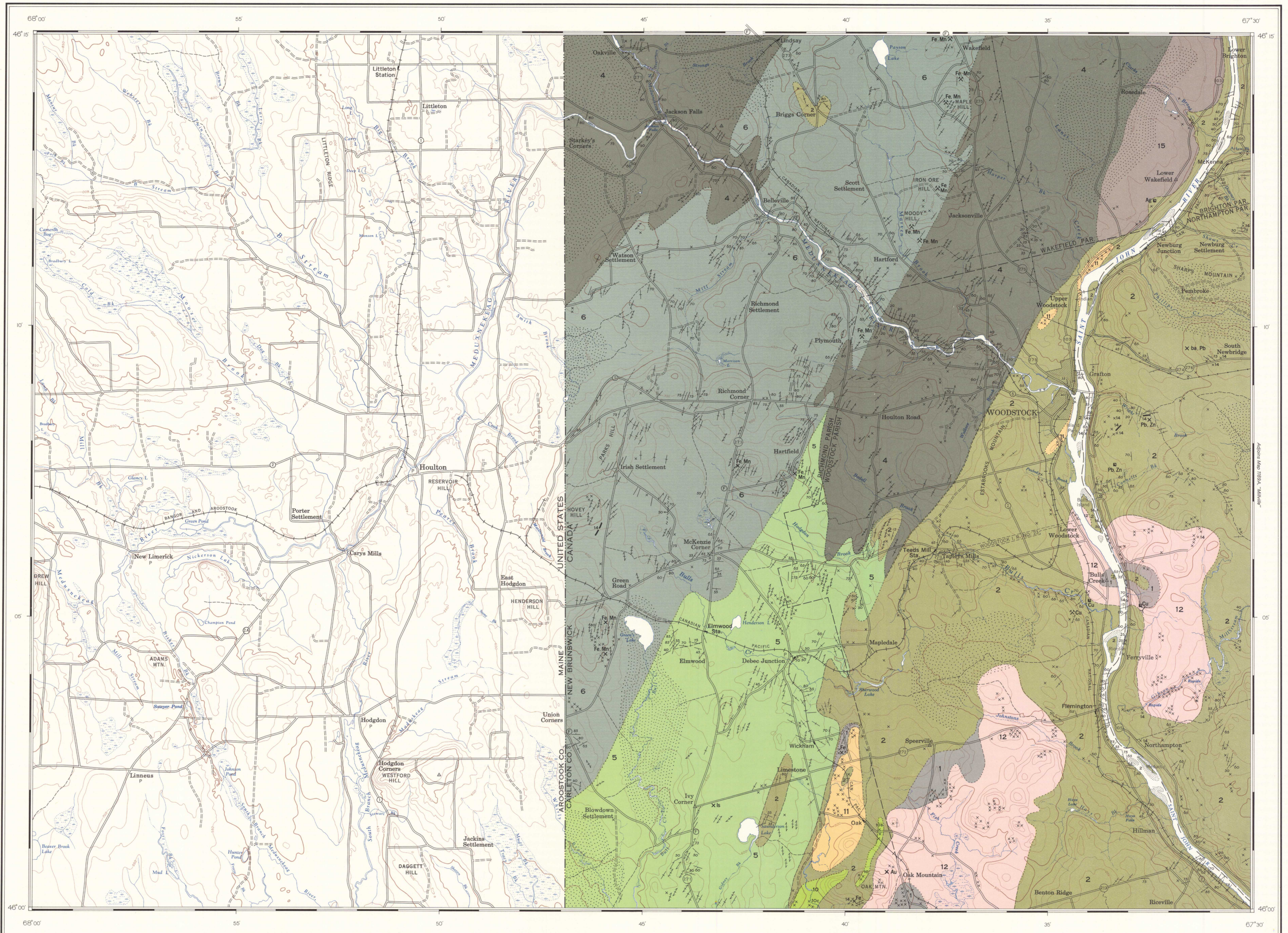
- Drift-covered area
- Rock outcrop
- Bedding, tops known (horizontal, inclined, vertical)
- Bedding, tops unknown (inclined, vertical, dip unknown)
- Cleavage (inclined, vertical, dip unknown)
- Fault (defined, approximate, assumed; arrow indicates dip)
- Glacial striae
- Fossil locality
- Quarry
- Mineral occurrence
- Shaft
- Adit

MINERALS	
Bariteba	Limestonels
Coppercu	Manganesemn
Goldau	Silverag
Ironfe	Zinczn
Leadpb	

Geology by F. D. Anderson, 1951, 1952

To accompany G.S.C. Memoir 353 by F. D. Anderson

Geological cartography by the Geological Survey of Canada, 1966



Published 1967, the Centennial of Canadian Confederation

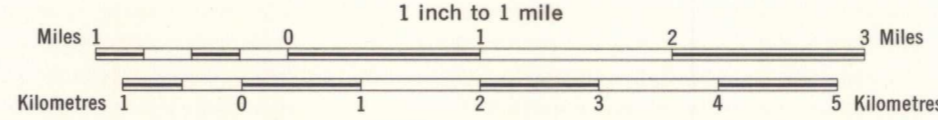


INDEX MAP

MAP 1190A
GEOLOGY
WOODSTOCK
NEW BRUNSWICK

Scale 1:63,360

1 inch to 1 mile



Approximate magnetic declination, 20° 44' West, decreasing 2' annually

NOT TO BE TAKEN FROM LIBRARY
NE PAS SORTIR DE LA BIBLIOTHÈQUE

REFERENCE

- Road, all weather
- Other roads
- Trail or portage
- Railway
- Power transmission line
- Post Office
- Horizontal control point
- International boundary
- County boundary
- Parish boundary
- Indian Reserve boundary
- Gravel pit
- Intermittent stream
- Marsh
- Foreshore flats
- Rock or small island
- Contours (interval 50 feet)

Base-map compiled and drawn by the Surveys and Mapping Branch, 1954 with revisions by the Geological Survey of Canada, 1966

