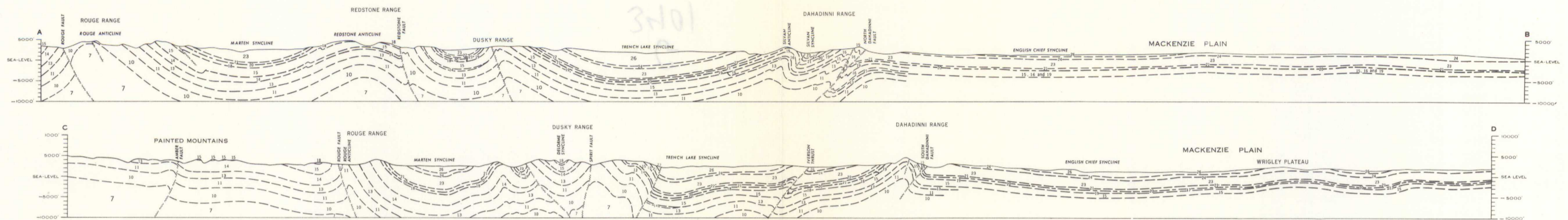


GEOLOGICAL SURVEY OF CANADA
DEPARTMENT OF MINES AND TECHNICAL SURVEYS



LEGEND

Note: Weighted legend blocks indicate map-units that appear on this map

- PLEISTOCENE AND RECENT**
 - 28 Alluvial sands, silts and muds of Mackenzie River
- CRETACEOUS**
 - 27 Shale and sandstone
- DEVONIAN**
 - UPPER DEVONIAN**
 - 26 Shale, grey, green, red; siltstone and sandstone, fine-grained, greenish grey; limestone, fossiliferous
 - 25 Limestone, massive-bedded, reefy
 - 24 Sandstone, calcareous, fine-grained, greenish grey; shale, grey and greenish grey
 - 23 FORT SIMPSON FORMATION: shale and mudstone, grey; siltstone and sandstone (may include HORN RIVER FORMATION)
 - MIDDLE DEVONIAN**
 - 22 HORN RIVER FORMATION: shale, black, pyritic, sulphur-stained
 - 21 NAHANNI FORMATION: limestone, fine- to coarse-grained, grey, medium- to thick-bedded (may include HEADLESS FORMATION)
 - 20 HEADLESS FORMATION: limestone, argillaceous, grey
 - DEVONIAN OR OLDER**
 - 19 LANDRY FORMATION: limestone, cryptocrystalline, grey
 - 18 MANTOE FORMATION: dolomite, coarse-grained, grey, porous (equivalent to parts of 16, 18 and 19)
 - 17 ARNICA FORMATION: dolomite, crypto- to fine-grained, banded grey and dark grey
 - 16 FUNERAL FORMATION: limestone, argillaceous, fine-grained (equivalent to parts of 15, 17 and 18)
 - 15 BEAR ROCK FORMATION: massive brecciated dolomite and limestone; anhydrite (equivalent to 15, 17, 18 and 19)
- DEVONIAN OR OLDER**
 - 14 SOMBRE FORMATION: dolomite, crypto- to fine-grained, banded grey and light grey
 - 13 CAMSELL FORMATION: massive breccia, cryptocrystalline grey limestone; yellow and orange weathering
- ORDOVICIAN AND YOUNGER**
 - 12 DELORME FORMATION: limestone and dolomitic limestone, fine-grained, grey, buff weathering
 - 11 WHITTAKER FORMATION: dolomite, fine- to medium-grained, grey (may include equivalents of 8 and 9)
 - 10 MOUNT KINDLE FORMATION: dolomite, fine- to medium-grained, grey, porous
 - 9 FRANKLIN MOUNTAIN FORMATION: dolomite, fine-grained, grey to brown
- ORDOVICIAN? OR OLDER**
 - 7 Dolomite, silty and sandy, fine-grained, pink to grey, reddish buff weathering
- CAMBRIAN**
 - 6 MOUNT CAP AND SALINE RIVER FORMATIONS: shale, green, red and buff; salt and gypsum
 - 5 MOUNT CLARK FORMATION: sandstone, fine-grained, white, crossbedded
- PROTEROZOIC**
 - 4 LONE LAND FORMATION: sandstone, fine-grained, hematitic; conglomerate; mudstone
 - 3 Shale, dusky red and olive green; siltstone and sandstone
 - 2 Shale, dusky red; siltstone, thinly bedded
 - 1 Sandstone, fine-grained, green; siltstone; dolomite, cryptocrystalline, green and brown; shale, dusky red and green

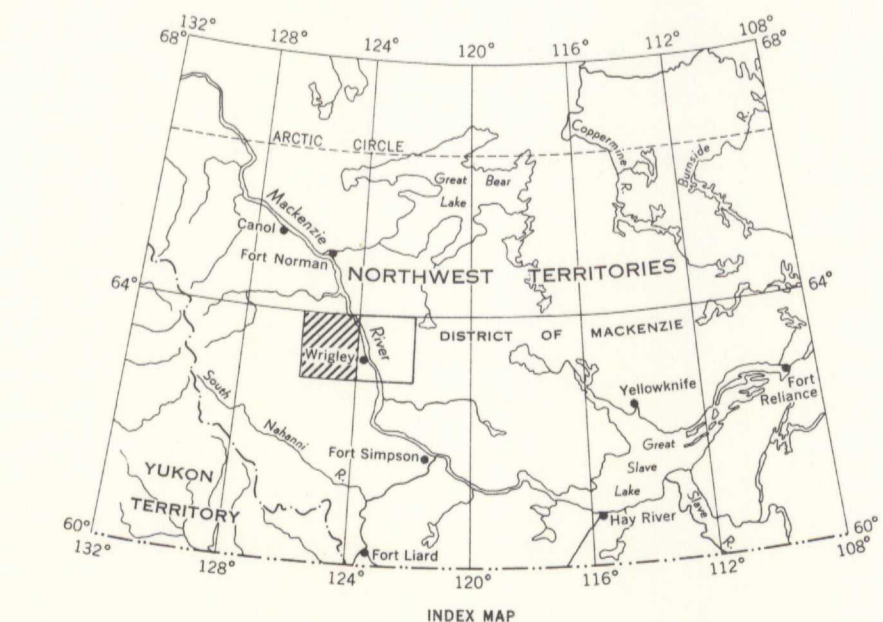
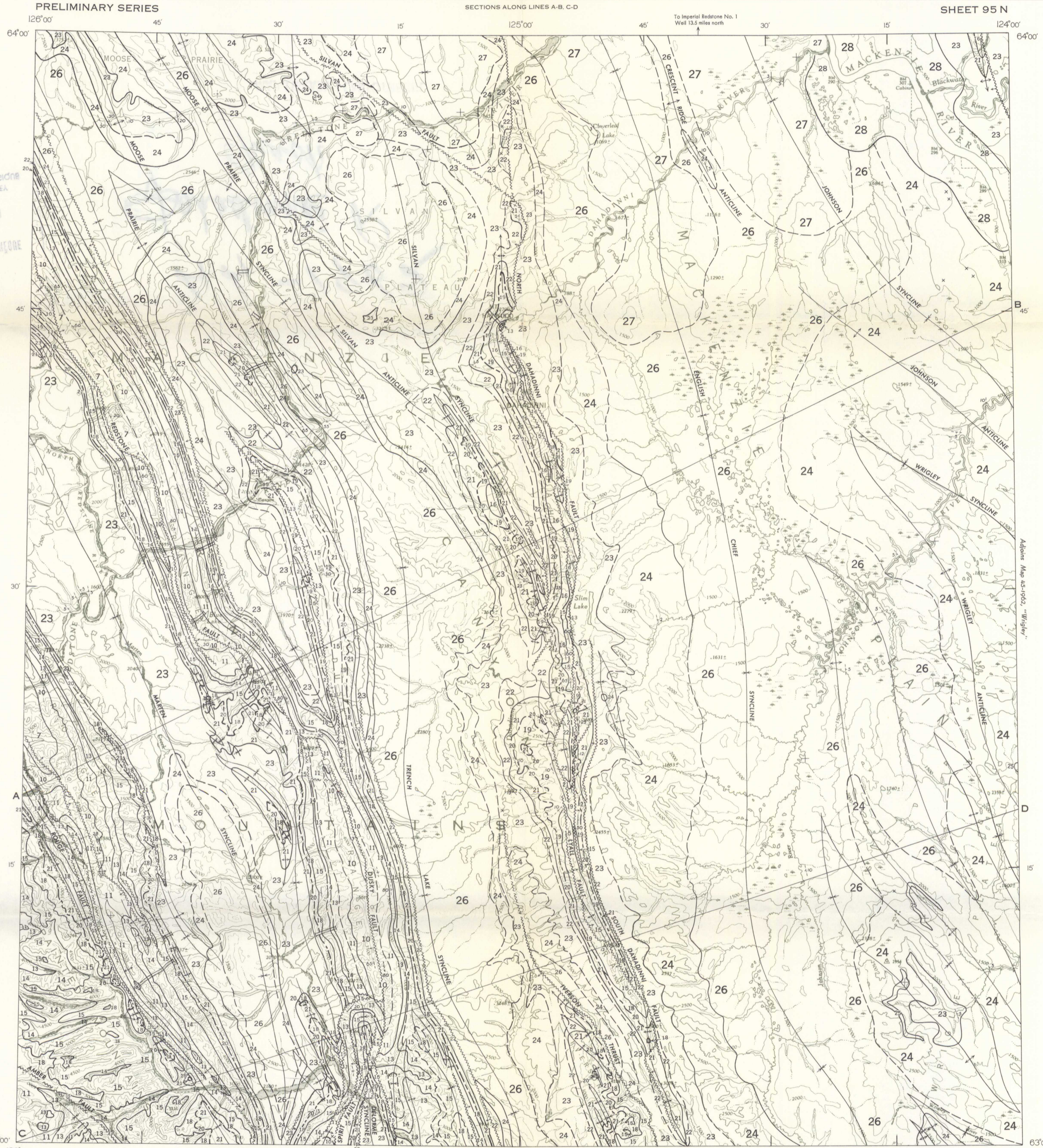
- Rock outcrop x
- Geological boundary (approximate and assumed, uncontrolled) - - - - -
- Limit of geological mapping (Wrigley only) - - - - -
- Bedding, measured (horizontal, inclined, vertical) + / -
- Bedding, estimated (horizontal, inclined, vertical) + / -
- Fault (approximate, assumed, arrow indicates direction of dip) - - - - -
- Fault (downthrown side indicated) - - - - -
- Lineament or small fault - - - - -
- Anticline, plunging - - - - -
- Syncline, plunging - - - - -
- Location of measured stratigraphic sections - - - - -

Geology by W. B. Brady, R. J. W. Douglas, P. Harker, D. J. McLaren, A. W. Norris, D. K. Norris, B. R. Pelletier, D. F. Stott 1957

Compiled by R. J. W. Douglas and D. K. Norris, 1961

Cartography by the Geological Survey of Canada, 1962

Mean magnetic declination, 36° 54' East, decreasing 5.3' annually. Readings vary from 35° 48' E in the SW corner to 37° 34' E in the NE corner of the map area



MAP 44-1962
TO ACCOMPANY PAPER 62-33
GEOLOGY
DAHADINNI RIVER
DISTRICT OF MACKENZIE

Scale: One Inch to Four Miles = $\frac{1}{253,440}$
Miles

- LEGEND
- Winter road - - - - -
 - Cut line - - - - -
 - Post Office P
 - Intermittent stream - - - - -
 - Marsh - - - - -
 - Contours (interval 500 feet) - - - - -
 - Height in feet above mean sea-level 2750

Base-map by the Army Survey Establishment, R. C. E., Dept. of National Defence, 1952-59

MANUSCRIPTS UNIT
FEB 28 1963
G.S.C.

MAP 44-1962
DAHADINNI RIVER
DISTRICT OF MACKENZIE
SHEET 95 N