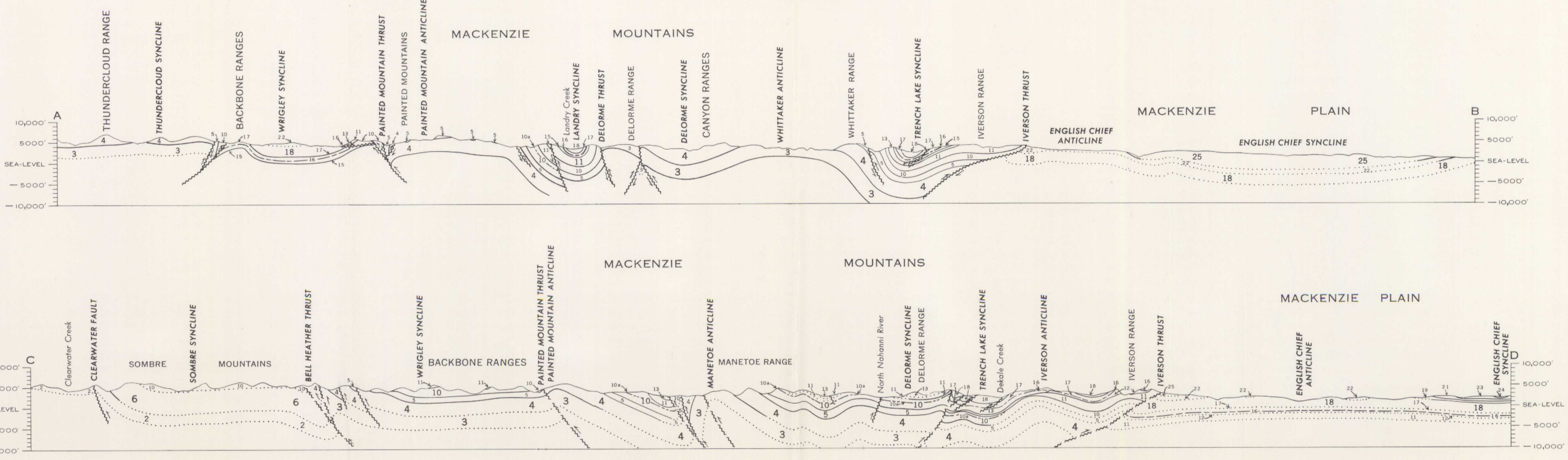




GEOLOGICAL SURVEY OF CANADA
DEPARTMENT OF MINES AND TECHNICAL SURVEYS



SECTIONS ALONG LINES A-B, C-D

PRELIMINARY SERIES

SHEET 95K

LEGEND

Map-units 7, 8, 9, 11, 12, 14, 16 to 28 appear on Map 22-1961, Camsell Bend
Map-units 1 to 6, 10 to 13, 15 to 26 appear on Map 23-1961, Root River

- CENOZOIC**
 - PLEISTOCENE AND RECENT
 - 28 Alluvial sands, silts and muds of Mackenzie and lower North Nahanni Rivers
 - CRETACEOUS
 - 27 Shale, dark grey, concretionary, gypsiferous
 - MISSISSIPPIAN (?)
 - 26 Shale, grey, compact
 - DEVONIAN
 - UPPER DEVONIAN
 - 24 Siltstone and shale, green to reddish brown, limestone, argillaceous
 - 23 Shale, grey and green
 - 21 Sandstone, calcareous; siltstone; shale, olive grey
 - 20 Limestone, massive, reefy
 - 19 Sandstone, siltstone, shale, olive grey, silty
 - 18 FORT SIMPSON FORMATION: shale and mudstone, grey; limestone, siltstone (may include Horn River Formation)
 - MIDDLE DEVONIAN
 - 17 NAHANNI FORMATION: limestone, fine-to medium-grained, grey
 - 16 HEADLESS FORMATION: limestone, argillaceous; shale, calcareous
 - 15 LANDRY FORMATION: limestone, crypto-to medium-grained, grey
 - 12 MANETOE FORMATION: dolomite, coarsely crystalline, grey
 - 11 ARNICA FORMATION: dolomite, crypto-to fine-grained; banded dark grey and black weathering
 - 10 SOMBRE FORMATION: dolomite, crypto-to fine-grained; banded, light grey weathering; 100' dark weathering band
 - 9 Dolomite, fine-grained, silty dolomite; sandstone; buff weathering
 - 8 Dolomite, fine-grained, grey, massive; grey weathering
 - 7 MT. KINDLE FORMATION: dolomite, grey, massive
 - 6 Dolomite, fine-grained; limestone; banded buff weathering
 - 5 CAMSELL FORMATION: breccia, limestone, grey, yellow, orange weathering
 - 4 DELOIRME FORMATION: dolomite, limestone, siltstone, fine-grained, shale, grey; buff weathering
 - 3 WHITTAKER FORMATION: limestone, dark grey; dolomite, massive; shale, calcareous; grey weathering
 - 2 Limestone, dark grey; dolomite, massive; shale, grey weathering
 - 1 SUNBLOOD FORMATION: limestone, dark grey; dolomite, sandy; sandstone; grey, orange, red weathering
- PALAEZOIC**

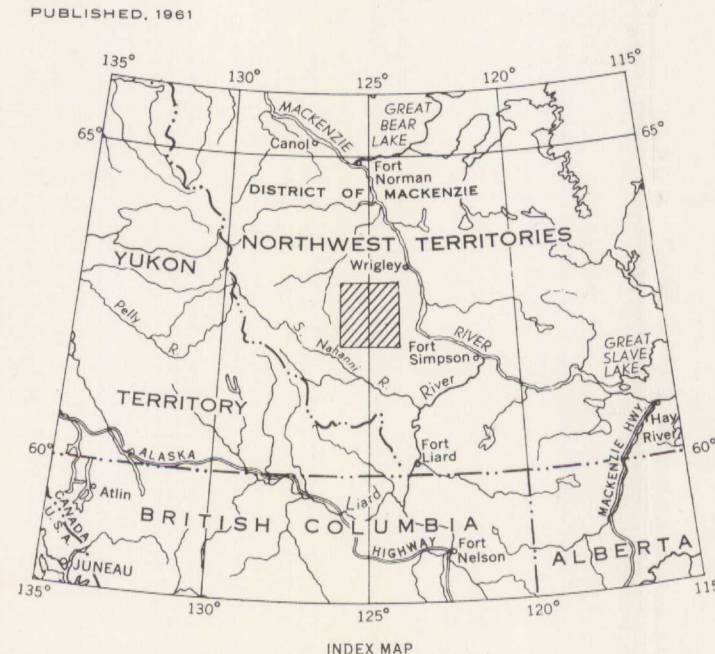
- Rock outcrop
- Geological boundary (mainly assumed, uncontrolled)
- Bedding, measured (horizontal, inclined, vertical)
- Bedding, estimated (horizontal, inclined, vertical)
- Fault (approximate, assumed, arrow indicates relative movement)
- Fault (direction of dip, downthrown side)
- Anticline (defined, approximate, arrow indicates direction of plunge)
- Syncline (defined, approximate, arrow indicates direction of plunge)
- Location of measured stratigraphic sections
- Mineral occurrence (copper, Cu)
- Well (abandoned)

Geology by W. B. Brady, R. J. W. Douglas, P. Harker, D. J. McLaren, A. W. Norris, D. K. Norris, B. R. Pelletier, 1957

Compilation by R. J. W. Douglas and D. K. Norris, 1960

Cartography by the Geological Survey of Canada, 1961

Approximate magnetic declination, 35° 07' East



MAP 23-1961
TO ACCOMPANY PAPER 61-13
GEOLOGY
ROOT RIVER
DISTRICT OF MACKENZIE

Scale: One Inch to Four Miles = 1/253,440
Miles

COPIES OF THIS MAP MAY BE OBTAINED FROM THE DIRECTOR, GEOLOGICAL SURVEY OF CANADA, OTTAWA

Air photographs covering this area may be obtained through the National Air Photographic Library, Topographical Survey, Ottawa

ESIC CIST
1967 8 1996
Earth Sciences Sector
Secteur des sciences de la Terre

- Intermittent stream
 - Dry river bed, sand
 - Marsh
 - Contours (interval 500 feet)
 - Height in feet above mean sea-level
- Base-map prepared by the Army Survey Establishment, R. C. E., Dept. of National Defence, 1953-1959

Department of Mines and Technical Surveys
GEOGRAPHICAL
SEP 10 1964
BRANCH
MAP LIBRARY

MAP 23-1961
ROOT RIVER
DISTRICT OF MACKENZIE
SHEET 95K

G
3401
.05
1956
G4
cmvfc
23-1961
2-2