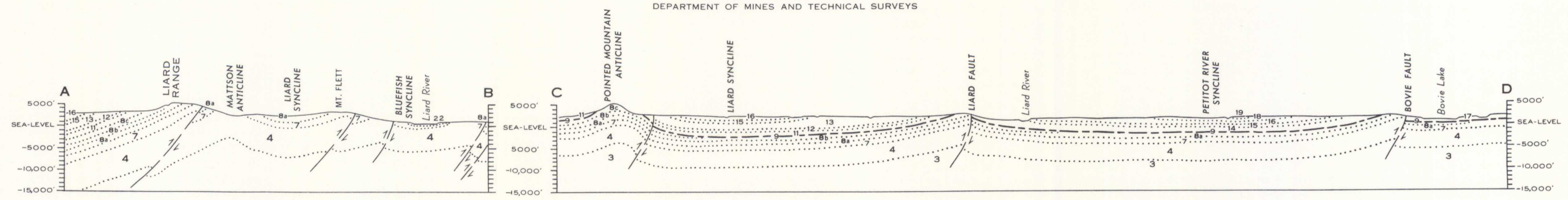




GEOLOGICAL SURVEY OF CANADA
DEPARTMENT OF MINES AND TECHNICAL SURVEYS



SHEET 95B

LEGEND

Map-units 3 to 9, 11 to 20 and 22 appear on Map 31-1959, "Fort Liard"
Map-units 1 to 4, 6 to 16, 18 and 21 appear on Map 32-1959, "La Biche"

- CENOZOIC**
- PLEISTOCENE AND RECENT
 - 22 Alluvial sands and silts of Liard River
 - CRETACEOUS OR LATER
 - 21 Lithology unknown
 - CRETACEOUS
 - UPPER CRETACEOUS
 - 20 WAPITI FORMATION: banded sandstone, thin coal
 - 19 KOTANELEE FORMATION: dark grey, concretionary shale, mudstone, grey sandstone
 - 18 FORT NELSON FORMATION: carbonaceous, sandstone and pebble-conglomerate, dark grey shale, siltstone
 - LOWER CRETACEOUS
 - 17 FORT ST. JOHN GROUP: undivided
 - 16 SIKANNI FORMATION (15-16) Dark grey, concretionary shale, gypsiferous in part
 - 15 Greenish grey sandstone, siltstone, shale
 - 14 BUCKINGHORSE FORMATION: undivided
 - 13 BUCKINGHORSE FORMATION (10-13) Concretionary and rusty weathering shale
 - 12 Greenish-grey sandstone
 - 11 Concretionary and rusty weathering shale, pebble-conglomerate and grey sandstone
 - 10 Dark grey shales; unknown recessive lithology
 - PERMIAN (?)
 - 9 Thick grey chert, grey sandstone, mudstone on section only
 - PERMIAN AND CARBONIFEROUS
 - 8 MATTSON FORMATION: sandstone, shale, limestone (may include map-unit 9); 8a, lower part; grey sandstone, coal; 8b, middle part; grey to brown sandstone; 8c, upper part; grey sandstone, fossiliferous sandstone, shale
 - MISSISSIPPIAN
 - 7 Grey, fossiliferous limestone, grey shale, thin grey sandstone
 - 6 Black shale, thin limestone
 - 5 Brown weathering sandstone, siltstone, shale
 - MISSISSIPPIAN AND DEVONIAN
 - 4 Dark grey shale; sandstone; 4a, may include equivalents of Nahanni Formation, and map-units 5 to 7
 - DEVONIAN
 - MIDDLE DEVONIAN AND EARLIER
 - 3 Grey banded dolomite, granular, porous dolomite, coralliferous limestone (includes Nahanni Formation)
 - 2 Boulder conglomerate
 - PROTEROZOIC (?)
 - 1 Green, laminated argillite

- Rock outcrop
- Geological boundary (approximate, assumed)
- Limit of geological mapping
- Bedding, measured (horizontal, inclined)
- Bedding, estimated (inclined)
- Thrust fault (approximate)
- Anticline
- Syncline
- Well (abandoned)

ABBREVIATION OF WELL NAME

Texaco Northern Foothills Agreement Bovie Lake No. 1 TBL1

Geology by W. B. Brady, R. J. W. Douglas, P. Harker, D. K. Norris, D. F. Stott, 1957

Compiled by D. K. Norris and R. J. W. Douglas, 1959

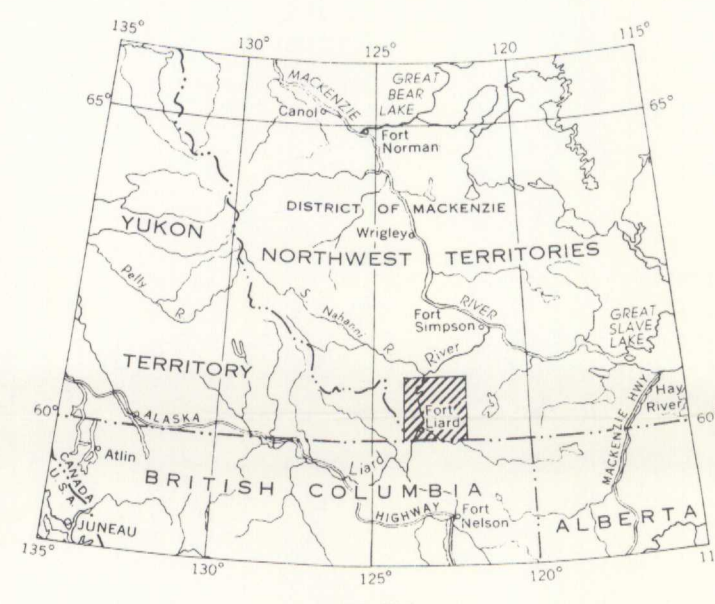
- Provincial boundary
- Intermittent stream
- Marsh
- Contours (interval 500 feet)

Cartography by the Geological Survey of Canada, 1959

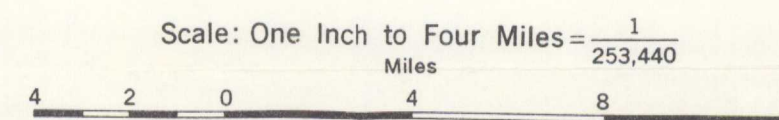
Approximate magnetic declination, 33° 05' East

Geographical names subject to revision

PRELIMINARY SERIES



MAP 31-1959
TO ACCOMPANY PAPER 59-6
GEOLOGY
FORT LIARD
DISTRICT OF MACKENZIE
NORTHWEST TERRITORIES



COPIES OF THIS MAP MAY BE OBTAINED FROM THE DIRECTOR, GEOLOGICAL SURVEY OF CANADA, OTTAWA

Air photographs covering this area may be obtained through the National Air Photographic Library, Topographical Survey, Ottawa, Ontario

MAP 31-1959
FORT LIARD
NORTHWEST TERRITORIES
SHEET 95B

In response to public demand for earlier publication, Preliminary Series maps are now being issued in this simplified form, thereby effecting a substantial saving in time. There is no loss of information, but the maps will be clearer to read if all or some of the map-units are hand-coloured.