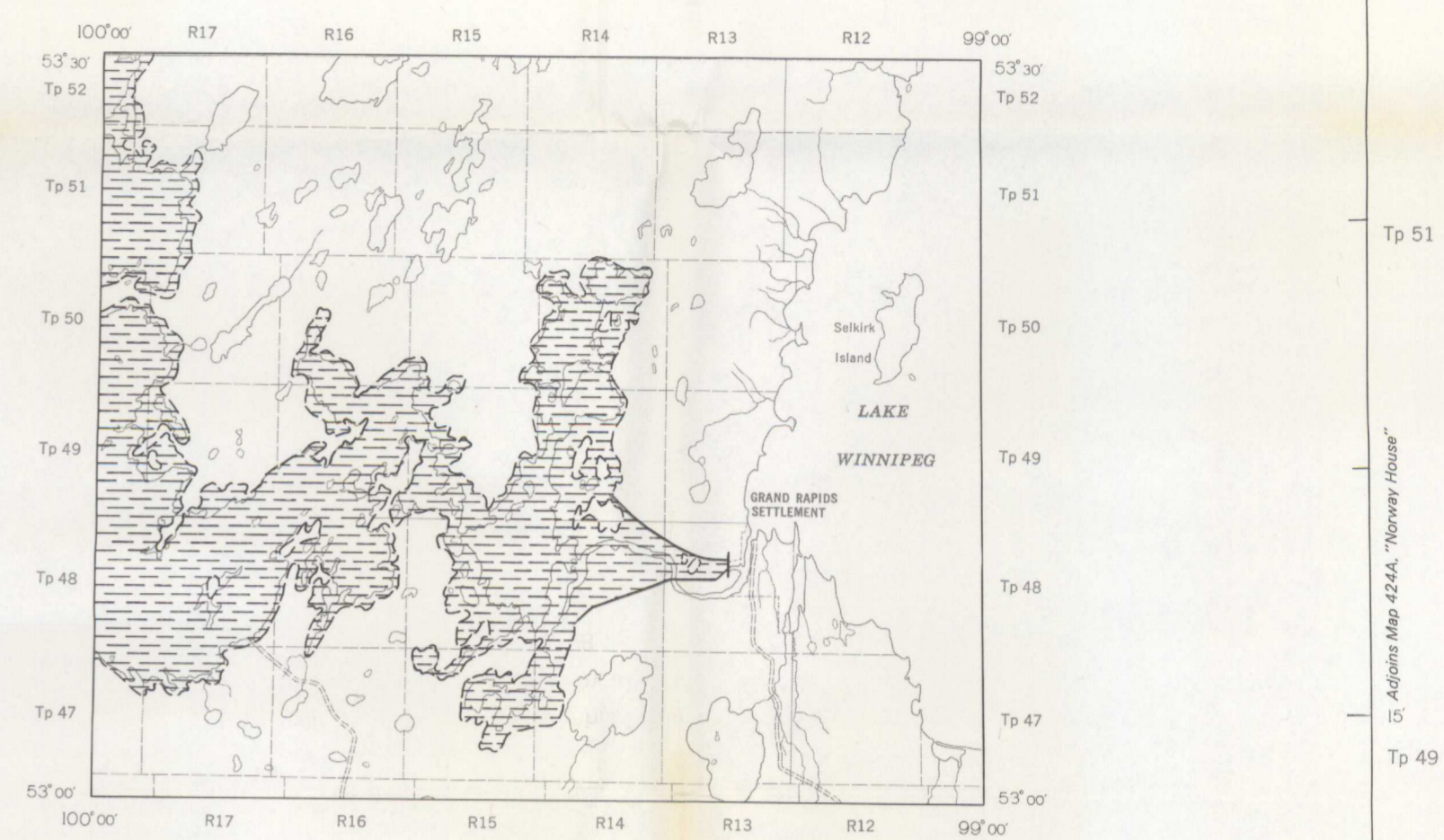
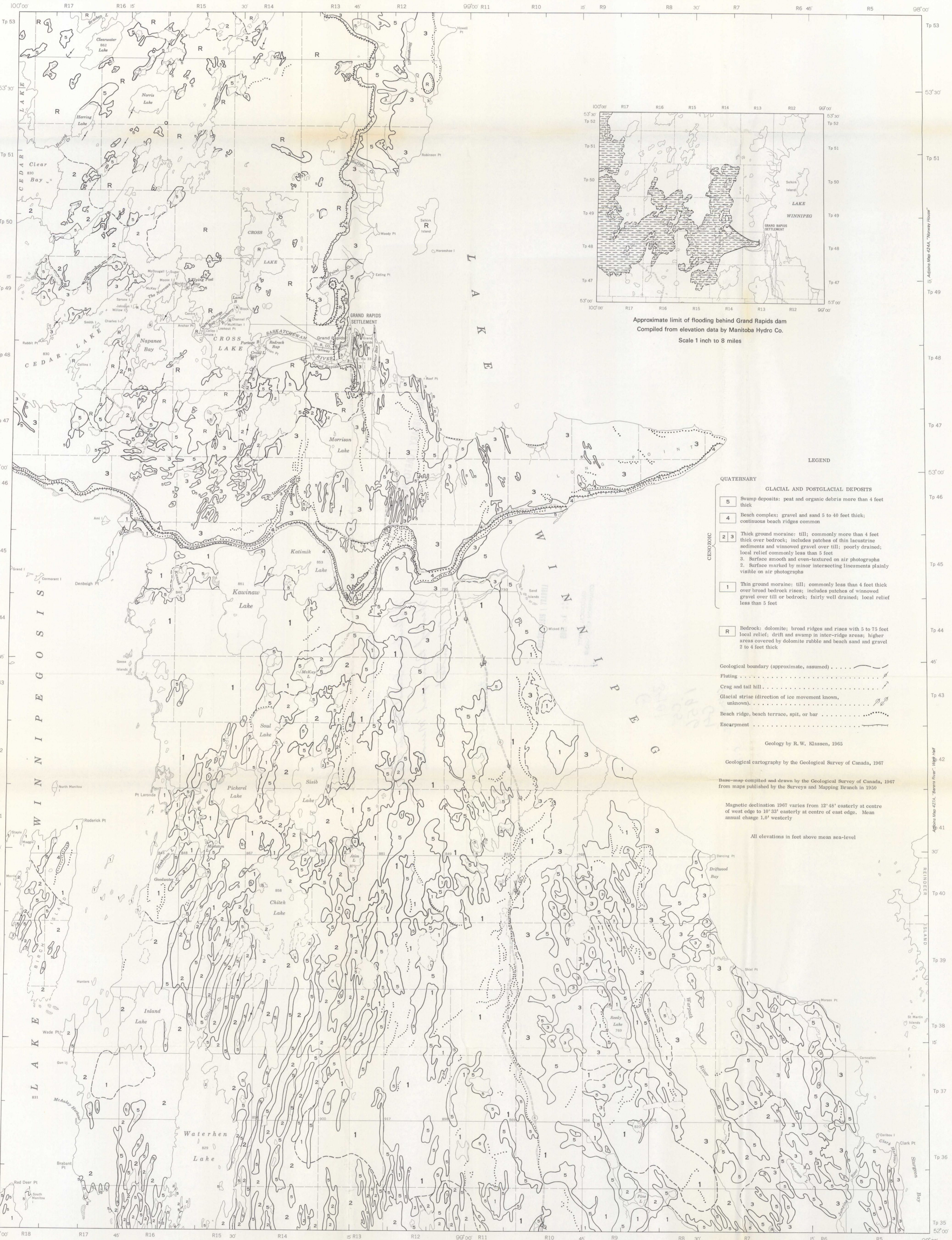




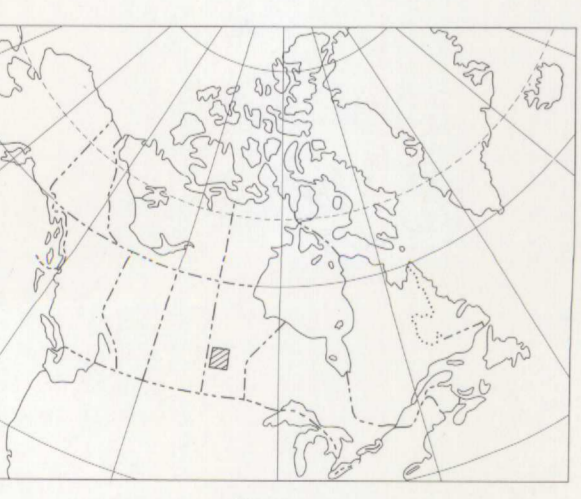
GEOLOGICAL SURVEY OF CANADA
DEPARTMENT OF ENERGY, MINES AND RESOURCES

PRELIMINARY SERIES



- LEGEND**
- QUATERNARY**
GLACIAL AND POSTGLACIAL DEPOSITS
- 5 Swamp deposits: peat and organic debris more than 4 feet thick
 - 4 Beach complex: gravel and sand 5 to 40 feet thick; continuous beach ridges common
 - 2 3 Thick ground moraine: till; commonly more than 4 feet thick over bedrock; includes patches of thin lacustrine sediments and winnowed gravel over till; poorly drained; local relief commonly less than 5 feet
 - 3 Surface smooth and even-textured on air photographs
 - 2 Surface marked by minor intersecting lineaments plainly visible on air photographs
 - 1 Thin ground moraine: till; commonly less than 4 feet thick over broad bedrock rises; includes patches of winnowed gravel over till or bedrock; fairly well drained; local relief less than 5 feet
- CENOZOIC**
- R Bedrock: dolomite; broad ridges and rises with 5 to 75 feet local relief; drift and swamp in inter-ridge areas; higher areas covered by dolomite rubble and beach sand and gravel 2 to 4 feet thick
- Geological boundary (approximate, assumed)
- Fluting
- Crag and tail hill
- Glacial stria (direction of ice movement known, unknown)
- Beach ridge, beach terrace, spit, or bar
- Escarpment
- Geology by R. W. Klassen, 1965
- Geological cartography by the Geological Survey of Canada, 1967
- Base-map compiled and drawn by the Geological Survey of Canada, 1967 from maps published by the Surveys and Mapping Branch in 1950
- Magnetic declination 1967 varies from 12° 48' easterly at centre of west edge to 10° 33' easterly at centre of east edge. Mean annual change 1.0' westerly
- All elevations in feet above mean sea-level

Published 1967, the Centennial of Canadian Confederation



MAP 13-1966
PAPER 66-36
SURFICIAL GEOLOGY
WATERHEN - GRAND RAPIDS AREA
WEST OF PRINCIPAL MERIDIAN
MANITOBA
Scale 1:253,440
1 inch to 4 miles

Miles 4 0 4 8 12 Miles
Kilometres 6 0 6 12 18 Kilometres

