

LEGEND

- PALAEOZOIC**
- PENNSYLVANIAN**
RIVERSDALE GROUP
14 Grey sandstone
- MISSISSIPPIAN AND/OR PENNSYLVANIAN**
CANSO GROUP
13 Sandstone, shale
- WINDSOR GROUP**
12 Limestone, gypsum, anhydrite
- HORTON GROUP**
11 Conglomerate, micaceous sandstone, arkosic sandstone, red and green shale, carbonaceous shale, red arkose and arkosic conglomerate; paleoniscoid fish remains
- DEVONIAN OR EARLIER**
10 Andesite, rhyolite, agglomerate
- PRECAMBRIAN OR PALAEOZOIC**
9 Gabbro dykes
- 8 Diorite, quartz diorite, some granodiorite
- 7 Gabbro
- 6 Coarse-grained biotite granite
- 5 Porphyroblastic biotite granite
- 4 Composite gneiss
- 3a, 3b 3a, leucocratic biotite granite and biotite-muscovite granites; 3b, with numerous pegmatite dykes
- 2A, 2B 2A, Quartzite, crystalline limestone, green chloritic quartzite, phyllite, slate, mica schist 2B, Andesite, rhyolite
- 1a-1d Schists and gneisses (probably highly metamorphosed equivalents of 2); 1a, biotitic; 1b, hornblende; 1c, gametiferous; 1d, staurolitic

- Heavily drift-covered area
- Geological boundary (defined, approximate, assumed)
- Bedding (inclined, upper side of bed unknown)
- Schistosity (inclined, vertical)
- Gneissosity and foliation (inclined, vertical)
- Fault (defined, approximate, assumed)
- Shaft
- Mineral prospect or quarry X Cu

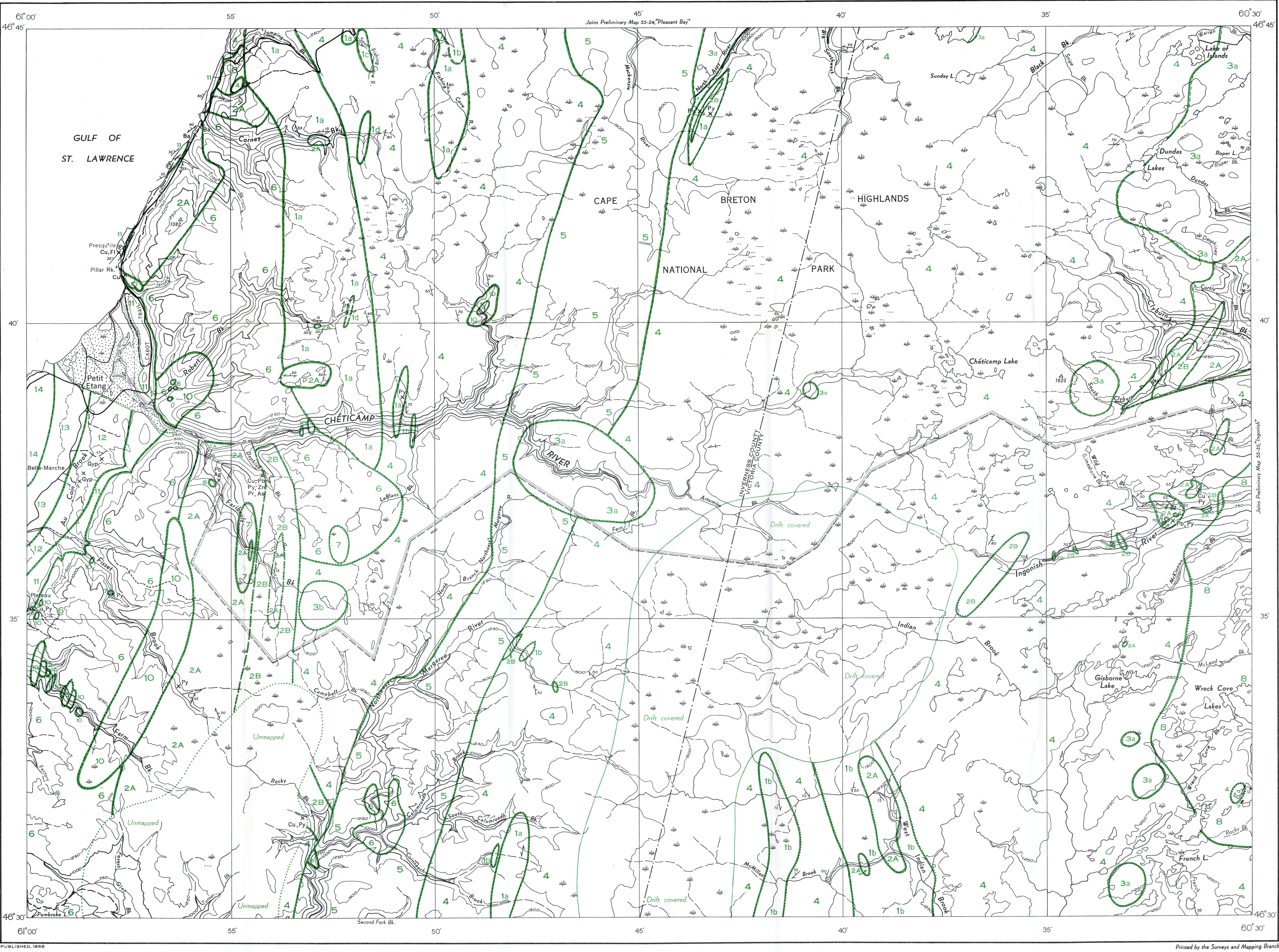
- MINERAL OCCURRENCES**
- Arsenopyrite As Barite Ba
Chalcopyrite Cu Fluorite Fl
Galena Pb Gypsum Gyp
Pyrite Py Pyrrhotite Pr
Silver Ag Sphalerite Zn

Geology by A. S. MacLaren, 1954

Approximate magnetic declination, 26° 34' West

Cartography by the Geological Cartography Unit, 1956

Air photographs covering this map-area may be obtained through the National Air Photographic Library, Topographical Survey, Ottawa, Ontario

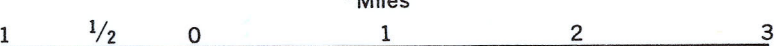


PUBLISHED, 1956

Printed by the Surveys and Mapping Branch

PRELIMINARY MAP 55-36
CHÉTICAMP RIVER
INVERNESS AND VICTORIA COUNTIES
CAPE BRETON ISLAND
NOVA SCOTIA

Scale: One Inch to One Mile = $\frac{1}{63,360}$ Miles



LEGEND

- Main highway
- Other roads
- Trail
- County boundary
- Park boundary
- Horizontal control point
- Intermittent stream
- Marsh
- Contours (interval 250 feet)
- Height in feet above mean sea-level 1282

PRELIMINARY MAP 55-36
CHÉTICAMP RIVER
NOVA SCOTIA

SHEET 11 ^K/₁₀

