

LEGEND

GENEOZOIC

TERTIARY
 PASKAPOO FORMATION: sandstone, shale, conglomerate

CRETACEOUS

UPPER CRETACEOUS
 EDMONTON FORMATION: sandstone, shale, conglomerate, volcanic ash, coal seams. May include some Paskapoo beds.
 BRAZEAU FORMATION: sandstone, shale, conglomerate, volcanic ash, a few thin coal seams.
 WARIABI FORMATION (Upper Part, transitional into Brazeau): black marine shale, sandstone, ironstone, chert pebble-conglomerate.
 WARIABI FORMATION (Lower Part): black marine shale, sandy shale, ironstone.
 BIGHORN FORMATION: quartzitic sandstone, black marine shale, conglomerate.
 BLACKSTONE FORMATION: chiefly black marine shale, grey quartzitic sandstone, sandy shale.

LOWER CRETACEOUS
 MOUNTAIN PARK FORMATION: olive green and brown weathering grey sandy shale and sandstone.
 LUSCAR FORMATION: black and grey carbonaceous shale, grey sandstone, coal seams.
 CADOMIN FORMATION: chert and quartzite pebble-conglomerate.
 NIKANASSIN FORMATION: alternating black shale and grey sandstone, a few thin coal seams.

JURASSIC
 FERNE FORMATION: alternating sandstone and sandy shale, ferruginous limestone, black fissile shale, phosphatic limestone.

CARBONIFEROUS

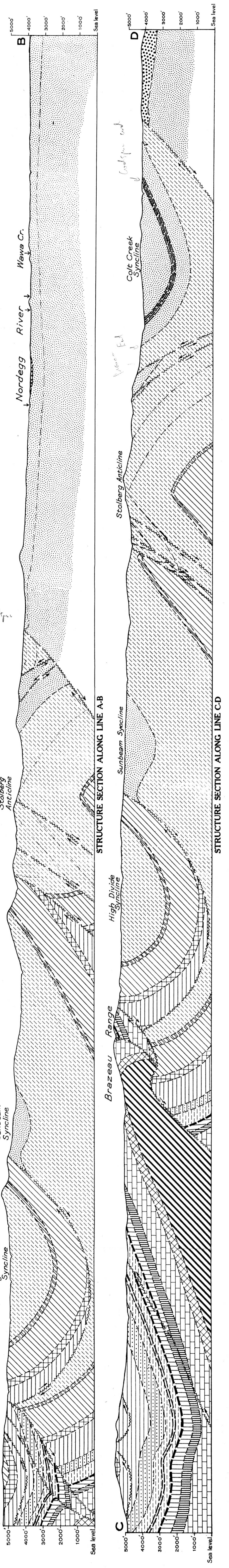
MISSISSIPPIAN AND PENNSYLVANIAN
 RUNDLE FORMATION: granular, rubbly and porous limestone, chert.
 BANFF FORMATION: calcareous and arenaceous shale, shaly and cherty limestone.

DEVONIAN
 Hard, blue-grey limestone, grey, calcareous shale.

Bedding (inclined, overturned) *— / *
 Fault *— — — — —*
 Anticlinal axis *— — — — —*
 Synclinal axis *— — — — —*
 Coal seam *— — — — —*

Geology by B.R. MacKay, 1941.

Road *— — — — —*
 Trail *— — — — —*
 Township outline, unsurveyed *— — — — —*
 Contour interval 100 feet



PRELIMINARY MAP 43-10
WAWA CREEK
 WEST OF FIFTH MERIDIAN
 ALBERTA
 Scale: 2 inches to 1 mile

This map has been reprinted from a scanned version of the original map. Reproduction par numérisation d'une carte sur papier.