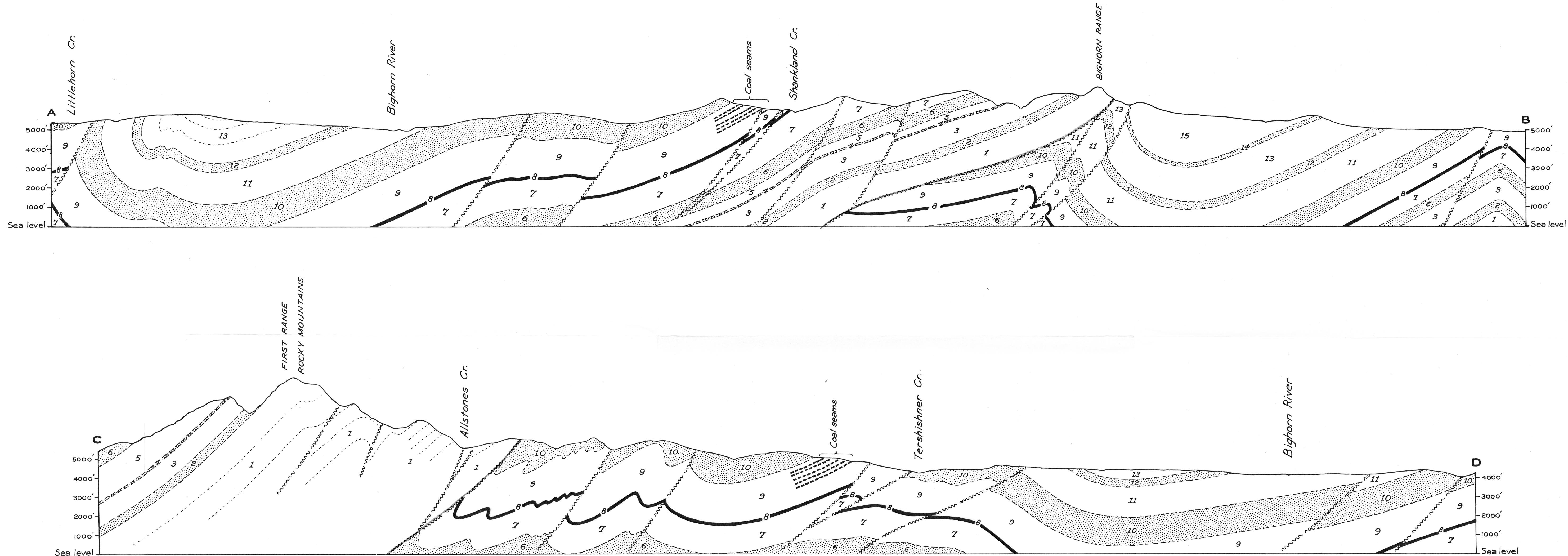


# LEGEND

- CRETACEOUS**
- UPPER CRETACEOUS**
- 15 BRAZEAU FORMATION: sandstone, shale, volcanic ash, a few thin coal seams
- 14 WAPIABI FORMATION ( Upper Part, transitional into Brazeau ): black marine shale, sandstone, ironstone, chert pebble-conglomerate
- 13 WAPIABI FORMATION ( Lower Part ): black marine shale, sandy shale, ironstone
- 12 BIGHORN FORMATION: quartzitic sandstone, black marine shale, conglomerate
- 11 BLACKSTONE FORMATION: chiefly black marine shale, grey quartzitic sandstone, sandy shale
- LOWER CRETACEOUS**
- 10 MOUNTAIN PARK FORMATION: olive green and brown weathering grey sandy shale and sandstone
- 9 LUSCAR FORMATION: black and grey carbonaceous shale, grey sandstone, coal seams
- 8 CADOMIN FORMATION: chert and quartzite pebble-conglomerate
- 7 NIKANASSIN FORMATION: alternating black shale and grey sandstone, a few thin coal seams
- JURASSIC**
- 6 FERNIE FORMATION: alternating sandstone and sandy shale, ferruginous limestone, black fissile shale, phosphatic limestone
- TRIASSIC**
- 5 SPRAY RIVER FORMATION: thin-bedded, fine-grained arenaceous shale and quartzite, buff and red-weathering limestone
- CARBONIFEROUS**
- PENNSYLVANIAN**
- 4 ROCKY MOUNTAIN FORMATION: quartzite, chert
- MISSISSIPPIAN AND PENNSYLVANIAN**
- 3 RUNDLE FORMATION: granular, rubbly and porous limestone, chert
- BANFF FORMATION:** calcareous and arenaceous shale, shaly and cherty limestone
- DEVONIAN**
- 1 Hard, blue-grey limestone, grey, calcareous shale



## STRUCTURE SECTIONS ALONG LINES A B AND C D

Horizontal and Vertical Scale:- 2 inches to 1 mile

TO ACCOMPANY PRELIMINARY GEOLOGICAL MAP 41-9  
BIGHORN RIVER, ALBERTA