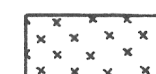
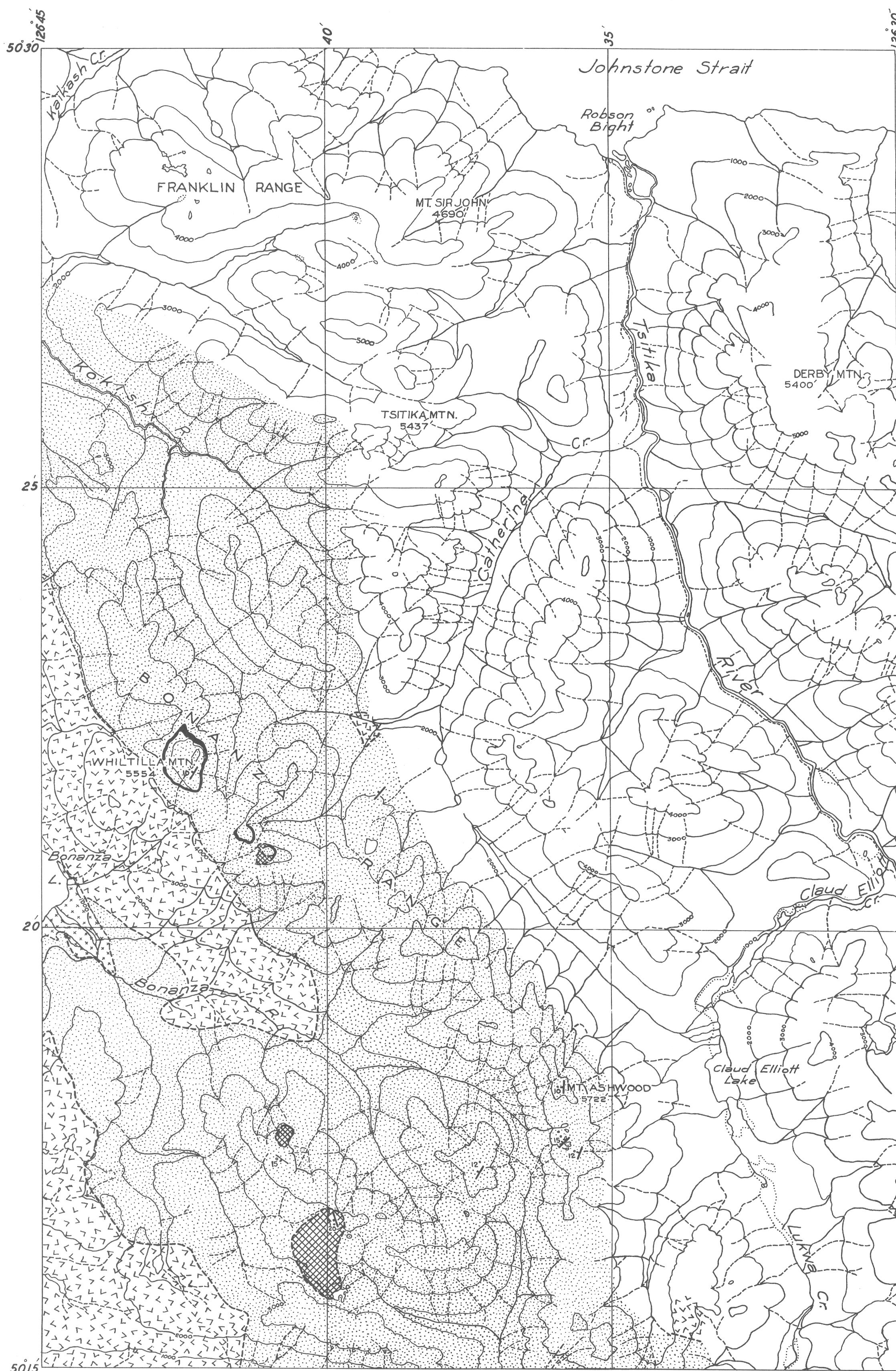


NIMPKISH
EAST HALF
BRITISH COLUMBIA

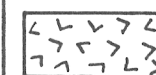


Recent alluvium and glacial drift

POST-TRIASSIC

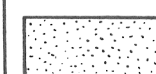


COAST RANGE INTRUSIVES; quartz porphyry



COAST RANGE INTRUSIVES: quartz monzonite, granodiorite, quartz diorite, gabbro

TRIASSIC



KARMUTSEN VOLCANICS: andesite, basalt; breccia, some tuff; minor beds of limestone

M E S O Z O I C

Geological boundary (defined, assumed)....

0 1 2 3 4 5
Scale of miles