

This document was produced  
by scanning the original publication.

Ce document est le produit d'une  
numérisation par balayage  
de la publication originale.

CANADA  
DEPARTMENT OF MINES

HON. T. A. CRERAR, MINISTER; CHARLES CAMSELL, DEPUTY MINISTER

---

BUREAU OF ECONOMIC GEOLOGY  
GEOLOGICAL SURVEY

---

PRELIMINARY GEOLOGICAL MAPS  
(Areal and Structural)

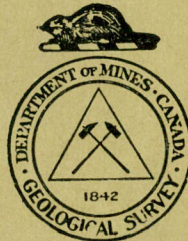
---

MANITOULIN ISLAND  
MANITOULIN DISTRICT  
ONTARIO

BY

M. Y. Williams

Paper 36 - 21



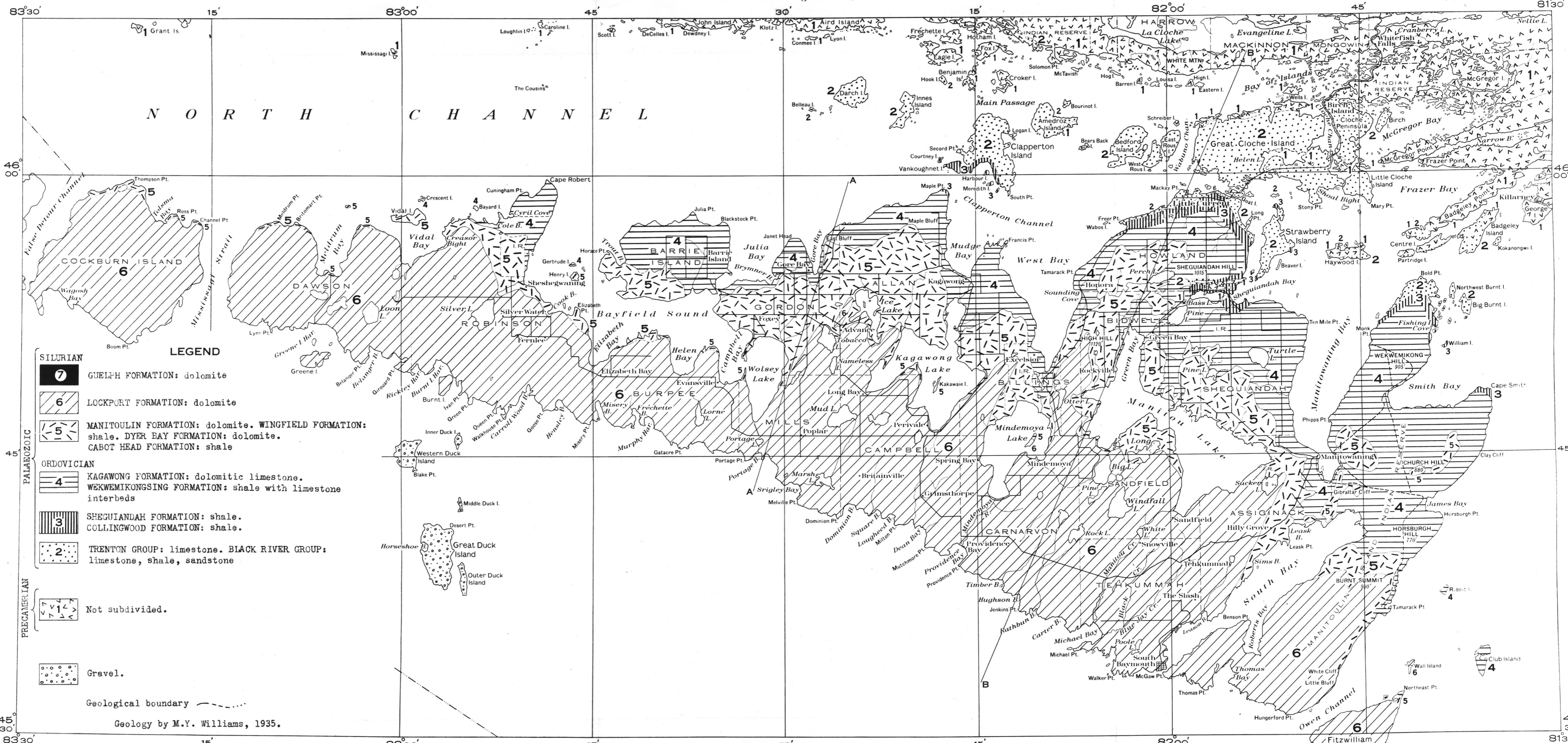
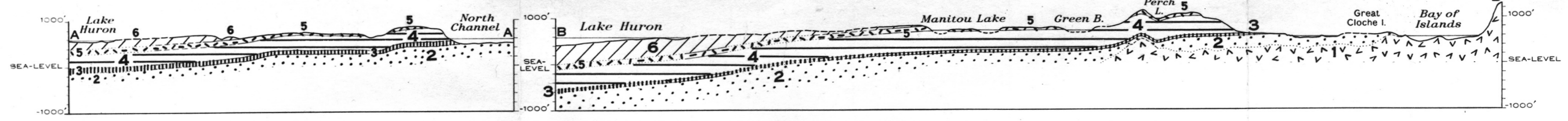
---

OTTAWA

1936

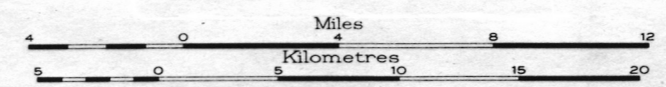
36-21





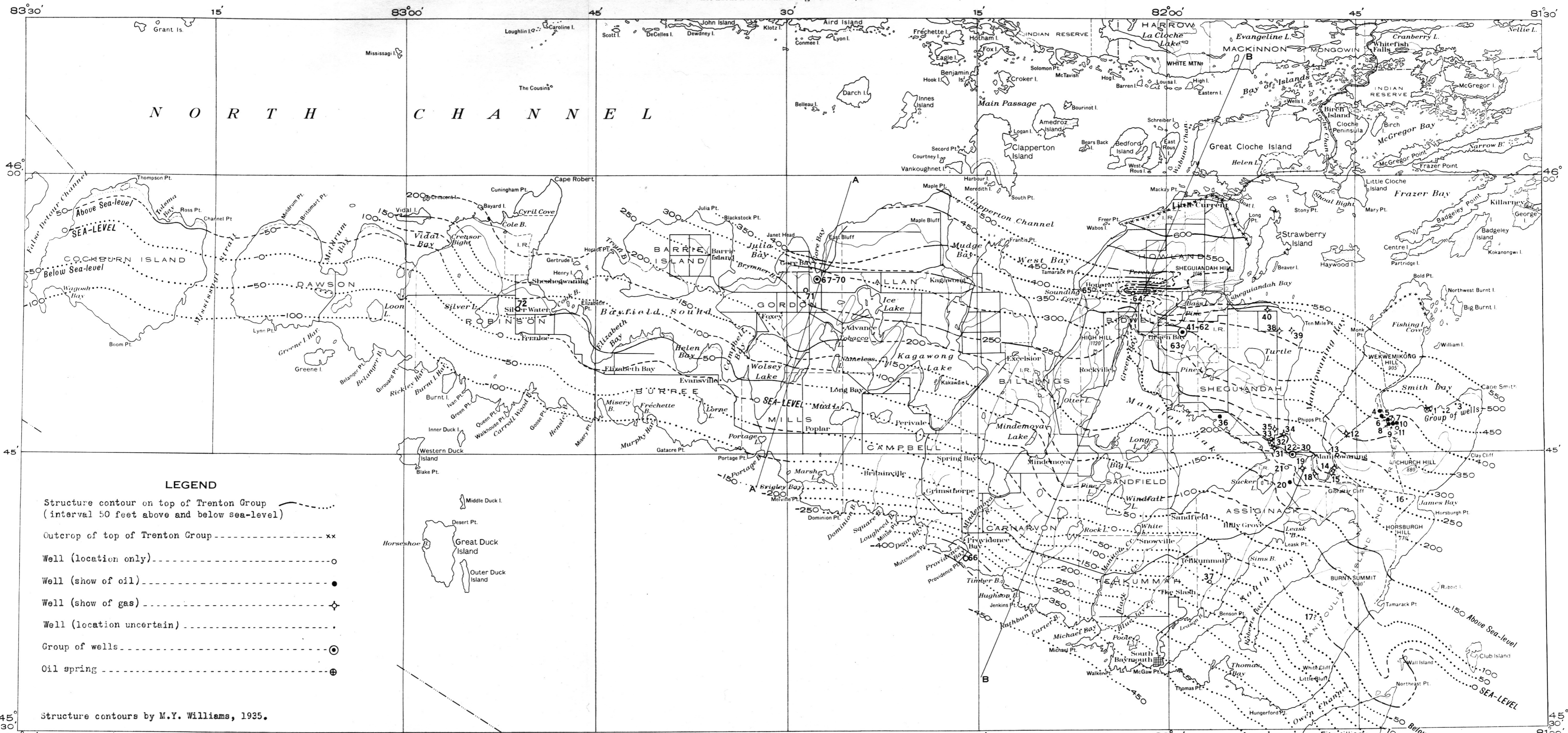
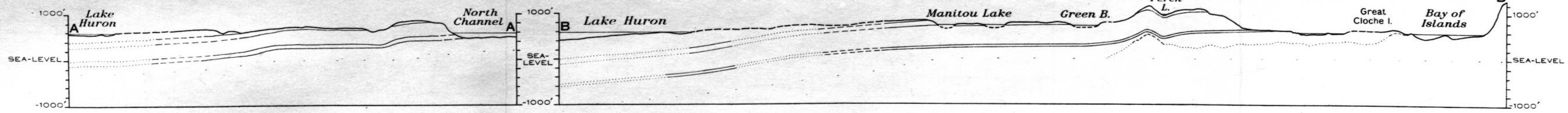
Geological Survey, Department of Mines, Canada.

PRELIMINARY MAP SHOWING GEOLOGY  
**MANITOULIN ISLAND**  
 MANITOULIN DISTRICT  
 ONTARIO



PAPER 36-21  
 AUGUST 1936





**LEGEND**

Structure contour on top of Trenton Group (interval 50 feet above and below sea-level) - - - - -

Outcrop of top of Trenton Group - - - - - x x

Well (location only) - - - - - o

Well (show of oil) - - - - - ●

Well (show of gas) - - - - - ◊

Well (location uncertain) - - - - - ○

Group of wells - - - - - ⊙

Oil spring - - - - - ⊕

Structure contours by M.Y. Williams, 1935.

