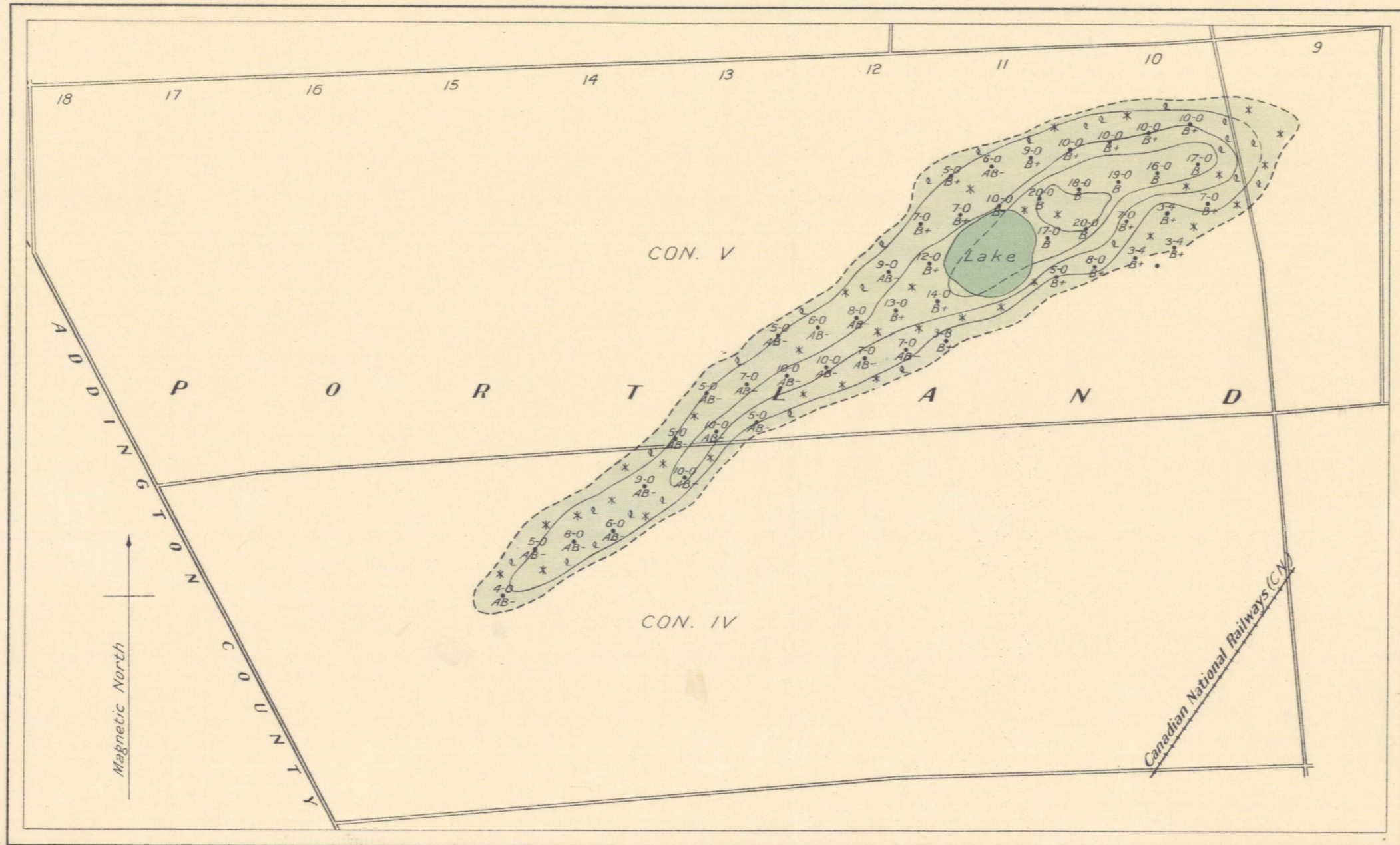

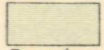
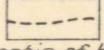
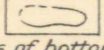
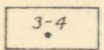
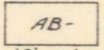
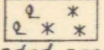


extends to 28"



**Legend**

-  Water areas
-  Peat bog
-  Margin of bog
-  Contours of bottom of bog (lines show depth below surface)
-  Drill-hole (with thickness of peat shown in feet and inches)
-  Peat classification symbols
-  Wooded areas

**Classification of Peat**

- |  |                                     |   |
|--|-------------------------------------|---|
| Peat more or less suitable for the manufacture of <b>peat fuel</b>   | A                                   | } highly humified; good   |
|  | A-                                  |   |
|  | AB+                                 | } well humified   |
|  | AB                                  |   |
|  | AB-                                 |   |
| B+   |                                     |   |
| B  | } less well humified; poor          |   |
| Peat more or less suitable for the manufacture of <b>peat litter</b> | B-                                  | } <b>not suitable</b> for the manufacture of peat fuel or peat litter |
|  | BC+                                 |   |
|  | BC                                  | } slightly humified; poor   |
|  | BC-                                 |   |
|  | C+                                  |   |
| C  |                                     |   |
| C-   | } practically free from humus; good |   |

Geological Survey, Canada.

Publication N° 1879.

Harrowsmith Peat Bog, Portland Township, Frontenac County, Ontario.

To accompany Memoir by A. Anrep

Scale, 1600 feet to 1 inch  
1000 0 1000 2000 3000

**NOT TO BE TAKEN FROM LIBRARY  
NE PAS SORTIR DE LA BIBLIOTHEQUE**

Peat surveys by A. Anrep, 1920.

5.1.7  
A, Geol.



1879