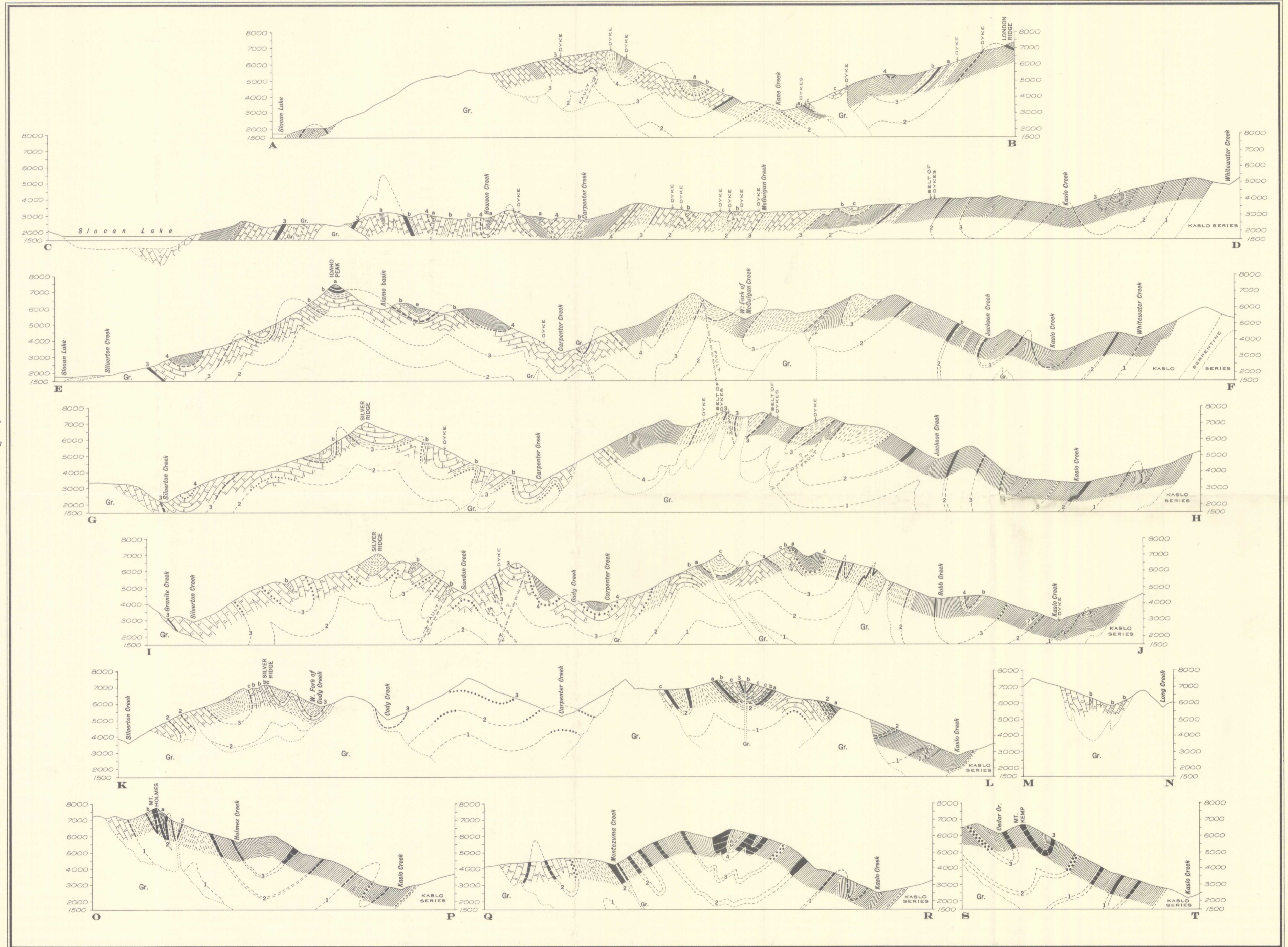


Slocan, B.C. Structure section. Fig. 3
S.L.2
A. Geol.



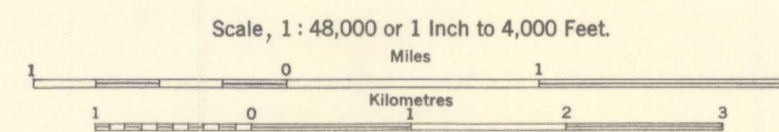
LEGEND

- Gr. Granite and allied rocks
 - Limestone
 - Limestone (position approximate)
 - Limestone (assumed)
 - Fissile slate and argillaceous rocks
 - Fissile slate and argillaceous rocks interbedded with more massive phases and with slightly coarser strata
 - Chiefly massive argillaceous and quartzitic strata
 - Fault
- Numbers 1, 2, 3, 4, (on Sections) indicate successive horizons

To accompany Memoir by C. E. Cairnes.

Publication No. 2277

FIGURE 3.
STRUCTURE SECTIONS OF THE SLOCAN SERIES
(to accompany "Map 273A-Sandon, Slocan and Ainsworth Mining Divisions, Kootenay District, British Columbia")



NOT TO BE TAKEN FROM LIBRARY
NE PAS SORTIR DE LA BIBLIOTHEQUE
OF CANADA

2277