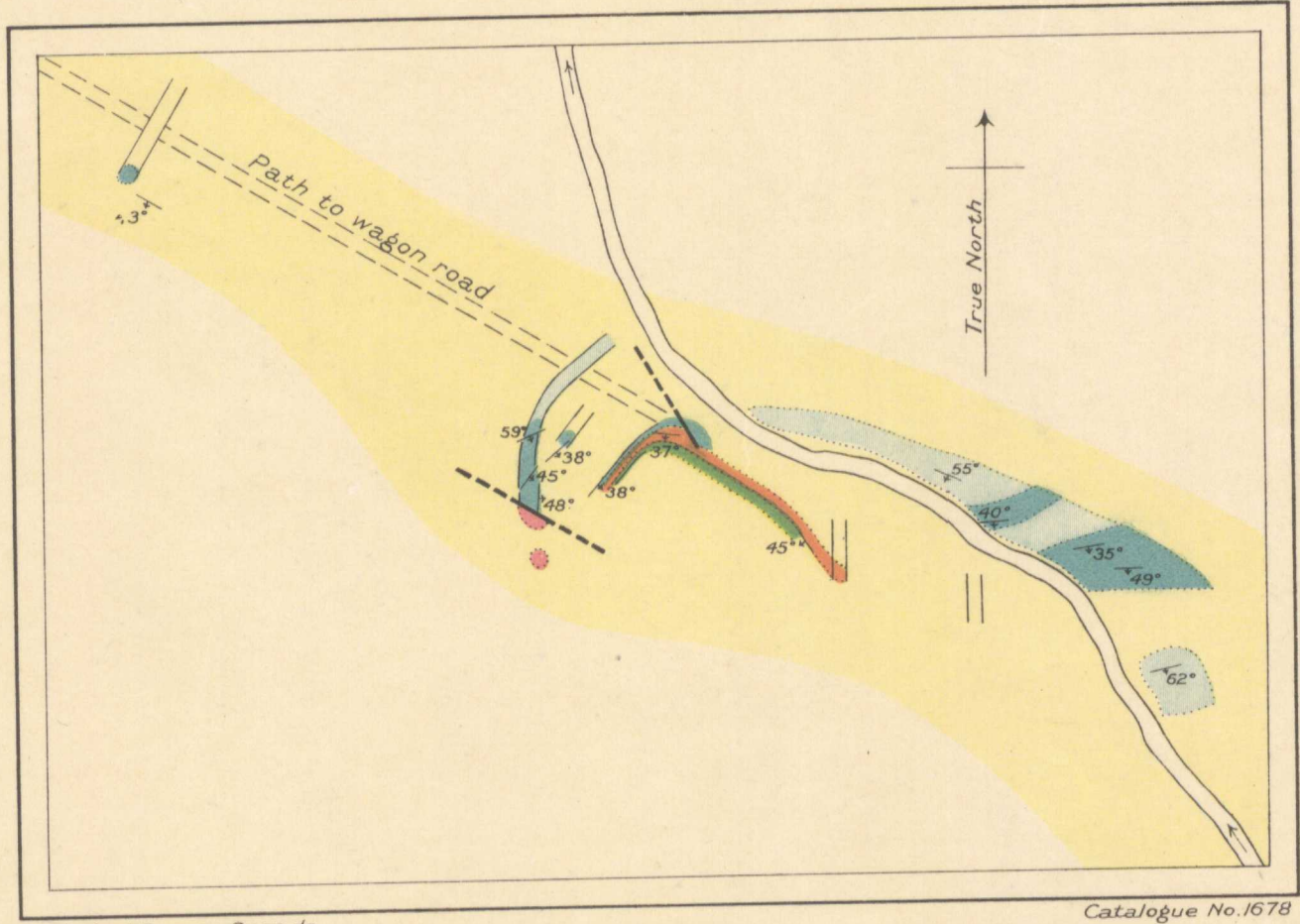


extent to 28"

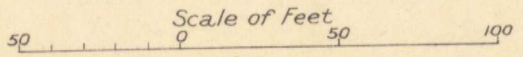


- Legend**
- Sedimentary*
- Boulder clay
 - Ferruginous bed
 - Sandstone
 - Shale
- Igneous*
- Extrusive
 - Intrusive
- Symbols**
- Geological boundary
 - Fault, located
 - Fault, inferred
 - Dip and strike
 - Trench

Geological Survey, Canada.

Catalogue No. 1678

Iron ore bed, Piedmont, Pictou county, Nova Scotia.



To accompany Summary Report by Albert O. Hayes, 1916.

**NOT TO BE TAKEN FROM LIBRARY
NE PAS SORTIR DE LA BIBLIOTHÈQUE**

Piedmont
516
A.P.II

1678

This map has been produced from a scanned version of the original map
Reproduction par numérisation d'une carte sur papier