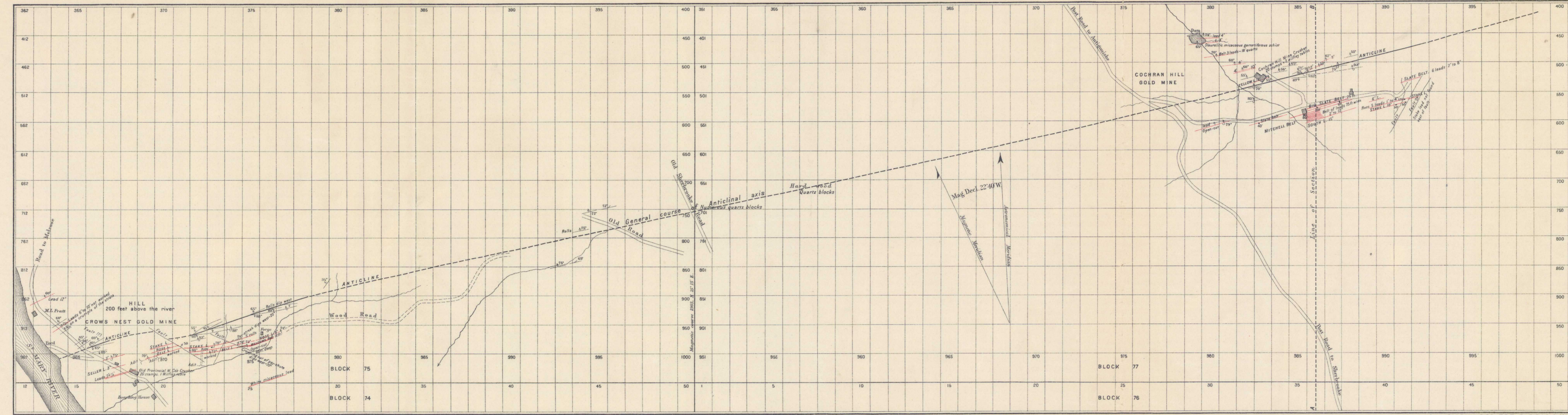


- Index to Signs
- Dip and strike of strata
 - Vertical dip and strike of strata
 - Interbedded quartz veins (Leads)
 - Dip of Veins
 - Dip of rolls in veins
 - Dip of pay-streak
 - Thickness of veins in inches
 - Depth of shaft in feet measured on the incline
 - Glacial striae
 - Roads
 - Wood roads
 - Faults

Note.
 The structure of this district is not everywhere known with certainty owing to the few rock exposures and to the limited mining development.
 The plan is published, however, as it may encourage further development in certain indicated directions.



C.O. Senzil B.A.Sc., Geographer and Chief Draughtman.

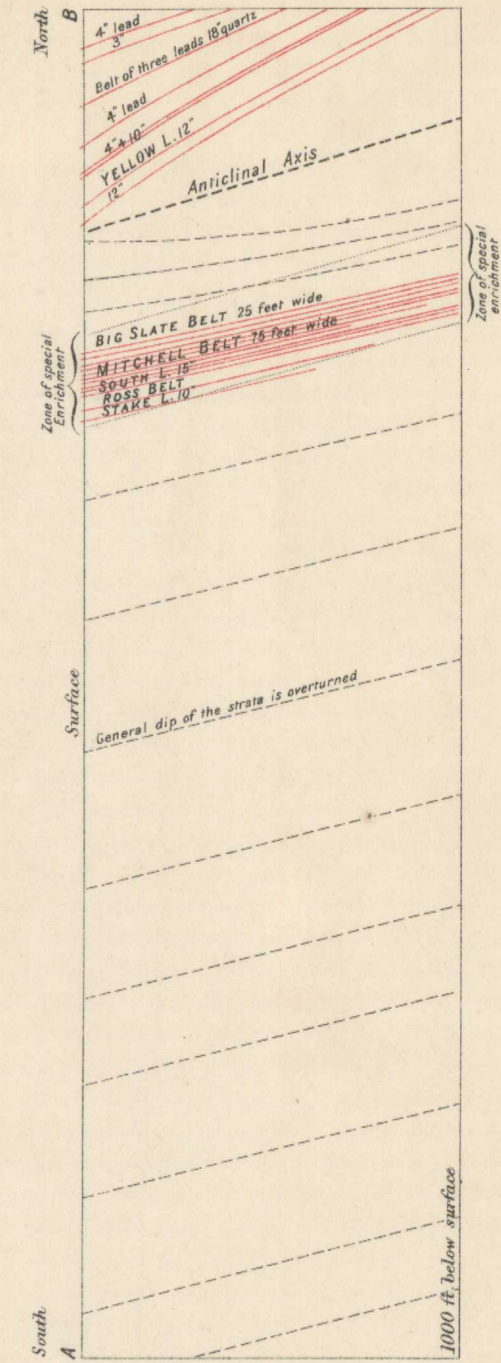
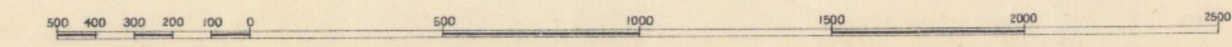
Surveyed and compiled by F.R. Paribault B.A.Sc. in 1902.

No. 343.

Price 10c

PLAN and SECTION
 COCHRAN HILL GOLD DISTRICT,
 GUYSBOROUGH CO.,
 NOVA SCOTIA.

Scale 500 feet to 1 inch.



CROSS-SECTION ON LINE A-B.

N.S.
 Cochrane Hill gold dist.

C 511-G
 PTA, P-D

NOT TO BE TAKEN FROM LIBRARY
 NE PAS PRENDRE DE LA BIBLIOTHÈQUE



843