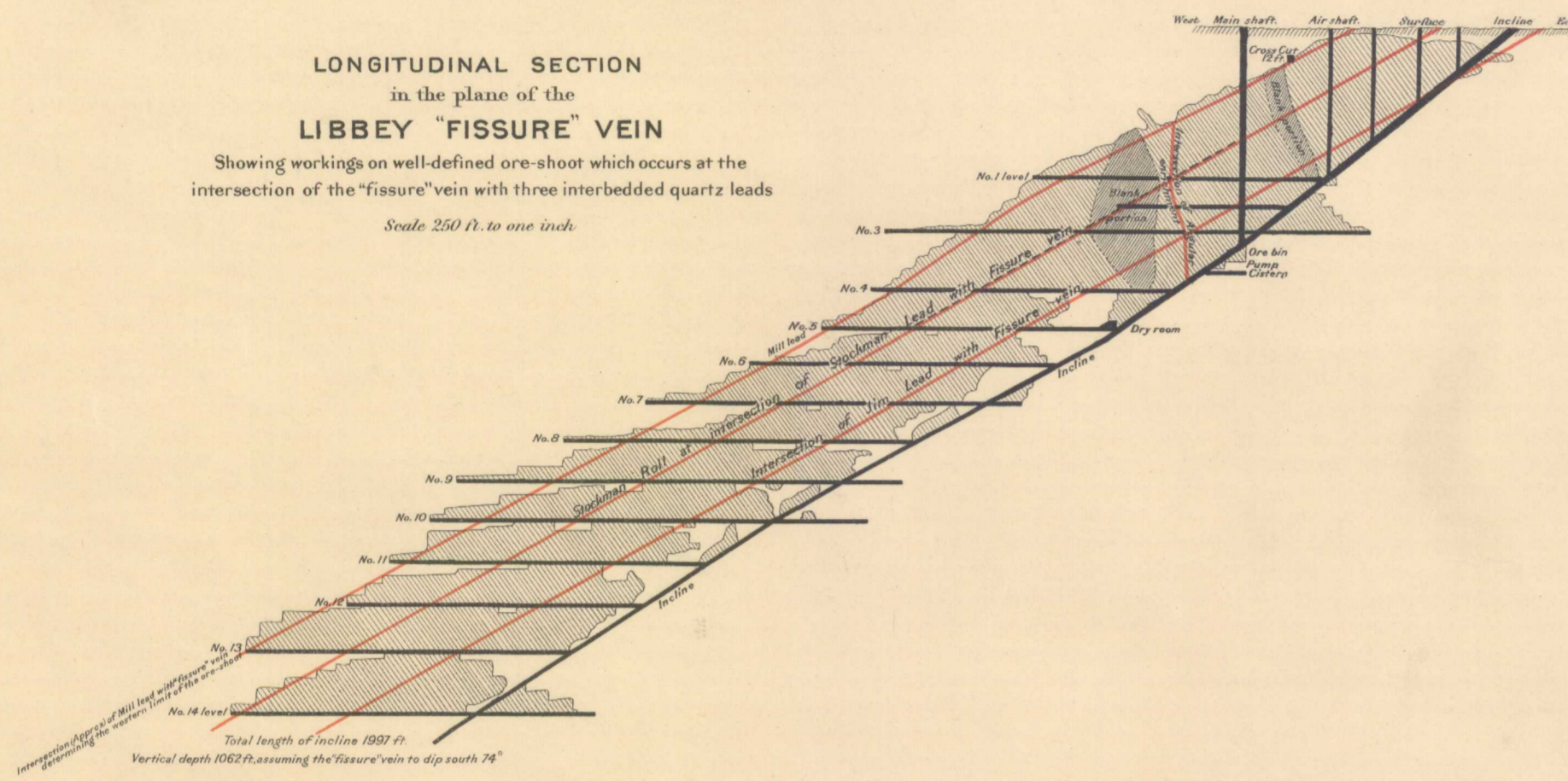
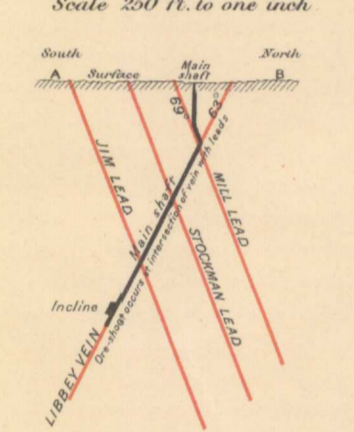


**LONGITUDINAL SECTION**  
 in the plane of the  
**LIBBEY "FISSURE" VEIN**  
 Showing workings on well-defined ore-shoot which occurs at the  
 intersection of the "fissure" vein with three interbedded quartz leads  
 Scale 250 ft. to one inch

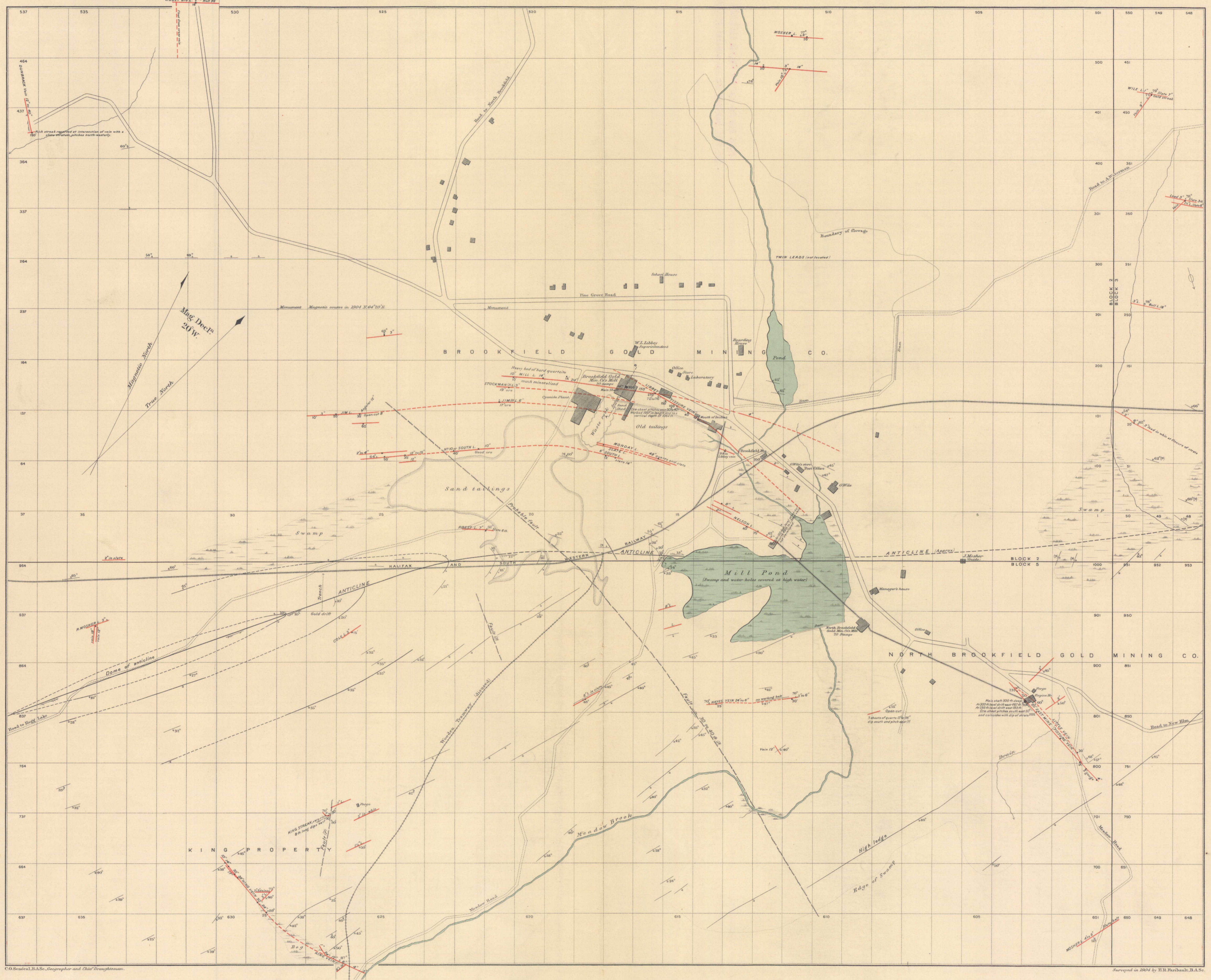


**VERTICAL TRANSVERSE SECTION A.B.**  
 Through main shaft and across LIBBEY "FISSURE" VEIN and the three interbedded leads  
 Scale 250 ft. to one inch



**Index to signs**

- Vertical Dip
- Dip and strike of strata
- Quartz Vein
- Dip of floor
- Dip of vein in vein
- Dip of peg strata
- Thickness of vein in inches
- Depth of shaft in feet measured on the incline
- Shaded Strata
- Roads
- Wood Roads
- Fences
- Rights in feet where one level



**PLAN and SECTIONS**  
**BROOKFIELD GOLD DISTRICT**  
 QUEENS CO. NOVA SCOTIA  
 by  
 E. R. FARIBAUT, B.A. Sc.

Scale 250 Feet to 1 Inch.

N<sup>o</sup> 1012  
 Price 10¢

Brookfield

S.I.C.  
 A.P.D.

NOT TO BE TAKEN FROM LIBRARY  
 L'AS OUVIS DE LA BIBLIOTHÈQUE