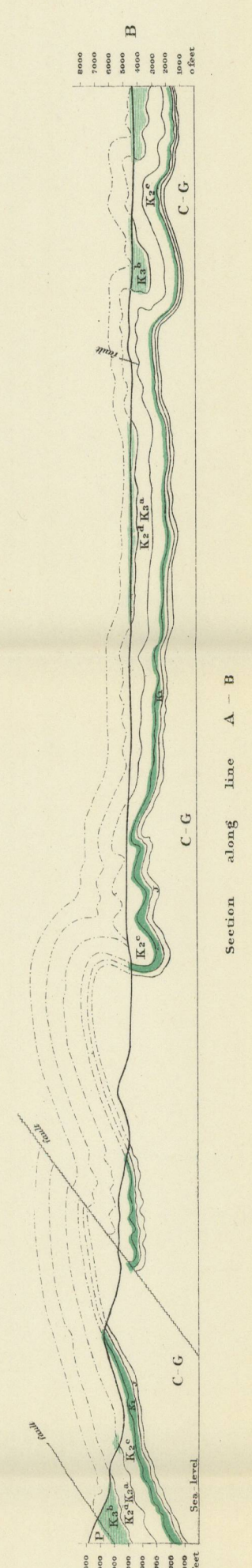
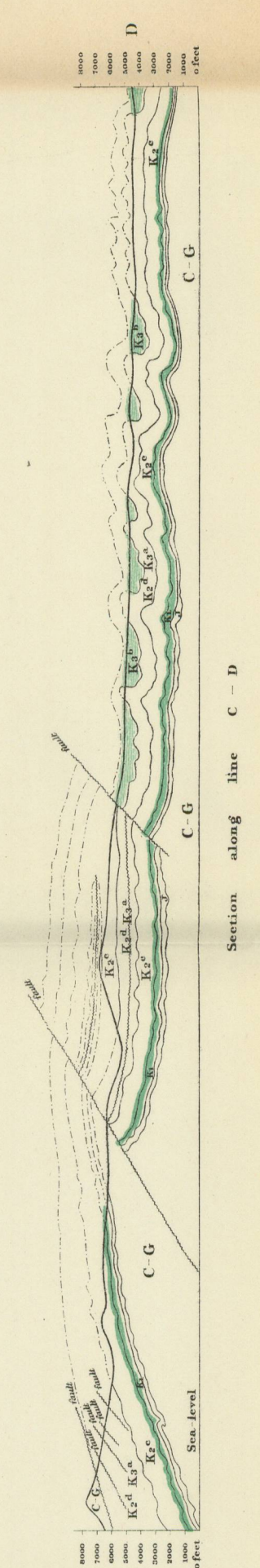


GEOLOGICAL SURVEY

Index to colours and signs

- Cretaceous**
- K^{5a}** Edmonton. *Stages of lignite occur in this formation.*
- K^{3b}** Belly River or Judith River. *High grade lignite and fine sand are characteristic of this zone.*
- K¹** Kootenai. *Shales and sandstone and is to be found along all the rivers or valleys in the area. The same formation is visible in the adjacent States.*
- Geological boundaries
- do do not bound
- Coal seams
- Bank lines
- Sp and strike
- ▲ HARWELL: Primary Triangulation Stations
- ▲ Robinson: Secondary do do
- NICHOL: General Station
- B.M. 12: Bench Marks
- Wagon Roads, Trails
- Altitudes in feet above sea level
- 6 Range numbers
- 21 Township numbers
- Contour interval: 250 feet



C.O. Senecal, B.A.Sc., Geographer and Chief Draughtsman.

Topographical Map
 SHOWING COAL AREAS
 of the
MOOSE MOUNTAIN REGION
 of the
"DISTURBED BELT"
 SOUTHERN ALBERTA

to illustrate Report by
 D. D. CAIRNES, B.Sc., M.E.
 1905.

Scale, 2 statute miles to 1 inch - 1:62,500

N^o 966
 Price 10 cents

SOURCES OF INFORMATION
 Photographic map of the Parkville
 Region by A.G. Wheeler, D.S.S. 1892-4.
 Surveys by D.D. Cairnes, 1902.
 Township plans and maps of the Department
 of the Interior.
 Geology and Compilation by D.D. Cairnes.

This map has been reprinted from a
 scanned version of the original map.
 Reproduction par numérisation d'une
 carte sur papier