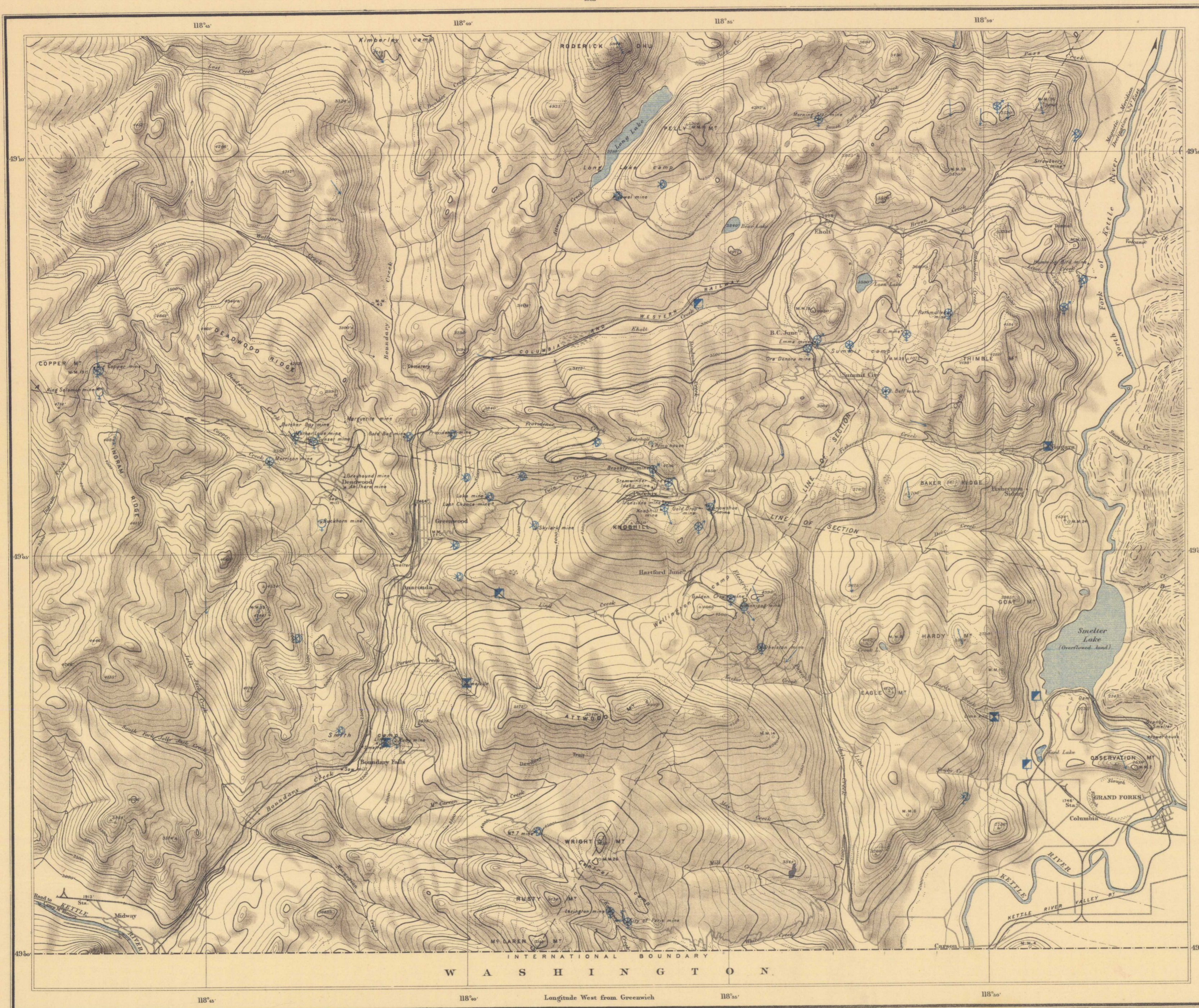


Geological Survey of Canada

ROBERT BELL, M.D., D.Sc. (Hon.), LL.D., F.R.S., I.S.O., ACTING DIRECTOR.
1905



Explanation of Signs

- * Gold quartz
- * Gold in sulphate
- Copper
- ⊕ Magnetic gold-copper ore
- ⊗ Pyritic gold-copper ore
- ⊙ Gold-silver quartz
- ⊕ Gold-silver sulphate
- ⊖ Silver lead ore
- Brick clay
- ⊠ Limestone
- Glacial Stria

▲ Triangulation stations. M.M. 33 Mineral monuments.

1745 Heights of railway grade, in feet above sea level.

2250 Heights in feet above sea level.

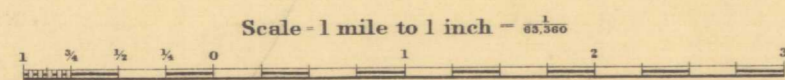
Contour interval, 100 feet.

Broken contours approximate only.

— Roads. — Trails.

C.D. Senecal, B.A.Sc., Geographer & Chief Draughtsman

To accompany Annual Report Vol. IV.
No. 834.
Price 10 cts.



Magnetic Declination about 24° East.

Topographical Map
of
BOUNDARY CREEK MINING DISTRICT,
BRITISH COLUMBIA.

ECONOMIC MINERALS AND GLACIAL STRIAE
by
R. W. BROCK, M. A.

SOURCES OF INFORMATION
Topography and compilation by W.H. Boyd. Supplemental traverses by R.W. Brock.
The area to the East of the North Fork of the Kettle River by W.W. Leach.
Railways from plans filed in the Department of Railways and Canals.
The longitude of this sheet depends upon the position of Midway Station
as determined astronomically by U.J. Hiltz and F.W. Wemyss, Department
of the Interior.

NOT TO BE TAKEN FROM LIBRARY
NE PAS SORTIR DE LA BIBLIOTHÈQUE



834

Boundary Crk.

5.1.2
A, Top