

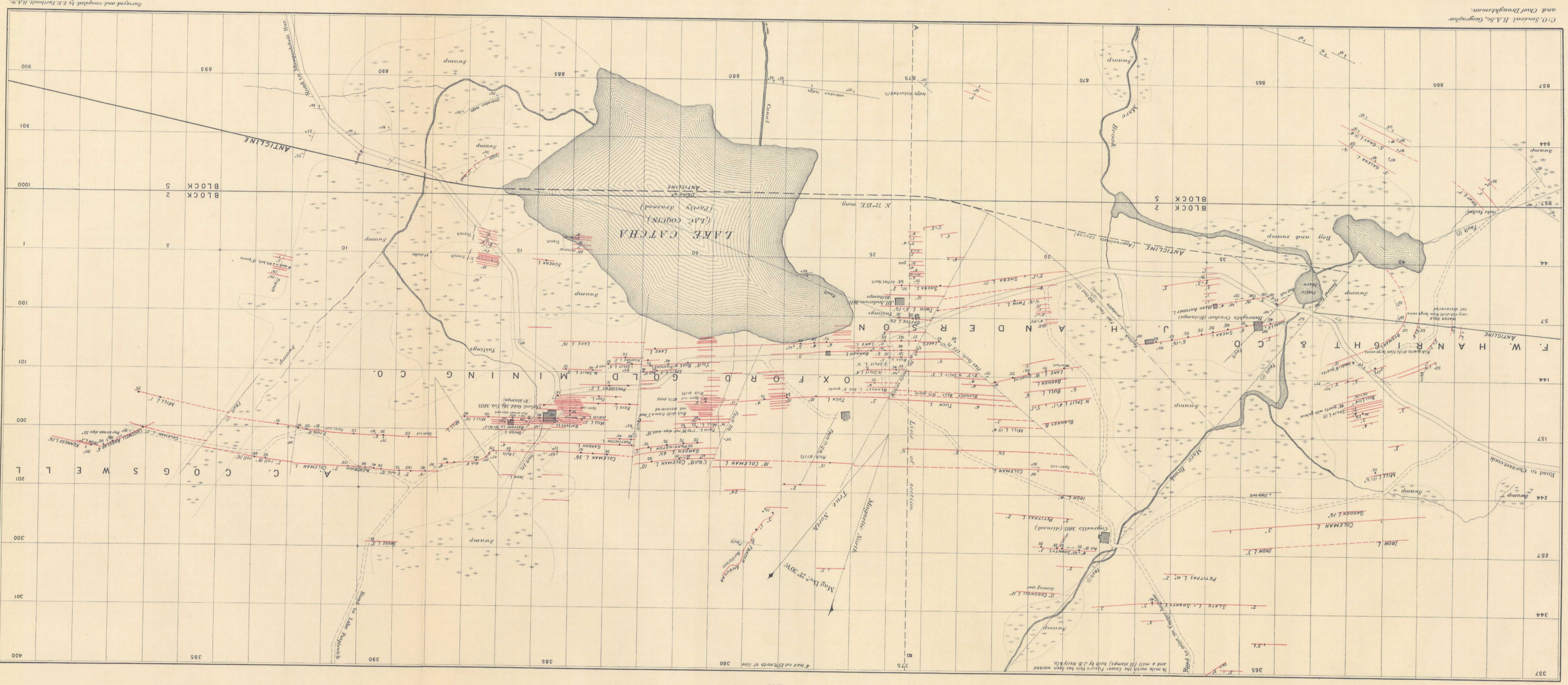
51.C  
A.P.D  
Lake Catcha Gold Dist.

NOT TO BE TAKEN FROM LIBRARY  
NE PAS SORTIR DE LA BIBLIOTHEQUE



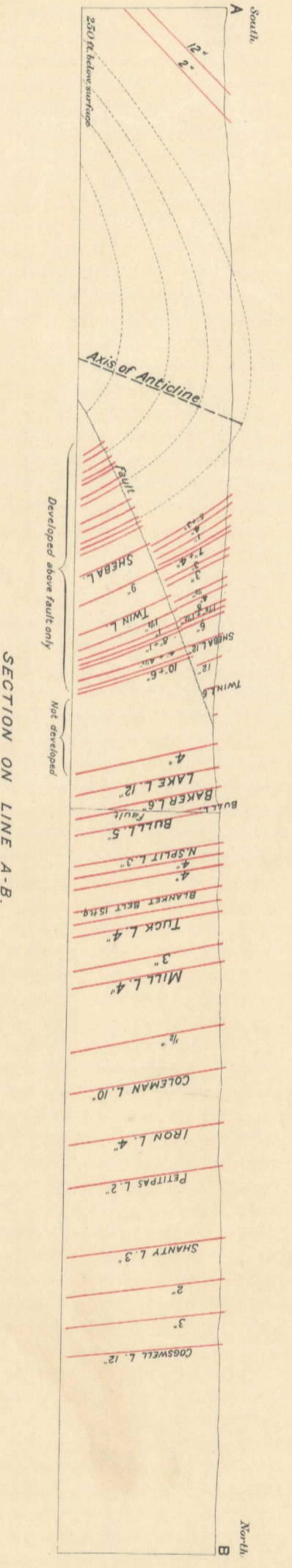
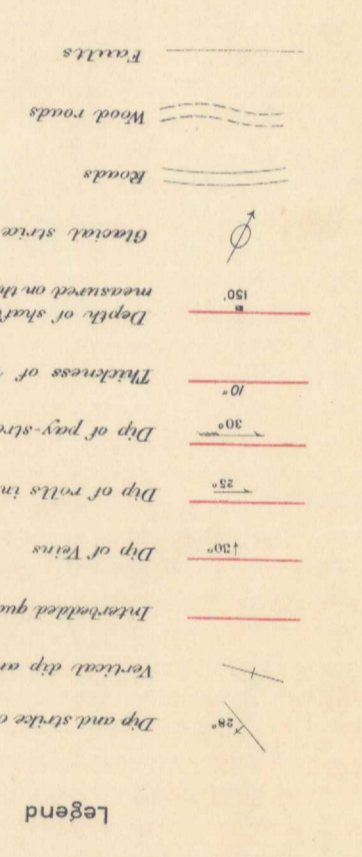
Scale 250 feet to 1 inch  
NOVA SCOTIA.

LAKE CATCHA GOLD DISTRICT HALIFAX CO.  
PLAN and SECTION



C. O. Sargent, B.Sc., Geographer  
and Chief Draftsman.

Surveyed and compiled by E. E. Turberville, B.A.Sc.



No. 765  
Price 10 cts.

This map has been produced from a scanned version of the original map  
Reproduction par numérisation d'une carte sur papier