

LEGEND

SURFICIAL DEPOSITS

- PLEISTOCENE AND RECENT**
- 8 Peat and muck; includes poorly drained areas supporting fen, swamp, and marsh vegetation
- ALLUVIAL DEPOSITS**
- 7 Stratified sand and silty clay; thickness at least 4 feet; commonly underlain by soft marine clay
- AEOLIAN SAND**
- 6 Sand derived from glacial till by wave wash and blown into dunes along ancient beaches
- DEPOSITS OF THE CHAMPLAIN SEA**
- 5a Beach gravel, fossiliferous; 5b, near-shore sand deposits (includes bars and spits)
  - 4 Marine sand, commonly fossiliferous
  - 3 Marine clay and silt, fossiliferous; locally overlain by a thin layer of sand
- GLACIAL TILL**
- 2 Till; drumlinized
  - 1 Fort Covington till; compact, grey, to buff when oxidized, sandy till; includes bouldery, washed till on hills and slopes  
Malone till (lower till); very compact, blue-grey, clay till
- BEDROCK OUTCROPS**
- ORDOVICIAN**
- R Limestone, shale, dolomite, sandstone; includes areas of bedrock with thin cover of surficial deposits

- Rock outcrop
- Glacial striae
- Drumlin, drift ridge (direction of ice movement indicated)
- Boulder beach; beach ridge
- Fossil locality
- Quarry
- Locality of specimen, dated in years by radiocarbon method

Geology by J. Terasmae and R. J. Mott, 1958 and 1959

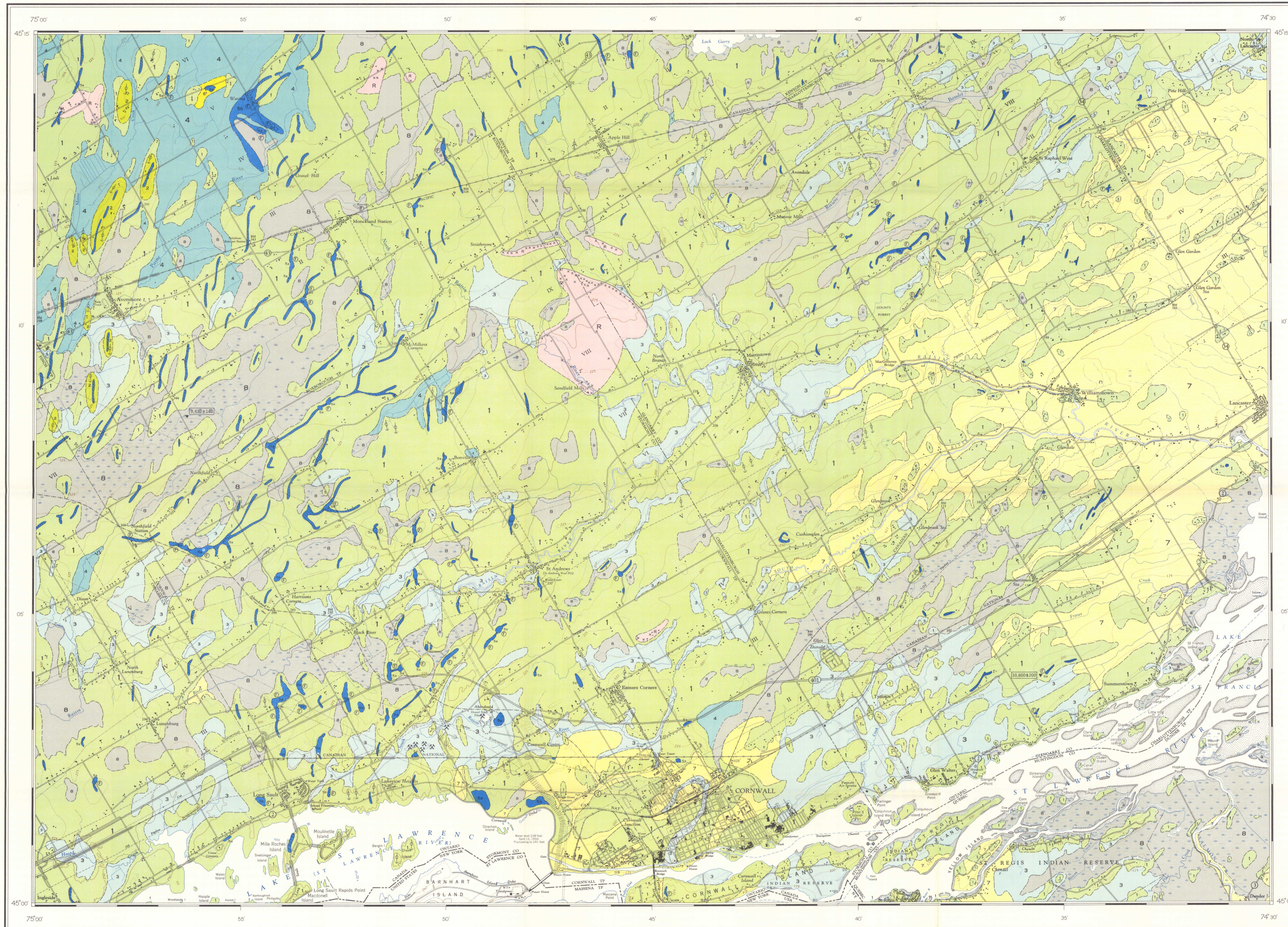
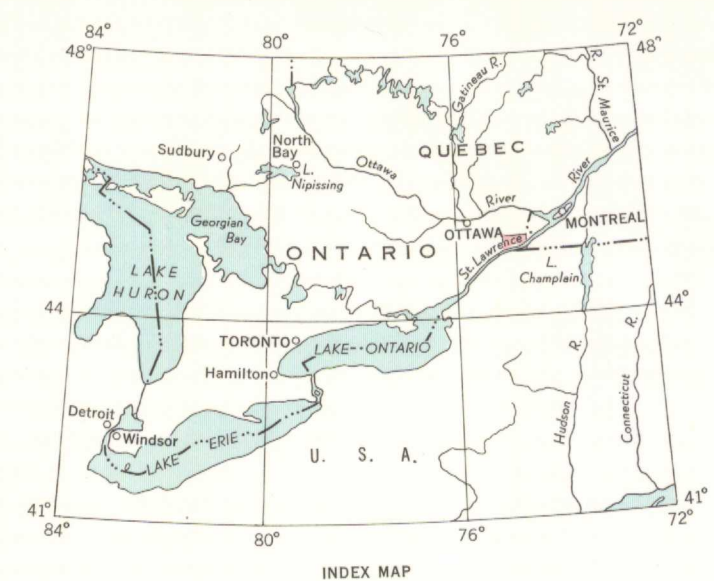
To accompany GSC Bulletin 121 by J. Terasmae

Geological cartography by the Geological Survey of Canada, 1964

- Road, all weather
- Other roads
- Cart track
- Railway; multiple, single track
- Power; telephone line
- Building
- Church
- School
- Post Office
- Cemetery
- Lighthouse
- Wharf
- Bridge
- Horizontal control point
- Bench mark
- International boundary
- Interprovincial boundary
- County boundary
- Township boundary
- Indian Reserve boundary
- Intermittent stream
- Ditch or flume
- Marsh
- Foreshore flats
- Contours (interval 25 feet)
- Height in feet above mean sea-level

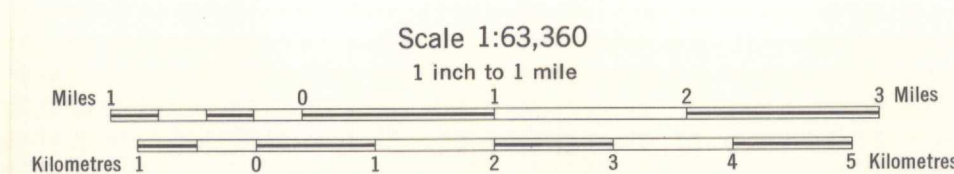
Base-map compiled and drawn by the Army Survey Establishment, R. C. E. 1963 with revisions by the Geological Survey of Canada, 1964

Approximate magnetic declination, 13° 54' West



PUBLISHED, 1968  
COPIES OF THIS MAP MAY BE OBTAINED FROM THE DIRECTOR, GEOLOGICAL SURVEY OF CANADA, OTTAWA

MAP 1175A  
 SURFICIAL GEOLOGY  
**CORNWALL**  
 ONTARIO-QUEBEC



NOT TO BE TAKEN FROM LIBRARY  
NE PAS SORTIR DE LA BIBLIOTHÈQUE

1175-A