

Geological and Natural History Survey of Canada.

ALFRED R. C. SELWYN, LL.D., F.R.S. & DIRECTOR.

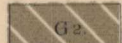
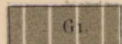
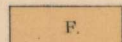
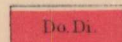
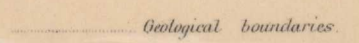
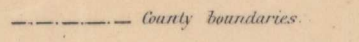
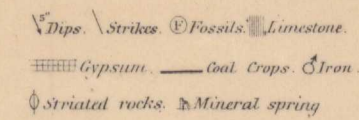
1884.
22

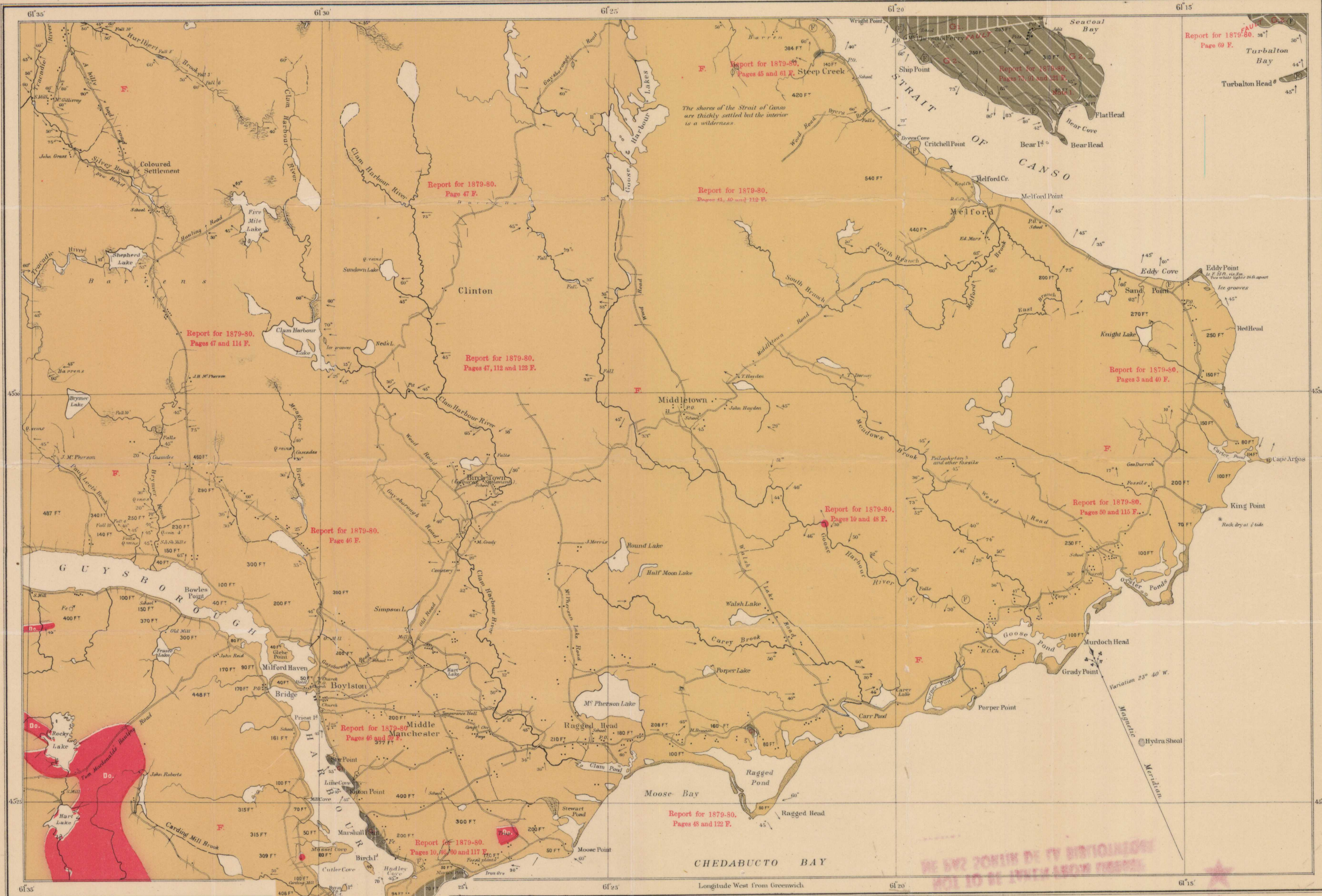
N^o 24.

Sheet

Note 1.—The rocks immediately north and west of Bear Cove belong probably to G₁ (Report for 1879-80, Page 91 F.) but their relation to the coal measures has not yet been determined with certainty.

Explanation of Colours and Signs.

-  Middle Carboniferous. (Millstone grit & Coal measures.)
-  Lower Carboniferous.
-  Devonian.
-  Dolerite, Diorite &c.
-  Geological boundaries not traced
-  County boundaries
-  Dip, Strike, Fault, etc. Limestone, Gypsum, Coal, Crags, Iron, Striated rocks, Mineral spring



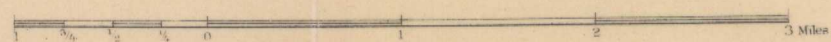
Computed and drawn by Hugh Fletcher: from plans made by the Admiralty, the Department of Crown Lands, Nova Scotia, and the Geological Survey.

The Vardian Lith. Company Montreal.

PROVINCE OF NOVA SCOTIA.
(Island of Cape Breton)

Nat. Scale: 1 inch = 1 mile

Scale 1 mile to one inch.



DE BUREAU ZONIER DE LA BIBLIOTHEQUE
N^o 10 DE L'INSTRUMENT

To illustrate reports by Hugh Fletcher, 1879 to 1884.

Guysborough

207

South end of Strait
of Canso