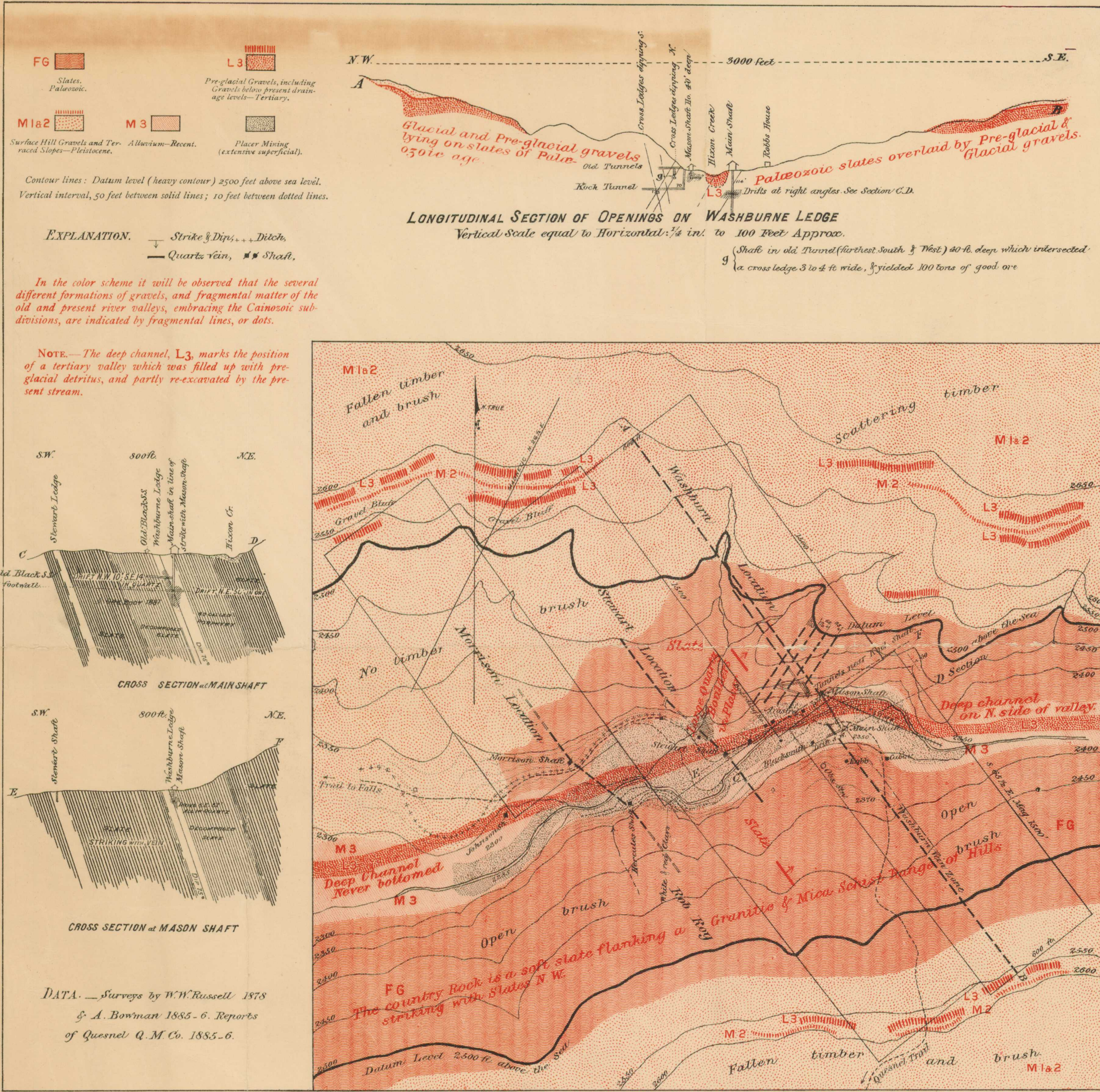


Alfred R.C. Selwyn C.M.G., L.L.D., F.R.S., Director.
1889.



FG Slates, Palaeozoic.
L3 Pre-glacial Gravels, including Gravels below present drainage levels—Tertiary.
M1&2 Surface Hill Gravels and Terraced Slopes—Pleistocene.
M3 Alluvium—Recent.
Placer Mining (extensive superficial).

Contour lines: Datum level (heavy contour) 2500 feet above sea level.
Vertical interval, 50 feet between solid lines; 10 feet between dotted lines.

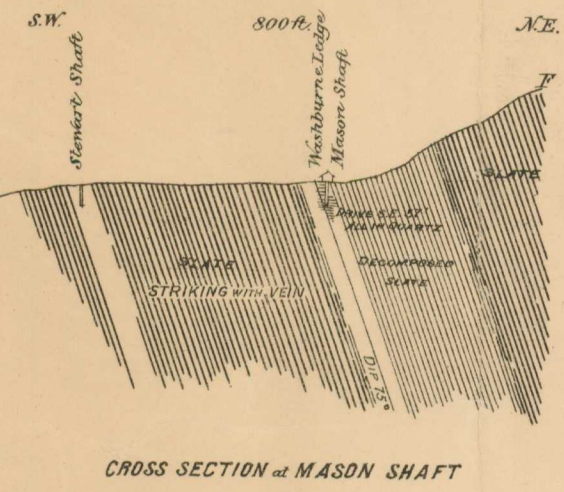
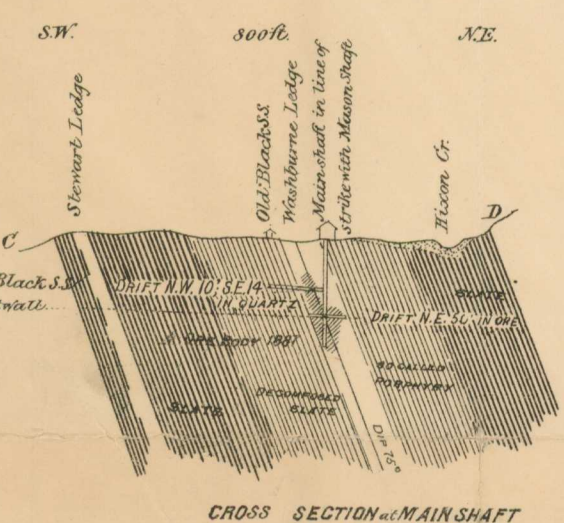
EXPLANATION. — Strike & Dip, +++ Ditch, — Quartz vein, ■ Shaft.

LONGITUDINAL SECTION OF OPENINGS ON WASHBURNE LEDGE
Vertical Scale equal to Horizontal: 1/4 in. to 100 Feet Approx.

Shaft in old Tunnel (furthest South & West) 40 ft. deep which intersected a cross ledge 3 to 4 ft. wide, & yielded 100 tons of good ore

In the color scheme it will be observed that the several different formations of gravels, and fragmental matter of the old and present river valleys, embracing the Cainozoic subdivisions, are indicated by fragmental lines, or dots.

NOTE.—The deep channel, L3, marks the position of a tertiary valley which was filled up with pre-glacial detritus, and partly re-excavated by the present stream.



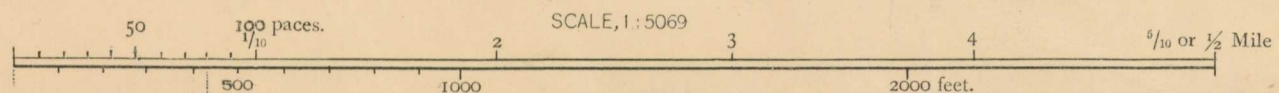
DATA. — Surveys by W.W. Russell 1878 & A. Bowman 1885-6. Reports of Quesnel Q. M. Co. 1885-6.

SURVEYS CARRIED OUT with the CO-OPERATION of the PROVINCIAL GOVERNMENT of BRITISH COLUMBIA
The Hon. JOHN ROBSON, Minister of Mines.
1885.6

To illustrate Report of A. Bowman

DETAIL MAP OF HIXON CREEK QUARTZ LOCATIONS
IN CARIBOO DISTRICT. B. C.
With Adjacent Placers.

SURVEYED AND DRAWN BY AMOS BOWMAN, MINING ENGINEER



NOTE. — One inch = 1/8000 Mile, or 10 Paces = 80 Links. The Military or Roman Pace employed is a double pace of 8 links = 5.28 ft. = 1 revolution of the odometer wheel: 1000 = 1 Mile.

This map has been reprinted from a scanned version of the original map. Reproduction par numérisation d'une carte sur papier