

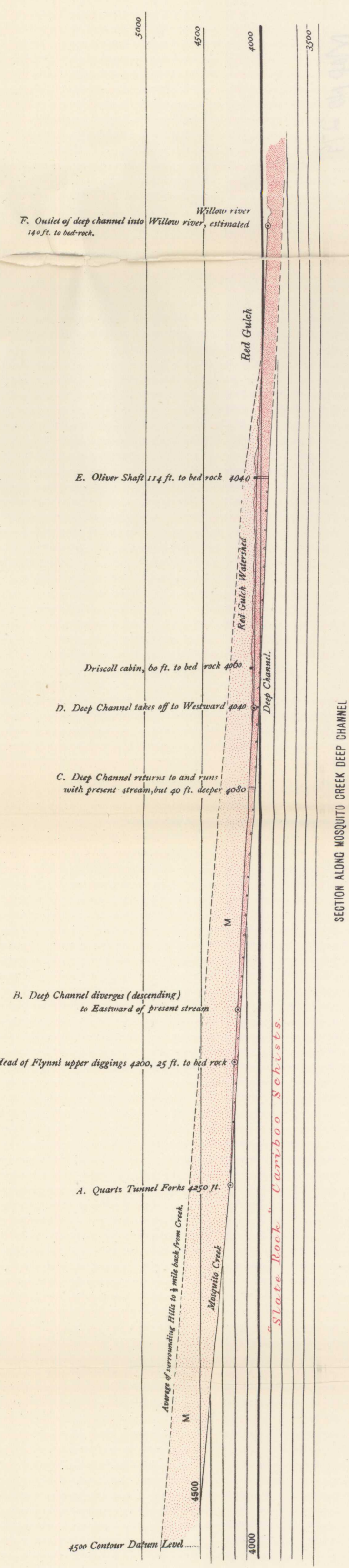
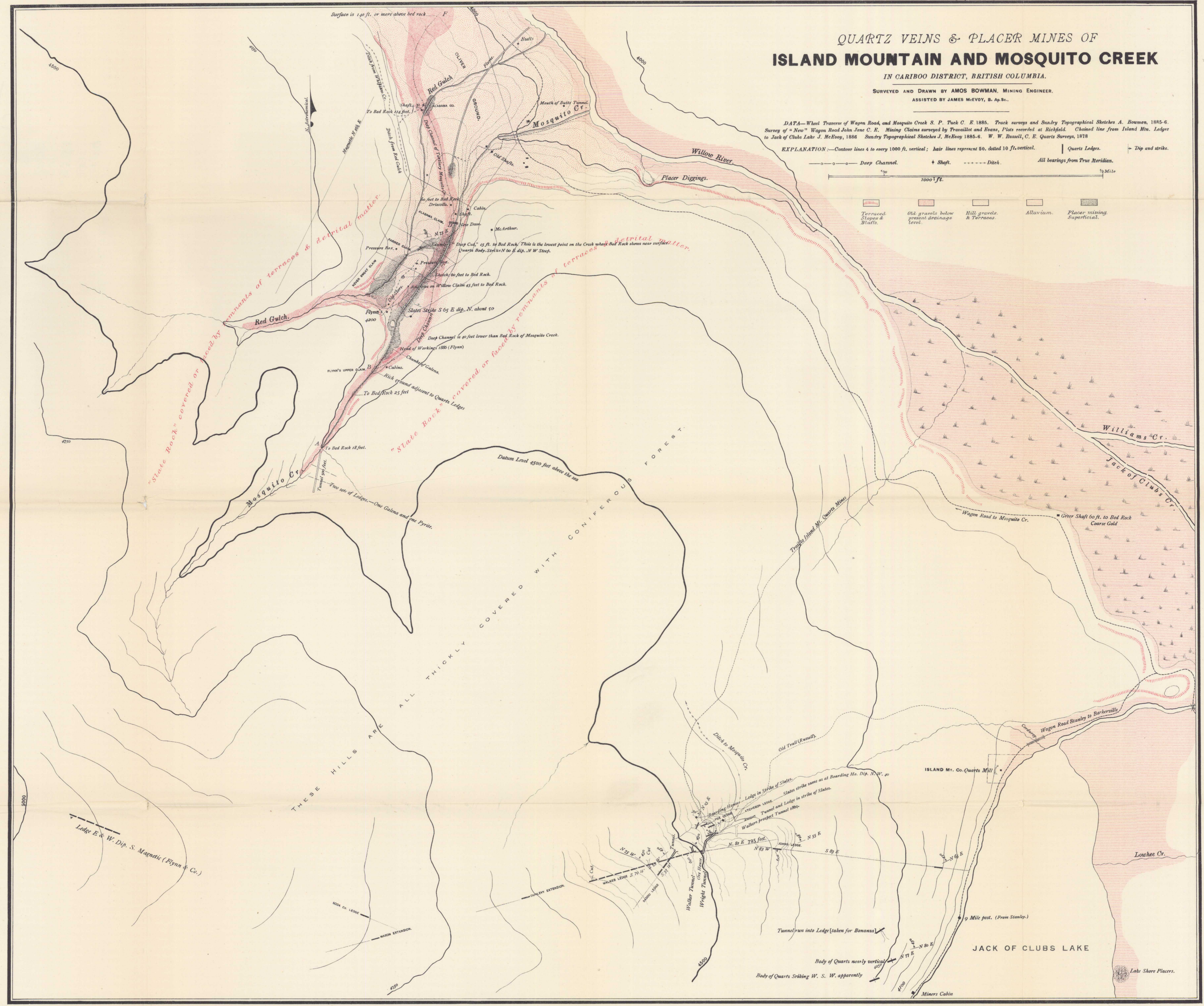
QUARTZ VEINS & PLACER MINES OF  
**ISLAND MOUNTAIN AND MOSQUITO CREEK**  
 IN CARIBOO DISTRICT, BRITISH COLUMBIA.

SURVEYED AND DRAWN BY AMOS BOWMAN, MINING ENGINEER.  
 ASSISTED BY JAMES MEVOY, S. A. P. S.

DATA.—Wagon Road, and Mosquito Creek S. P. Tuck C. E. 1885. Track surveys and Sundry Topographical Sketches A. Bowman, 1885-6. Survey of "New" Wagon Road John Sme C. E. Mining Claims surveyed by Trassilott and Evans, Plans recorded at Richfield. Chained line from Island Mt. Ledge to Jack of Clubs Lake J. MeEvoy, 1886. Sundry Topographical Sketches J. MeEvoy 1885-6. W. W. Russell, C. E. Quartz Survey, 1878.

EXPLANATION.—Contour lines 4 to every 1000 ft. vertical; hair lines represent 50, dotted 10 ft. vertical. Quartz Ledges. Dip and strike.  
 Deep Channel. Shaft. Ditch. All bearings from True Meridian.  
 1000 Feet. 1/2 Mile.

Terraced Slopes & Bluffs. Old gravels below present drainage level. Hill grounds & Terraces. Alluvium. Placer mining Superficial.



Drawn on stone by I. Marion.

SURVEYS CARRIED OUT with the CO-OPERATION of the PROVINCIAL GOVERNMENT of BRITISH COLUMBIA  
 The Hon. JOHN ROBSON, Minister of Mines,  
 in 1885-6

To illustrate Report of Amos Bowman.

NOT TO BE TAKEN FROM LIBRARY  
 NE PAS S'ENLEVER DE LA BIBLIOTHÈQUE

279