

DATA—Track surveys from Quesnel to Q. M. Co's claims, & thence to Falls of Hixon Creek. A. Bowman, Sept 24th 1885, ditto, to Government Creek Oct. 9th 1886. Surveys of claims by W. W. Russell, C. E., for Q. M. Co.

NOTE.—The deep channel, L3, marks the position of a tertiary valley which was filled up with pre-glacial detritus, and partly re-excavated by the present stream.

NOT TO BE TAKEN FROM LIBRARY
NE PAS SORTIR DE LA BIBLIOTHÈQUE

The Country Rock is a soft slate flanking granite and mica schist hills several miles to N & E. It contains frequent decomposition belts or zones of so-called "porphyry" which retain the dip & strike of the slates. Average strike N 60 W, Dip varying.

The entire Country is covered by Pleistocene detritus M1e2 and Terraces containing older gravels exposed by slides L3. Scattering timber.

VEINS & PLACER MINES OF HIXON CREEK

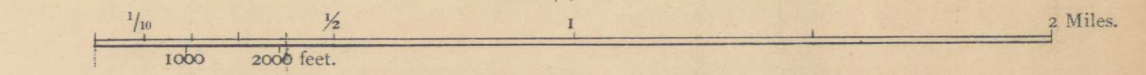
IN CARIBOO DISTRICT, BRITISH COLUMBIA

BY AMOS BOWMAN, MINING ENGINEER.

See Vol. III, pt. C (1888)

Scale 1" = 32 chains

SCALE, 1 : 25,355.



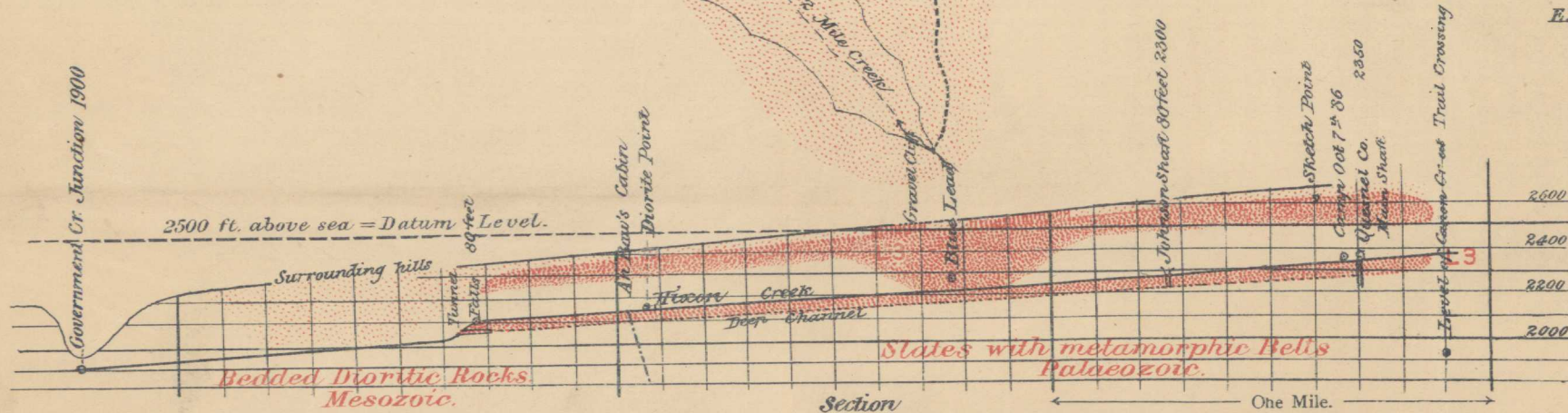
NOTE.—One inch = 1/4 inch = 1/16 Mile, or 100 Paces = 8 Chains. The Military or Roman Pace employed is a double step of 8 links = 528 feet = 1 revolution of the odometer wheel: 1000 to the Mile.

FG	JK	L3	M1e2	M3	
Slates, Paleozoic.	Bedded Eruptive Rock, Mesozoic.	Pre-glacial Gravels, including Gravels below present drainage levels—Tertiary.	Surface Hill Gravels and Terraced Slopes—Pleistocene.	Alluvium—Recent.	Placer Mining (extensive superficial).

EXPLANATION.—Contour lines & to every 1000 ft. vertical; dotted contours represent 50 ft. vertical.

+++ Ditch, ⚡ Shaft, + Dip & Strike, — Dip vertical, — Quartz ledge.

In the color scheme it will be observed that the several different formations of gravels, and fragmental matter of the old and present river valleys, embracing the Cainozoic subdivisions, are indicated by fragmental lines, or dots.



Vertical Scale exaggerated 5 times to 1 of Horizontal Distance

Autographed by J. B. Havel, at the Surveyor General's Office, Ottawa.

SURVEYS CARRIED OUT with the CO-OPERATION of the PROVINCIAL GOVERNMENT of BRITISH COLUMBIA

The Hon. JOHN ROBSON Minister of Mines,

1885-6

NOT TO BE TAKEN FROM LIBRARY
NE PAS SORTIR DE LA BIBLIOTHÈQUE

To illustrate Report of A. Bowman.

Map 281