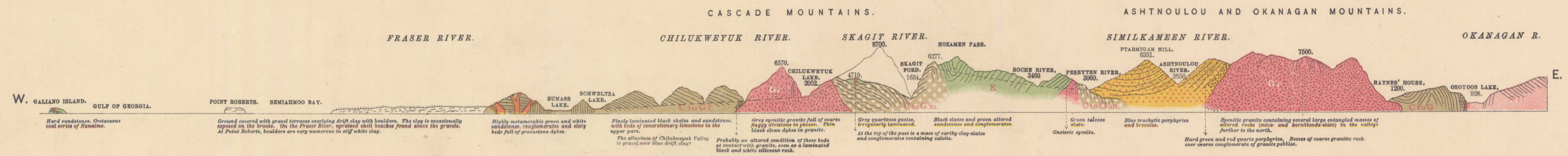


SECTION FROM FORT HOPE, FRASER RIVER, TO WATERTON, OR CHIEF MOUNTAIN LAKE, ON THE BUFFALO PLAINS.  
Constructed from observations made on the Brigade trails from Fort Hope to Colville, from Colville to the Kootanie Post and the South Kootanie Pass of the Rocky Mountains. Projected into an East and West Line.  
Horizontal Scale, 10 miles to an Inch. Vertical Scale, 10,000 feet to an Inch. Heights expressed in feet above the sea level. Broken lines represent water-courses.

NOTE.—The outlines of these sections and descriptive notes are those of Mr. Baerman's MS. The colours indicating age of rocks embody information since obtained by the Geological Survey.



SECTION FROM POINT ROBERTS, ON THE GULF OF GEORGIA, TO OSOYOOS LAKE.  
SKETCH SECTIONS ACCOMPANYING REPORT BY H. BAUERMAN, ESQ., F. G. S.

THE BURLING LITHOGRAPHIC CO. MONTREAL

NOT TO BE TAKEN FROM LIBRARY  
NE PAS SORTIR DE LA BIBLIOTHÈQUE

Boundary  
5.1.2  
A.P.D