

LEGEND

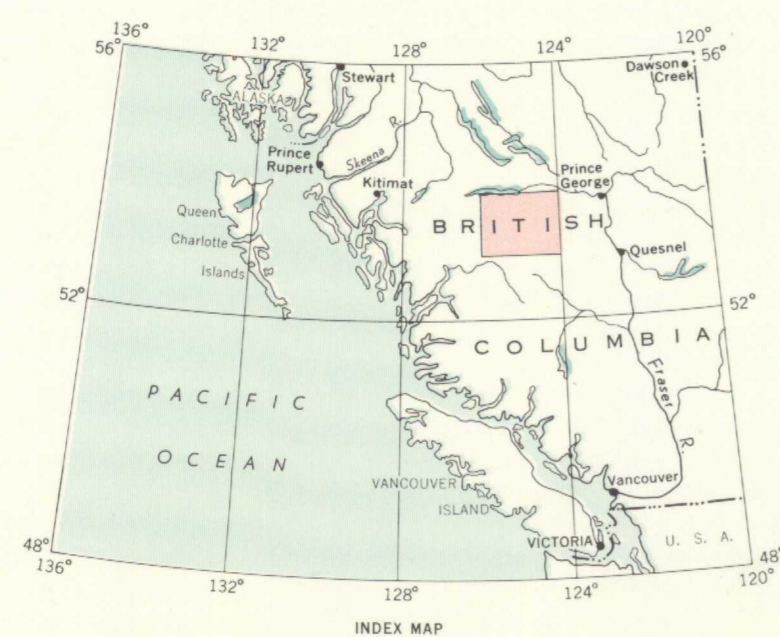
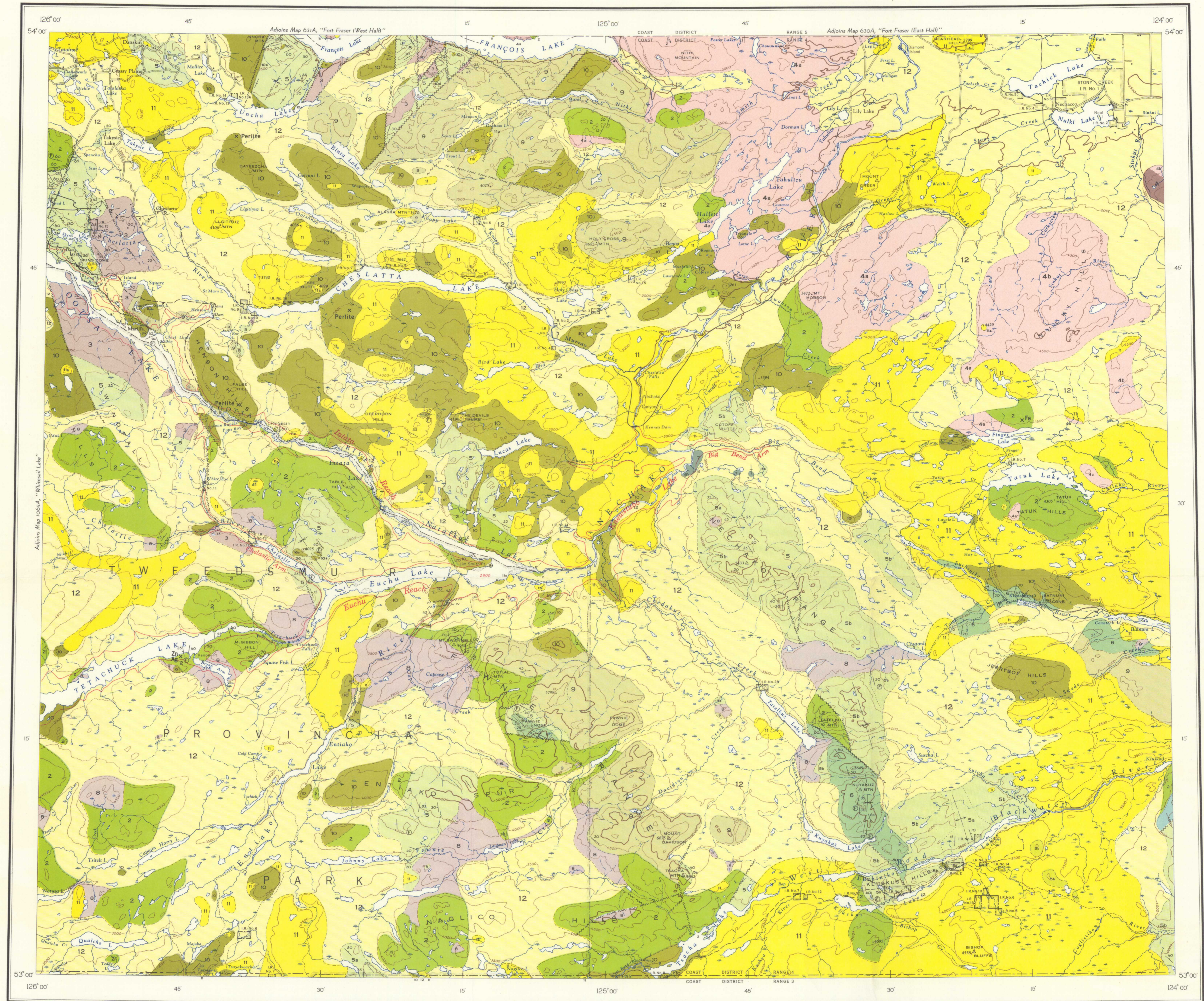
- QUATERNARY**  
PLEISTOCENE AND RECENT
- 12 Till, gravel, sand, clay, and silt
- TERTIARY**  
MIOCENE AND (?) LATER  
ENDAKO GROUP
- 11 Vesicular and amygdaloidal andesite and basalt; flow breccia, tuff, conglomerate, greywacke, and lignite; 11a, necks, plugs and dykes
- PALEOCENE (?) EOCENE, AND OLIGOCENE  
OOTS LAKE GROUP (in part)
- 10 Rhyolite, dacite, and associated tuffs and breccias; minor andesite, basalt, and conglomerate; 10a, rhyolitic and dacitic dykes, necks, and stocks
- CRETACEOUS AND (?) TERTIARY**  
UPPER CRETACEOUS AND (?) PALEOCENE  
OOTS LAKE GROUP (in part)
- 9 Basalt, andesite, and related tuffs and breccias; minor rhyolite and dacite; 9a, conglomerate and greywacke
- JURASSIC AND/OR CRETACEOUS**  
UPPER JURASSIC AND/OR CRETACEOUS
- 8 Granite, quartz diorite, granodiorite, and diorite
- JURASSIC**  
UPPER JURASSIC
- 7 Argillite and argillaceous limestone
- MIDDLE JURASSIC**  
HAZELTON GROUP (in part)
- 6 Greywacke, argillite, conglomerate, tuff, breccia, andesite, and arkose; minor rhyolite
- MIDDLE AND (?) LOWER JURASSIC**  
HAZELTON GROUP (in part)
- 5 Andesite, related tuffs and breccias, chert pebble conglomerate, shale, and sandstone; 5a, mainly volcanic rocks; 5b, mainly sedimentary rocks
- LOWER JURASSIC**  
TOPLEY INTRUSIONS
- 4 4a, granite and granodiorite; 4b, diorite and quartz diorite
- TRIASSIC AND JURASSIC**  
UPPER TRIASSIC AND LOWER JURASSIC  
TAKLA GROUP (2,3)
- 3 Red and brown shale, conglomerate, and greywacke
- 2 Andesitic and basaltic flows, tuffs, and breccias; interbedded argillite and minor limestone
- PENNSYLVANIAN (?) AND PERMIAN**  
CACHE CREEK GROUP
- 1 Limestone
- A Serpentinized peridotite. Probably Mesozoic

- Bedding, tops not indicated (inclined, vertical) ..... / /
- Fault (defined, approximate, assumed) ..... - - - - -
- Anticline ..... ~ ~ ~ ~ ~
- Syncline ..... ~ ~ ~ ~ ~
- Fossil locality ..... ⊙
- Mineral occurrence ..... x Fe

- MINERAL OCCURRENCES**
- Iron ..... Fe Silver ..... Ag  
Perlite ..... Perlite Zinc ..... Zn

Geology by H. W. Tipper, 1949-1953  
To accompany G. S. C. Memoir 324 by H. W. Tipper  
Cartography by the Geological Survey of Canada, 1962

Mean magnetic declination, 26° 15' East decreasing 3.5' annually. Readings vary from 25° 47' in the SE corner to 26° 40' in the NW corner of the map area



MAP 1131A  
GEOLOGY  
**NECHAKO RIVER**  
BRITISH COLUMBIA

Scale: One Inch to Four Miles =  $\frac{1}{253,440}$   
Miles

COPIES OF THIS MAP MAY BE OBTAINED FROM THE DIRECTOR, GEOLOGICAL SURVEY OF CANADA, OTTAWA

- Road, all weather ..... = = = = =
- Road, dry weather ..... = = = = =
- Cart track ..... - - - - -
- Trail ..... - - - - -
- Building ..... □
- Church ..... ☩
- School ..... ☩
- Post Office ..... ☩
- Horizontal control point ..... ⊕
- District boundary ..... - - - - -
- Park and Indian Reserve boundary ..... - - - - -
- Present shoreline above Kenney Dam ..... - - - - -
- Stream (intermittent) ..... ~ ~ ~ ~ ~
- Falls and rapids ..... ~ ~ ~ ~ ~
- Marsh or swamp ..... ~ ~ ~ ~ ~
- Sand or gravel ..... ~ ~ ~ ~ ~
- Contours (interval 500 feet) ..... ~ ~ ~ ~ ~
- Height in feet above mean sea-level ..... 2800, 1649

NOT TO BE TAKEN FROM LIBRARY  
NE PAS SORTIR DE LA BIBLIOTHÈQUE  
MAP LIBRARY / CARTOTHEQUE