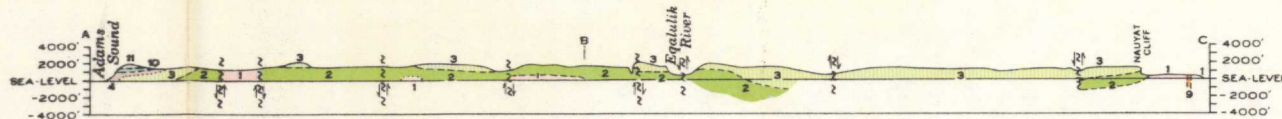




GEOLOGICAL SURVEY OF CANADA
DEPARTMENT OF MINES AND TECHNICAL SURVEYS



Section along line A-B-C

SHEETS 47 and 48 (Parts of)

LEGEND

- | | | | |
|------------------------------|----|---|---|
| PALÆOZOIC | 13 | ADMIRALTY GROUP (10-13)
BAILLARGE FORMATION:
blue-grey limestone | PALÆOZOIC (undivided)
14 Grey limestone,
buff sandstone |
| | 12 | SHIP POINT FORMATION:
grey, grey-brown, pale brown,
silty dolomite | |
| | 11 | TURNER CLIFFS FORMATION:
white sandstone, siltstone, mudstone,
pale grey shale | |
| | 10 | GALLERY FORMATION: red,
purple-grey, and white sandstone | |
| PROTEROZOIC AND/OR PALÆOZOIC | 9 | Gabbro dykes | |
| | 8 | ULUKSAN GROUP (4-8)
ELWIN FORMATION:
sandstone, siltstone, shale | |
| | 7 | STRATHCONA SOUND FORMATION:
reddish mudstone and siltstone | |
| | 6 | VICTOR BAY FORMATION:
dark to pale grey dolomite, edgewise
conglomerate, minor dark grey limestone
and black mudstone | |
| | 5 | SOCIETY CLIFFS FORMATION:
grey dolomite | |
| | 4 | ARCTIC BAY FORMATION:
black shale, in places pyritiferous | |
| | 3 | EQUALUK GROUP (2,3)
QUARTZITE MEMBER:
silica cemented quartzite | |
| | 2 | VOLCANIC MEMBER: andesite
and basalt, in part amygdaloidal, tuffs | |
| ARCHEAN | 1 | Biotite-garnet gneiss, granitic gneiss,
mixed biotite and garnet gneiss;
granitic and pegmatitic dykes | |

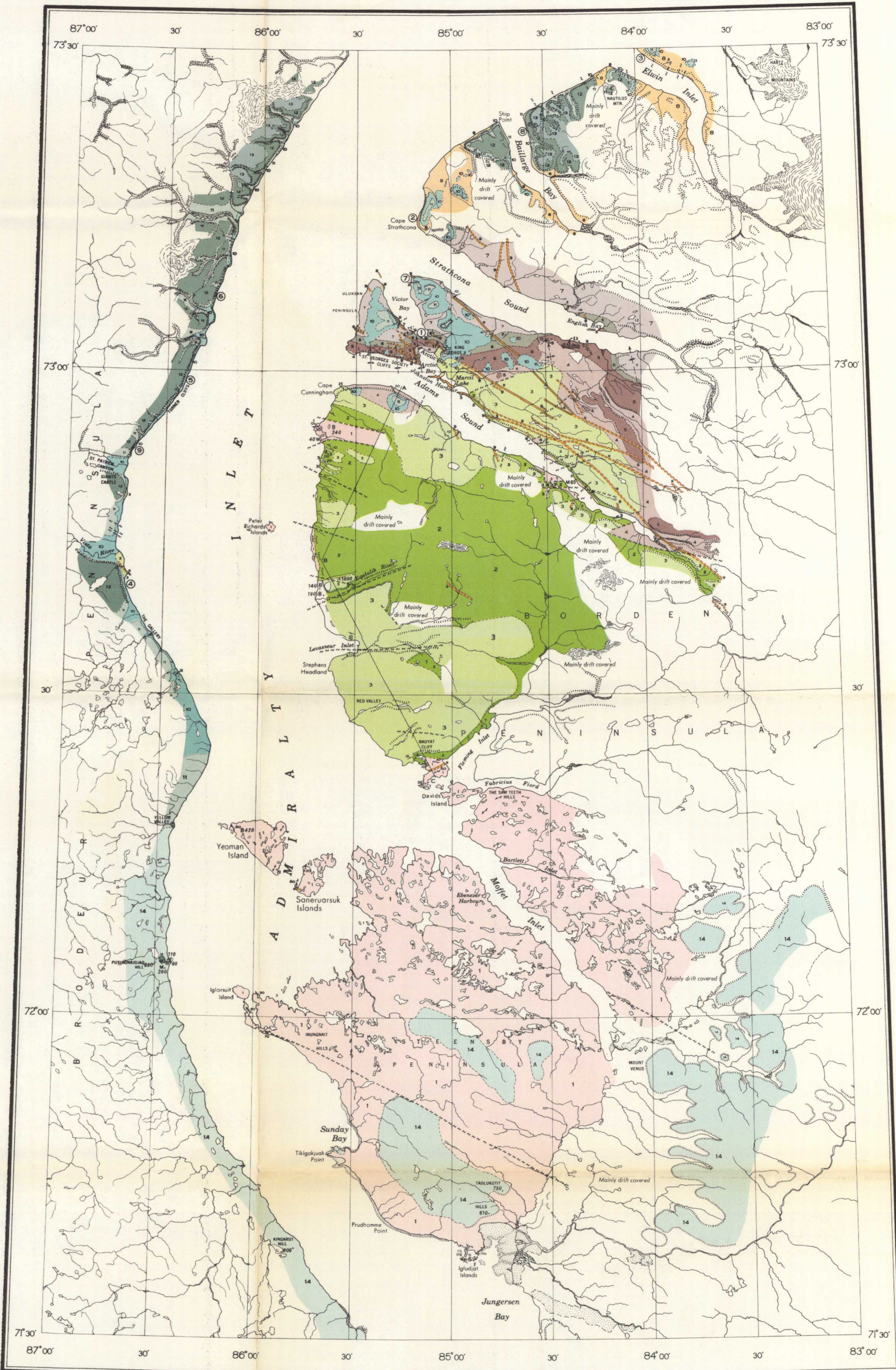
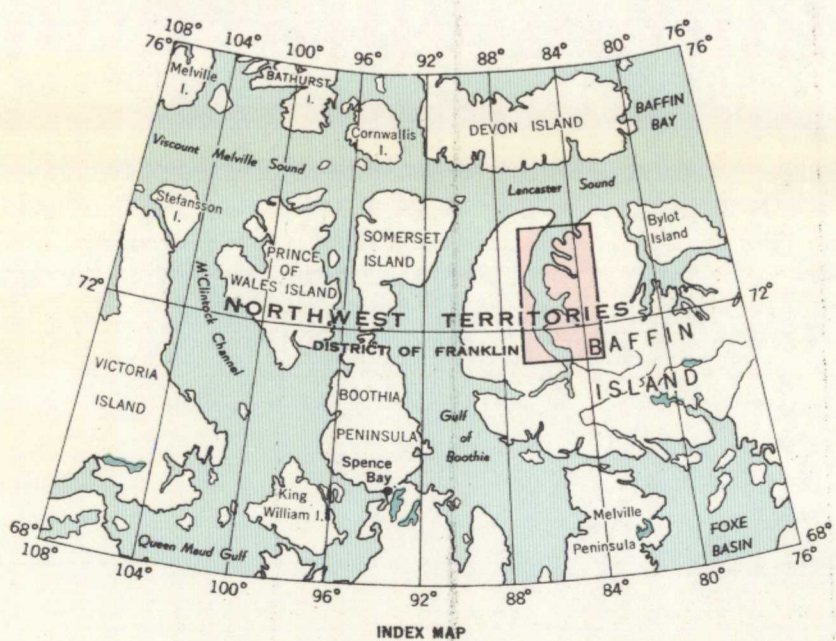
- Bedding (inclined, vertical)
- Bedding (upper side of bed faces as indicated)
- Schistosity, gneissosity (inclined, vertical, dip unknown)
- Fault (approximate, assumed)
- Anticline (approximate, arrow indicates direction of plunge)
- Syncline (approximate, arrow indicates direction of plunge)
- Glacial striae (direction of ice-movement unknown)
- Fossil locality
- Marine shell locality (elevation in feet)
- Raised beach (elevation in feet)
- Mineral localities
- Location of detailed sections discussed in text

Geology by R. R. H. Lemon and R. G. Blackadar, 1954

To accompany G.S.C. Memoir 328 by R. R. H. Lemon and R. G. Blackadar

- Tidal flat, sand or mud
- Cliff
- Glacier
- Braided stream
- Height in feet above mean sea-level

Cartography by the Geological Survey of Canada, 1962



PUBLISHED, 1963
COPIES OF THIS MAP MAY BE OBTAINED FROM THE
DIRECTOR, GEOLOGICAL SURVEY OF CANADA, OTTAWA

PRINTED BY THE SURVEYS AND MAPPING BRANCH

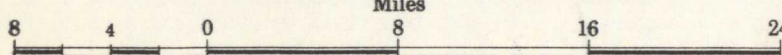
MAP 1133A

GEOLOGY

ADMIRALTY INLET

BAFFIN ISLAND
DISTRICT OF FRANKLIN

Scale: One Inch to Eight Miles = $\frac{1}{506,880}$



NOT TO BE TAKEN FROM LIBRARY
NE PAS SORTIR DE LA BIBLIOTHÈQUE



1133A