

LEGEND

Note: map-units 4-6, 10-12, 15-17- age and stratigraphic position known. Map-units A, B, 1-3, 7-9, 13, 14- age not known, stratigraphic position assumed. Where map-unit numbers underlined on map, geology inferred.

- PLEISTOCENE AND RECENT**
- 17 Glacial ice and shell ice
 - 16 Glacial fill, sand, gravel, talus, soil; 16a, boulder gravel hills; 16b, lacustrine sands and silts; 16c, marine silts
- CENOZOIC**
- TIERTARY**
- PALEOCENE TO MIOCENE**
- 15 15A Shale, sandstone, coal (Lake Hazen); Paleocene to Oligocene
 - 15B Shale, sandstone, coal (Watercourse Valley); Paleocene or Eocene
 - 15C Sand, boulder beds, lignite, Miocene
- CRETACEOUS OR TERTIARY**
- 14 14A Beds exposed on Daly River; sandstone, shale
 - 14B Brainerd's Petrified Forest beds; sandstone, shale
- JURASSIC AND CRETACEOUS**
- UPPERMOST JURASSIC OR (1) LOWER CRETACEOUS**
- 12 Sandstone, shale
- TRIASSIC (?)**
- 11 Sandstone, shale, coal
- PERMIAN TO JURA-CRETACEOUS**
- 13 Undivided
- CARBONIFEROUS AND PERMIAN**
- 10 10A Limestone, sandstone, conglomerate, Upper Carboniferous and Lower Permian of the United States Range
 - 10B Limestone, shale, quartzite, gypsum, limestone breccia, Mississippian, Pennsylvanian, and Permian of Clements Markham River
 - 10C DANA BAY GROUP, (Feilden Peninsula) limestone, shaly limestone, Permian
 - 10D GUIDE HILL GROUP, (Feilden Peninsula) sandstone, conglomerate, shale, limestone, Pennsylvanian or Permian
 - 10E FEILDEN GROUP, (Feilden Peninsula) limestone, sandstone, conglomerate, Permian
 - 10F Limestone, sandstone, conglomerate, Pennsylvanian and Permian of north coastal Ellesmere Island
 - 10G Sandstone, shale, limestone (Lake Hazen), Lower Permian
- PERMIAN OR EARLIER**
- VIEW CREEK GROUP**
- 9 Sandstone, quartzite, greywacke, slate, conglomerate, limestone
- SAIL HARBOUR GROUP**
- 8 Shale, slate, shaly limestone
- SILURIAN (?)**
- 7 Archer Fiord Terrane; argillite, slate, limestone, quartzite, chert
- SILURIAN**
- CAPE RAWSON GROUP**
- 6 Greywacke, impure sandstone, sandstone, slate, phyllite, impure limestone, gypsum; 6a, limestone bed; 6b, cherty or other resistant bed
- ORDOVICIAN**
- MIDDLE AND UPPER ORDOVICIAN**
- CHALLENGER GROUP**
- 5 Limestone, sandstone, conglomerate, slate, basic volcanic rock
 - 4 Daly River Terrane; limestone, sandstone, quartzite
- PRECAMBRIAN OR PALAEOZOIC**
- ORDOVICIAN OR EARLIER**
- PROBABLY MIDDLE ORDOVICIAN OR EARLIER**
- M-CLINTOCK GROUP**
- 3a Andesitic and basaltic lava, breccias, tuffs, greywacke, arkosic sandstone, slate, 3a, crystalline limestone
- PROBABLY PRE-MIDDLE ORDOVICIAN**
- MOUNT DISRAELI GROUP**
- 2 Calcareous slate, phyllite, limestone, shaly limestone, calcarenite, granule conglomerate, quartzite, marble
- CAPE COLUMBIA GROUP**
- 1 Biotite gneiss, garnet-biotite gneiss, augen gneiss, chlorite-feldspar schist, amphibole-mica-feldspar gneiss, quartzite

- INTRUSIVE ROCKS**
- PERMO-CARBONIFEROUS AND/OR LATER, IN PART CRETACEOUS (?)**
- A Basalt, diabase
- PERMO-CARBONIFEROUS OR EARLIER**
- B Syenite, in part foliated

- Outcrop of basalt or diabase
- Mesa or cuesta-form exposure of basalt
- Bedding, measured (horizontal, inclined, vertical)
- Bedding, estimated (dip gentle, moderate, steep)
- Foliation (inclined)
- Structural trend; trace of bedding
- Lineament (from air photograph)
- Fault (defined, assumed)
- Anticline
- Syncline
- Fossil locality
- Microfossil locality: Pollen, spores
- Coal
- Mineral occurrence (gypsum)
- Marine shells; elevation in feet

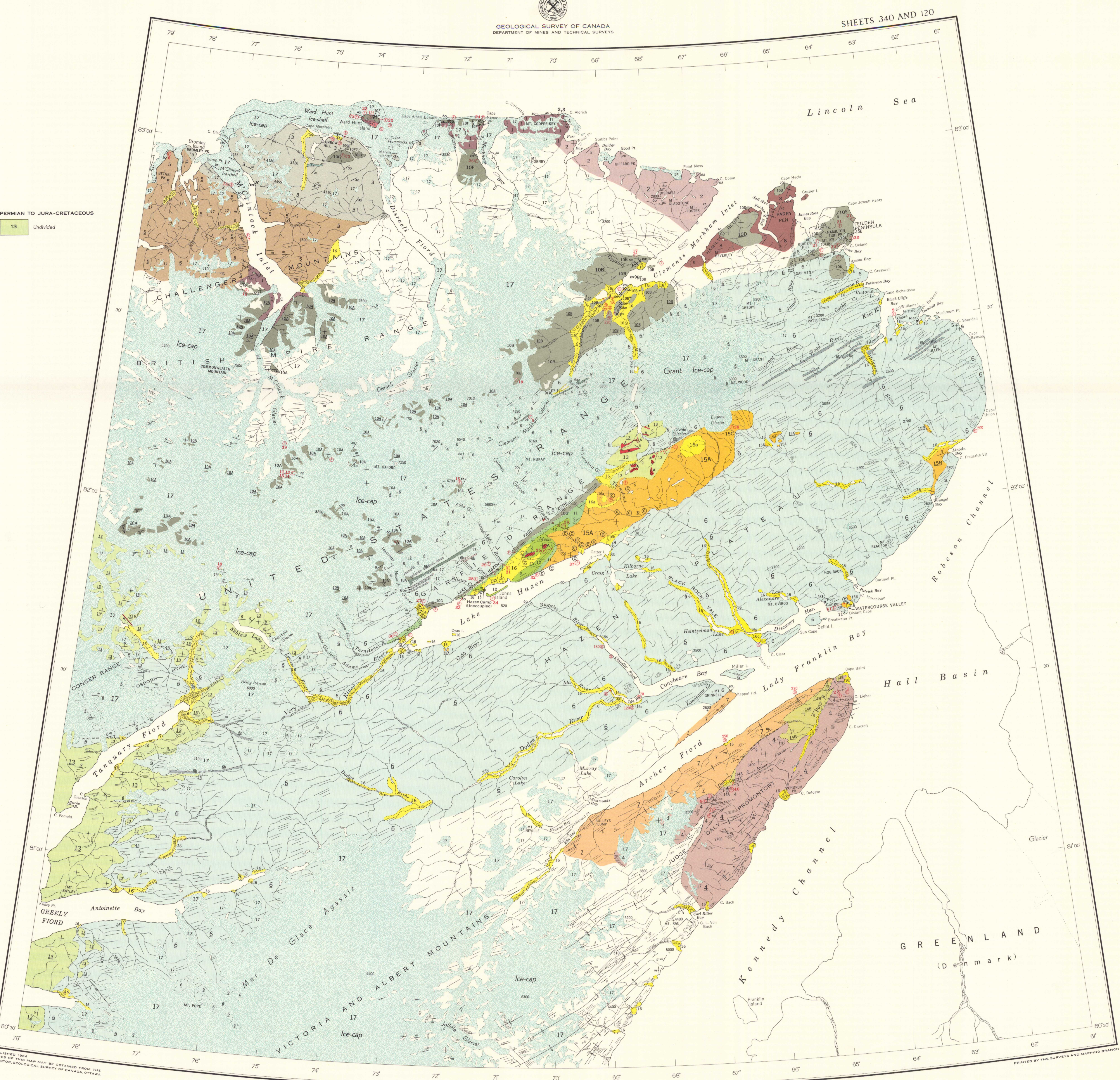
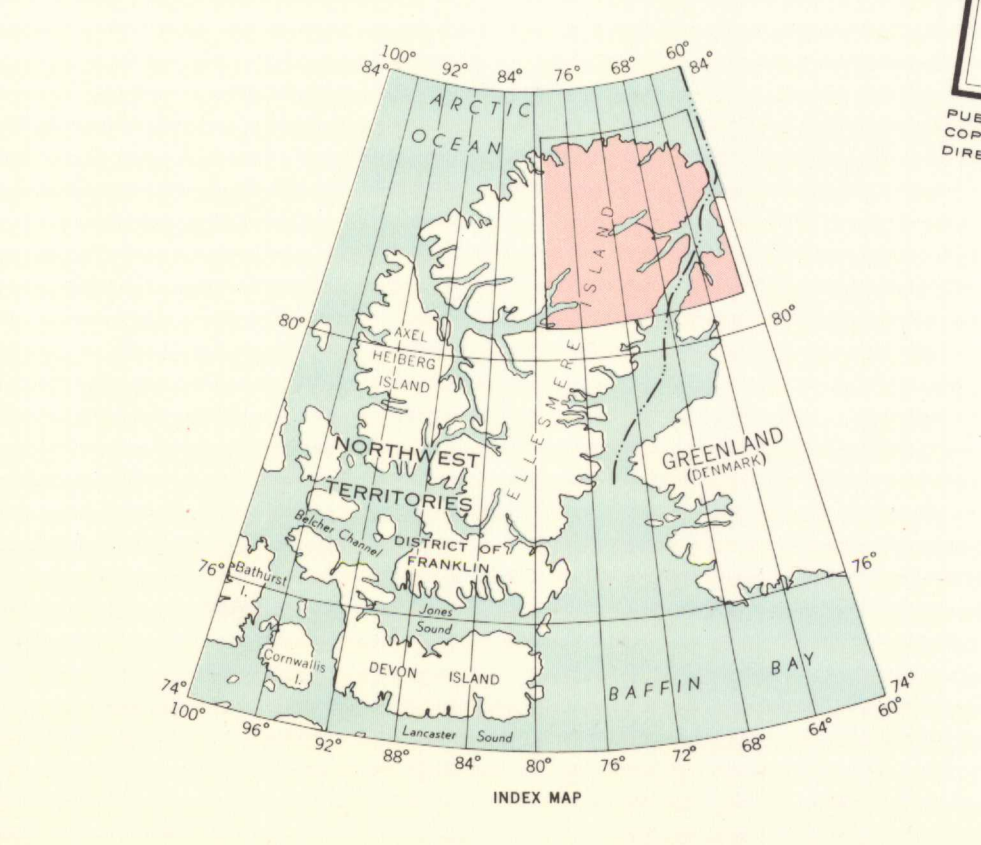
Geology by V.K. Peat, 1950, R.G. Blackadar, 1953, R.L. Christie, 1954, 1957, 1959

To accompany G.S.C. Memoir 331 by R.L. Christie

- Building
- Historic site or cairn
- Height in feet above mean sea-level

Cartography by the Geological Survey of Canada, 1963

- HISTORIC SITES**
- McMillan cache, 1909
 - Peary signpost, 1909
 - Hansen cache, 1920
 - McMillan tide-gauge, 1909
 - Caim, Peary winter quarters (Roosevelt), 1905-06
 - Caim, Nares winter quarters (Alert), 1875-76
 - Caim, Greely, 1882
 - Esimo winter house, Peary, 1905-06
 - Camp site, Greely, 1882
 - Caim, Nares winter quarters, (Discovery), 1875-76, also site of Fort Conger, Greely winter quarters, 1881-83
 - Caim, Nares, 1875-76



NORTHEASTERN ELLESMERE ISLAND
DISTRICT OF FRANKLIN

Scale: One Inch to Eight Miles = 1/806,880
Miles 0 4 8 16 32

G 3401-C5
1910-
54
OmmC

NOT TO BE TAKEN FROM LIBRARY
NE PAS SORTIR DE LA BIBLIOTHEQUE

